

NORTH AMERICAN ENERGY STANDARDS BOARD
Executive Committee Meeting - WEQ, REQ, RGQ, WGQ Meeting Materials
August 24-26, 2004

North American Energy Standards Board

Executive Committee Meeting

Wholesale Electric Quadrant
Retail Gas Quadrant
Retail Electric Quadrant
Wholesale Gas Quadrant

August 24-26, 2004

Hosted by El Paso Western Pipelines
Colorado Springs, Colorado

NORTH AMERICAN ENERGY STANDARDS BOARD

Executive Committee Meeting – WEQ, REQ, RGQ, WGQ Meeting Materials

August 24-26, 2004

Table Of Contents

General Materials Applicable to Multiple Quadrants

	Description of Materials
Tab 1.	Welcome & Opening Remarks <ul style="list-style-type: none">• EC Members and Terms• Schedule of 2004 Meetings
Tab 2.	Agendas
Tab 3.	Executive Committee Draft Minutes: May 4-6, 2004
Tab 4.	Triage Report and Results
Tab 5.	NAESB GECTF Report
Tab 6.	Gas Quality Proposed Standards - Update
Tab 7.	DUNs Number Usage

Wholesale Electric Quadrant Materials

Tab 8.	2004 Annual Plan for WEQ
Tab 9.	WEQ Subcommittee Updates
Tab 10.	Level 0 Progress Report
Tab 11.	Standards Numbering

Retail Electric and Retail Gas Quadrants Materials

Tab 12.	2004 Annual Plans for REQ and RGQ
Tab 13.	Retail Subcommittee Updates
Tab 14.	Proposed Standards – Market Participants Interactions and Non-disclosure Agreement
Tab 15.	REQ Proposed Amendments to Quadrant Procedures and Comments

Wholesale Gas Quadrant Materials

Tab 16.	2004 Annual Plan for WGQ
Tab 17.	Subcommittee Updates
Tab 18.	Proposed Standards – Producer Imbalance Statement
Tab 19.	Minor Corrections

NORTH AMERICAN ENERGY STANDARDS BOARD
Executive Committee Meeting - WEQ, REQ, RGQ, WGQ Meeting Materials
August 24-26, 2004

TAB 16

Wholesale Gas Quadrant 2004 Annual Plan

North American Energy Standards Board

1301 Fannin, Suite 2350, Houston, Texas 77002
Phone: (713) 356-0060, Fax: (713) 356-0067, E-mail: naesb@naesb.org
Home Page: www.naesb.org

NORTH AMERICAN ENERGY STANDARDS BOARD

2004 WGQ Annual Plan Revised by the Executive Committee – May 6, 2004

Item Description	Completion ¹	Assignment
Gas-Electric Scheduling Activities		
1 Status Report on Gas-Electric scheduling coordination issues.	2 nd Qtr 2004	Gas-Electric Coordination TF
Standards Implementation		
2 Review and develop necessary standards for FERC Order 2004 (Affiliate Order).	2 nd Qtr 2004	Business Practices Subcommittee
Status: Complete		
Electronic Delivery Mechanisms and Related Activities		
3 Preparation of documents and submission of EDM standards to ANSI for approval as ANSI standards.	3 rd Qtr 2004	EDM Subcommittee
4 Explore additional possibilities for partnership with the Department of Energy. Sandia Review of security and reliability of version 1.7.	3 rd Qtr 2004	EC Officers
Status: Pending, Discussion Underway		
5 Review and enhance security standards as required by technological changes. Review security standards as may be deemed necessary, e.g. Public Key Infrastructure (PKI).	4 th Qtr 2004	EDM Subcommittee
Status:		
6 Review of minimum technical characteristics in Appendices C, D, and E of the EDM Manual.	4 th Qtr 2004	EDM Subcommittee
Status:		
7 Prepare a common NAESB Electronic Transport (ET) and WGQ Quadrant Electronic Delivery Mechanism (WGQ QEDM) manuals using the version 1.6 NAESB WGQ EDM tab 6 and applicable 4.x.x standards as a base.	2 nd Qtr 2004	EDM Subcommittee
Status: Pending, Discussion Underway		

¹ Dates in the completion column are by end of the quarter for completion by the assigned committee. The dates do not necessarily mean that the standards are fully staffed so as to be implementable by the industry, and/or ratified by membership. If one item is completed earlier than planned, another item can begin earlier and possibly complete earlier than planned. There are no begin dates on the plan.

North American Energy Standards Board

1301 Fannin, Suite 2350, Houston, Texas 77002
Phone: (713) 356-0060, Fax: (713) 356-0067, E-mail: naesb@naesb.org
Home Page: www.naesb.org

Gas Quality Activities

8	Establish web-based reports for tracking all physical and chemical properties of natural gas defined in pipeline tariffs (R03035, Item A)	4 th Qtr. 2004	Business Practices Subcommittee
---	---	------------------------------	---------------------------------

Provisional Activities²

Subsequent FERC orders – Docket No. RM 96-1 (Creditworthiness)

Review of ISDA Gas Annex.

Program of Standards Maintenance & Fully Staffed Standards Work³

Business Practice Requests	Ongoing	Assigned by the EC on a request by request basis
Continue review against plan for migration to ANSI ASC X12 new versions as needed and coordinate such activities with DISA.	Ongoing	ANSI (X12) Subcommittee
Information Requirements and Technical Mapping of Business Practices	Ongoing	Assigned by the EC on a request by request basis
Ongoing Interpretations for Clarifying Language Ambiguities	Ongoing	Assigned by the EC on a request by request basis
Ongoing Maintenance of Code Values and Other Technical Matters	Ongoing	Assigned by the EC on a request by request basis

- Notes: (a) Priority is given to action items that are carry-overs from the 2003 Annual Plan.
(b) Any new activity should be preceded by a request from the submitter after which the annual plan will be revisited. The provisional items would only be addressed after a request is submitted or an order is issued by the FERC.

² To the extent that it is determined that any of the provisional activities should be worked upon during the year as a result of a specific request for standards development or a FERC action, the Board has the discretion to modify the annual plan. Additionally, provisional activities will remain on the Annual Plan for one year pending the filing of a formal request or a decision to add them to the plan as active items.

³ This work is considered routine maintenance and thus the items are not separately numbered.

NORTH AMERICAN ENERGY STANDARDS BOARD
Executive Committee Meeting - WEQ, REQ, RGQ, WGQ Meeting Materials
August 24-26, 2004

TAB 17

Subcommittee Updates

NORTH AMERICAN ENERGY STANDARDS BOARD
Executive Committee Meeting - WEQ, REQ, RGQ, WGQ Meeting Materials
August 24-26, 2004

Business Practices Subcommittee

North American Energy Standards Board

1301 Fannin, Suite 2350, Houston, Texas 77002
Phone: (713) 356-0060, Fax: (713) 356-0067, E-mail: naesb@aol.com
Home Page: www.naesb.org

TO: Posting for Interested Industry Participants
FROM: BPS Chairs (Tina Burnett, Sheri Heslington, Mike Novak, Keith Sappenfield, Kim Van Pelt)
Rae McQuade, Executive Director
RE: Draft Agenda for the WGQ Business Practices Subcommittee - September 1-2, 2004
DATE: August 9, 2004

NORTH AMERICAN ENERGY STANDARDS BOARD WHOLESALE GAS QUADRANT BUSINESS PRACTICES SUBCOMMITTEE

**Wednesday, September 1, 2004
9:00a.m. – 4:00p.m. Mountain
Thursday, September 2, 2004
8:00a.m. – 3:00p.m. Mountain**

**Kern River Gas Transmission
2733 East Cottonwood Parkway Suite 300
Salt Lake City UT 84121
801-584-6648**

DRAFT AGENDA

Please call the NAESB office (713-356-0060) for the phone number, conference leader, and pass code

- 1. Administrative:**
 - Welcome, Antitrust,**
 - Attendee Roll Call,**
 - Adoption of Agenda,**
 - Adoption of 05/13/2004 Draft Meeting Minutes**
 - Adoption of 08/11/2004 Draft Meeting Minutes**

- 2. Review Information Requirement's Subcommittee Questions for Discussion and Possible Vote (see memos posted on bottom of BPS web page):**

- 3. Review of the following Business Practices Requests:**

R03036	KeySpan	Discussion only
R04008	Natural Gas Pipeline	Discussion only
R04010	Natural Gas Pipeline	Discussion only
R04014	Northern Natural Gas	Discussion only

- 4. Next Meeting(s) and Agenda**

9/30/2004	Conference Call	Tentative
10/14-15/2004	Face-to-Face Meeting	National Fuel, Buffalo, NY

- 5. Adjourn**

NORTH AMERICAN ENERGY STANDARDS BOARD
Executive Committee Meeting - WEQ, REQ, RGQ, WGQ Meeting Materials
August 24-26, 2004

Information Requirements Subcommittee

**Information Requirements Workpaper
R98037 – 8/25/04**

The purpose of this workpaper is to (1) propose a modification to the question to BPS and (2) propose a pictorial example of the difference between the BPS instructions and the IR proposal.

The question to BPS that IR adopted at its July 2004 meeting reads:

At its meeting on July 14, 2004, the Information Requirements (IR) subcommittee discussed request **R98037**. This request involves the Offer Upload / Download and Bid Upload / Download data sets, the existing Not Stand Alone Offer / Bid Terms and Conditions data elements and new "machine processable" data elements that tie the offers / bids together.

The instruction from BPS (2/13/00) says:

Instruct IR to add a conditional data element to the Offer Upload and Offer Download.

This "machine processable" data element should be used to tie the various offers together in the case where an offer is not a "stand alone offer" on that Transportation Service Provider.

In the Offer Upload, the Not a Stand Alone Offer Terms and Conditions usage would be Sender's Option (SO), however it would only be used when the "Stand Alone Offer Indicator" indicates the offer is not stand alone. From a business point of view, if such Not A Stand Alone Offer Terms and Conditions exist, they should be present in the Not a Stand Alone Offer Terms and Conditions data element. In the Offer Download, the usage would be Conditional, mandatory if provided in the original offer.

Instruct IR to add a conditional data element to the Bid Upload and Bid Download. This "machine processable" data element should be used to tie the various bids together in the case where a bid is not a "stand alone bid" on that Transportation Service Provider.

In the Bid Upload, the Not a Stand Alone Bid Terms and Conditions usage would be Sender's Option (SO), however it would only be used when the "Stand Alone Bid Indicator" indicates the bid is not stand alone. From a business point of view, if such Not A Stand Alone Bid Terms and Conditions exist, they should be present in the Not a Stand Alone Bid Terms and Conditions data element. In the Bid Download, the usage would be Conditional, mandatory if provided in the original bid.

It is unclear what the condition is supposed to be on the new 'conditional data element(s)'. IR has determined that the best implementation would be to add new data elements that are a 'package identifier' type of data element and would like BPS to consider the following:

The new package identifier be made business conditional and then make the Not Stand Alone Offer / Bid Terms and Conditions data element conditional with a multi-part condition. The first part of the condition would be that it is mandatory if (1) the Not Stand Alone Offer / Bid Indicator is 'no' and (2) the package identifier is not sent. The second part of the condition would be that it is sender's option if (1) the Not Stand Alone Offer / Bid Indicator is 'no' and (2) the package identifier is sent.

Proposed modification to the question to BPS:

At its meeting on July 14, 2004, the Information Requirements (IR) subcommittee discussed request **R98037**. This request involves the Offer Upload / Download and Bid Upload / Download data sets, the existing Not Stand Alone Offer / Bid Terms and Conditions data elements and new "machine processable" data elements that tie the offers / bids together.

The instruction from BPS (2/13/00) says:

Instruct IR to add a conditional data element to the Offer Upload and Offer Download.

This "machine processable" data element should be used to tie the various offers

together in the case where an offer is not a "stand alone offer" on that Transportation Service Provider.

In the Offer Upload, the Not a Stand Alone Offer Terms and Conditions usage would be Sender's Option (SO), however it would only be used when the "Stand Alone Offer Indicator" indicates the offer is not stand alone. From a business point of view, if such Not A Stand Alone Offer Terms and Conditions exist, they should be present in the Not a Stand Alone Offer Terms and Conditions data element. In the Offer Download, the usage would be Conditional, mandatory if provided in the original offer.

Instruct IR to add a conditional data element to the Bid Upload and Bid Download. This "machine processable" data element should be used to tie the various bids together in the case where a bid is not a "stand alone bid" on that Transportation Service Provider.

In the Bid Upload, the Not a Stand Alone Bid Terms and Conditions usage would be Sender's Option (SO), however it would only be used when the "Stand Alone Bid Indicator" indicates the bid is not stand alone. From a business point of view, if such Not A Stand Alone Bid Terms and Conditions exist, they should be present in the Not a Stand Alone Bid Terms and Conditions data element. In the Bid Download, the usage would be Conditional, mandatory if provided in the original bid.

It is unclear what the condition is supposed to be on the new 'conditional data element(s)'. IR has determined that the best implementation would be to add new data elements that are a 'package identifier' type of data element and would like BPS to consider the following:

The new offer / bid package identifier type data element would be made business conditional in the Offer / Bid Upload and then make the Not Stand Alone Offer / Bid Terms and Conditions data element in the same data sets conditional with a multi-part condition:

- The first part of the condition would be that ~~the Not Stand Alone Offer / Bid Terms and Conditions~~ is mandatory if ~~(1)(a)~~ the Not Stand Alone Offer / Bid Indicator is 'no' in the Offer / Bid Upload and ~~(2)(b)~~ the package identifier is not sent.
- The second part of the condition would be that ~~the Not Stand Alone Offer / Bid Terms and Conditions~~ is sender's option if ~~(1)(a)~~ the Not Stand Alone Offer / Bid Indicator is 'no' in the Offer / Bid Upload and ~~(2)(b)~~ the package identifier is sent.

Corresponding / similar changes would be incorporated in the Offer / Bid Download data sets.

Attached is a pictorial example, utilizing the Offer Upload, of the impact of the BPS' instruction as IR believes it is intended versus the proposal IR wants to make to BPS.

Documents impacted:

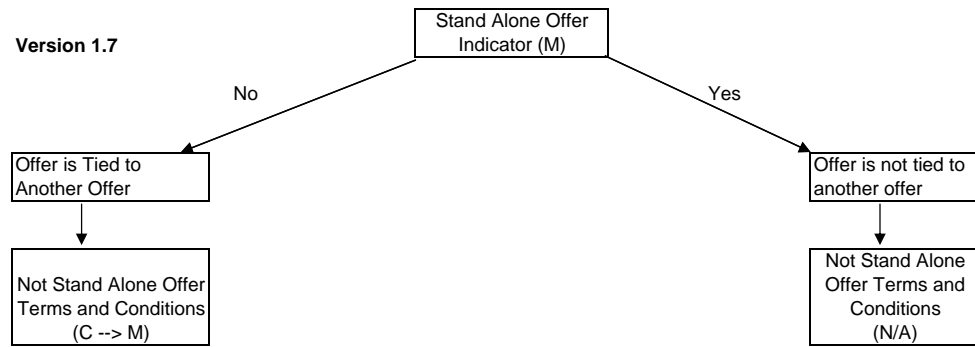
- 5.4.1 Offer Download** - data elements (Stand Alone Offer Indicator and Not Stand Alone Offer Terms & Conditions) and code values (Stand Alone Offer Indicator)
- 5.4.2 Bid Download** - data elements (Stand Alone Bid Indicator and Not Stand Alone Bid Terms & Conditions) and code values (Stand Alone Bid Indicator)
- 5.4.7 Offer Upload** - data elements (Stand Alone Offer Indicator and Not Stand Alone Offer Terms & Conditions) and code values (Stand Alone Offer Indicator)
- 5.4.8 Offer Upload Quick Response** - Validation Codes – Heading
- 5.4.9 Offer Upload Notification** - data elements (Stand Alone Offer Indicator and Not Stand Alone Offer Terms & Conditions) and code values (Stand Alone Offer Indicator)

5.4.18 Bid Upload - data elements (Stand Alone Bid Indicator and Not Stand Alone Bid Terms & Conditions) and code values (Stand Alone Bid Indicator)

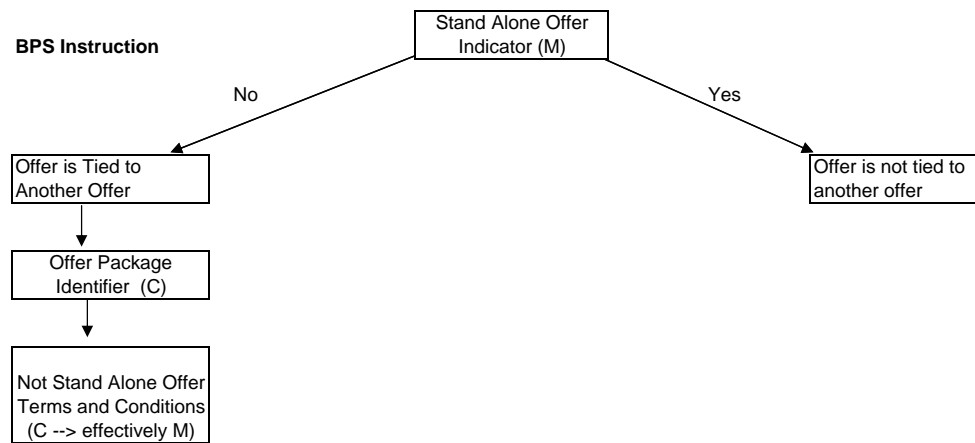
5.4.19 Bid Upload Quick Response - Validation Codes – Heading

Offer Upload 5.4.7

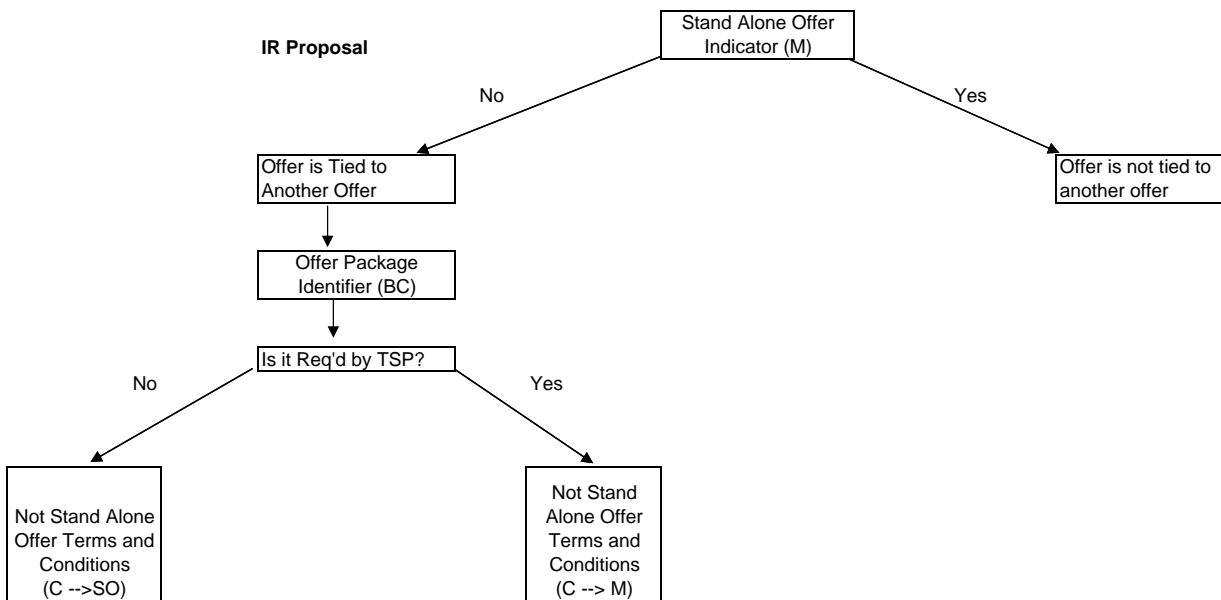
Version 1.7



BPS Instruction



IR Proposal



**IR Workpaper 08/25/04
R99033 and R96018**

This workpaper compiles the subcommittee's work to date on R98033 / R96018. While compiling this workpaper, it was discovered that the following item(s) need to be addressed before voting on the proposed motion below. Proposed modifications for these items are highlighted with yellow / shading:

- Modify the Capacity Release Related Standards Section of the Business Process and Practices to incorporate the standards adopted by the EC 2/10/00 and BPS' proposed standard from 2/3/00 (which may get modified).
- Levels for new data elements -

The implementation proposed is contingent on the successful processing of request R99013 – Pre-approved Bidders List .

MOTION

Adopt the attached workpaper as summarized below:

- Modify NAESB WGQ Capacity Release Manual to:
 - Add Proposed NAESB WGQ Standards No. - 5.3.x (S86), 5.3.x (S87), 5.3.y (S88) and 5.3.z (S89) (from R99033) and NAESB WGQ Standard 5.3.x (from R96018) in the Capacity Release Related Standards Section of the Business Process and Practices.
 - Modify NAESB WGQ Standard 5.4.13 – Operationally Available and Unsubscribed Capacity – Technical Implementation of Business Process, Sample Paper, Data Dictionary and Code Values Dictionary.
 - Modify NAESB WGQ Standard 5.4.14 – Upload of Request for Download of Posted Data Sets – Technical Implementation of Business Process and Code Values Dictionary.
 - Modify NAESB WGQ Standard 5.4.15 – Response to Upload of Request for Download of Posted Data Sets - Technical Implementation of Business Process and Code Values Dictionary.

TECHNICAL IMPLEMENTATION OF BUSINESS PROCESS

The Operationally Available and Unsubscribed Capacity datasets are reports from a transportation service provider to a data requester. ~~Either both~~ The operationally available and unsubscribed capacity reports can be requested together, or ~~either may be requested separately.~~

The operationally available capacity type of report contains information on **operating capacity**, **total scheduled quantity** and **operationally available capacity**. Operationally available capacity is ~~interruptible~~ capacity that is available for transportation by ~~from~~ the transportation service provider ~~for the time specified~~. The unsubscribed capacity type of report contains information on **unsubscribed capacity** that is *firm* capacity, also available from the transportation service provider, for which no party has contracted. The type of capacity being described is indicated by the **report type** field.

~~The dataset is essentially identical for the two types of capacity with one exception, which will be noted. The type of capacity being described, either operationally available or unsubscribed, is indicated by the **capacity type** field.~~

~~The **beginning data effective date**, and **beginning data effective time**, and **cycle indicator** indicate reflect the first gas day and nomination cycle for which the capacity is reported of either type is available. Unless the default of one day is used, the **data ending date** must be sent to indicate the ending date of the ~~available reported~~ capacity. If the ending date is sent, the **beginning data end time** may be sent to indicate the ending time of the ~~available reported~~ capacity. The date and time information ~~may apply~~ applies to all the **location(s)** specified, sent, or may be specified separately for different locations.~~

The transportation service provider is identified by its entity common code number. Parties should mutually agree to use the Transportation Service Provider's proprietary entity code when the D-U-N-S® Number is not available. The location(s) where capacity is available reported are identified by ~~their~~ its location common code. In addition, the **location name** and/or **location zone** may be specified. If a segment is defined by two locations as indicated in the **location purpose**, then two location data elements may be sent. Alternatively, if a segment is defined by a single location, then a single location data element may be sent.

~~The **quantity available** at the specified location(s) is included for both types of capacity. In the case where the report type indicates operational capacity of operationally available capacity only, where when the specified quantity operationally available capacity at the location is zero (i.e., no capacity is available), the **IT Indicator** is sent. This tells the receiver of the dataset whether some portion of the capacity being utilized at the specified location is interruptible, or conversely, that no portion of the capacity being utilized at the specified location is interruptible. Also, for this type of report, the **flow indicator** reflects the direction of flow for the quantity being reported.~~

~~As previously noted, with the exception of the IT indicator, the type of information sent for both types of capacity is identical. Thus, this description applies to either operationally available capacity, unsubscribed capacity, or both.~~

~~Refer to Transportation Service Provider's tariff which may require the use of Sender's Option data elements.~~

SAMPLE PAPER TRANSACTION

ABC PIPELINE Notification of Operationally Available Capacity Report Type: Operational Capacity

Transportation Service Provider: ABC Pipeline (808344672)
Posted: June 1, 1996 @ 11:20 AM

~~Terms of the Operationally Available Capacity~~

~~Availability Period Start~~Data Effective Date: June 2, 1996 @ 8:00 AM
~~Availability Period Data End~~ Date: June 3, 1996 @ 7:59 AM
~~Type of Capacity:~~ Interruptible

~~Operationally Available Capacity Locations~~

Receipt Locations	Quantity	IT Indicator
ABC Johnson Ditch	2000	N/A
ABC Pitt Creek	3250	N/A

Delivery Locations	Quantity	IT Indicator
Robinson Station	0	Yes

Location	Operating Capacity	Total Scheduled Capacity	Operationally Available Capacity	Flow Indicator	IT Indicator
ABC Johnson Ditch	2,000	1,300	700	Receipt	N/A
Young Hill	3,000	3,000	0	Receipt	No
ABC Pitt Creek	9,998	7,592	2,397	Delivery	N/A
Robinson Station	1,000	1,000	0	Delivery	Yes

ABC PIPELINE
Report Type: Unsubscribed Capacity

Transportation Service Provider: ABC Pipeline (808344672)
Posted: June 1, 1996 @ 11:20 AM

Data Effective Date: June 2, 1996 @ 8:00 AM
Data End Date: June 3, 1996 @ 7:59 AM

<u>Location</u>	<u>Unsubscribed Capacity</u>	<u>Flow Indicator</u>
Mike's Gully	1,000	Receipt
Chris Bay	2,000	Receipt
Tran Valley	9,000	Delivery
Micki Hill	1,000	Delivery

DATA DICTIONARY

Standard 5.4.13

Business Name (Abbreviation)	Definition	EBB Usage	EDI/FF Usage	Condition
Available Capacity Effective Date (Avail Cap Eff Date)	The beginning date for which capacity is available.	M	M	
Available Capacity Effective Time (Avail Cap Eff Time)	The beginning time for which capacity is available.	M	M	
Available Capacity End Date (Avail Cap End Date)	The ending date for which capacity is available.	M	M	Default is 1 day
Available Capacity End Time (Avail Cap End Time)	The ending time for which capacity is available.	SO	SO	
Capacity Type Data	A code indicating whether the capacity available is operational or unsubscribed.			
Capacity Type (Cap Type)		C	M	For EBB, at least one of Capacity Type or Capacity Type Description is required.
Capacity Type Description (Cap Type Desc)		C	NU	For EBB, at least one of Capacity Type or Capacity Type Description is required.
Cycle Indicator (Cycle)	Associates information to applicable nomination cycle.	C	C	Mandatory when Capacity Type is 'Operational Capacity Data'.
Comments and Notes (Comments)	Any special considerations or qualifications concerning the available capacity.	SO	SO	
Data Effective Date (Data Eff Date)	The beginning date for which the information is applicable.	M	M	
Data Effective Time (Data Eff Time)	The beginning time for which the information is applicable.	M	M	
Data End Date (Data End Date)	The ending date for which the information is applicable.	M	M	Default is 1 day
Data End Time (Data End Time)	The ending time for which the information is applicable.	SO	SO	
Flow Indicator (Flow Ind)	Indicates the direction of flow	C	C	Mandatory when Capacity Type is 'Operational Capacity Data'.
IT Indicator Data	An indicator which signifies whether or not interruptible transportation service is being utilized at this location.			

Business Name (Abbreviation)	Definition	EBB Usage	EDI/FF Usage	Condition
IT Indicator (IT)		C	C	Required if Capacity Report Type is 'Operationally Available Capacity Data' and Quantity-Operationally Available Capacity = 0 is zero. For EBB, when this condition is met, at least one of IT Indicator or IT Indicator Description is required.
IT Indicator Description (IT Desc)		C	nu	Required if Capacity Report Type is 'Operationally Available Capacity Data' and Quantity-Operationally Available Capacity = 0 is zero. For EBB, when this condition is met, at least one of IT Indicator or IT Indicator Description is required.
Location Data	Unique identification of a point, segment, zone or facility.			
Location * ** (Loc)		M	M	
Location Name *** (Loc Name)		M	SO	
Location Proprietary Code (Loc Prop)		C	C	Mandatory when Location is not present. When this field uniquely identifies the segment, a proprietary segment identifier may be used.
Location Purpose Data	Identifies the function of the location			
Location Purpose (Loc Purp)		nu	M	
Location Purpose Description (Loc Purp Desc)		M	nu	
Location/Quantity Type Indicator Data	Indicates the location type for the referenced capacity/quantity.			
Location/Quantity Type Indicator (Loc/QTI)		C	M	For EBB, at least one of Location/Quantity Type Indicator or Location/Quantity Type Indicator Description is required.

Business Name (Abbreviation)	Definition	EBB Usage	EDI/FF Usage	Condition
Location/Quantity Type Indicator Description (Loc/QTI Desc)		C	nu	For EBB, at least one of Location/Quantity Type Indicator or Location/Quantity Type Indicator Description is required.
Location Zone (Loc Zn)	The transportation service provider designated name, description or other identifier generally in use on the pipeline to identify the geographical zone of the location	SO	SO	
Measurement Basis Data	Measurement basis (by tariff) of this quantity.			
Measurement Basis (Meas Basis)		C	M	For EBB, at least one of Measurement Basis or Measurement Basis Description is required.
Measurement Basis Description (Meas Basis Desc)		C	nu	For EBB, at least one of Measurement Basis or Measurement Basis Description is required.
<u>Operating Capacity (OPC)</u>	<u>The total capacity which could be scheduled at (or through) the identified point, segment or zone in the indicated direction of flow.</u>	<u>C</u>	<u>C</u>	<u>Mandatory when 'Report Type' is 'Operational Capacity Data'.</u>
<u>Operationally Available Capacity (OAC)</u>	<u>The quantity remaining available to be scheduled at (or through) the identified point, segment or zone, in the indicated direction of flow.</u>	<u>C</u>	<u>C</u>	<u>Mandatory when 'Report Type' is 'Operational Capacity Data'.</u>
Posting Date (Post Date)	The date on which the service provider posts this information.	M	M	
Posting Time (Post Time)	The time on which the service provider posts this information.	M	M	
Pressure Base (Press Base)	Pressure base in the units specified by Pressure Base Indicator. Default value is 14.73 pounds per square inch (PSI).	C	C	Required if Measurement Basis is volumetric.
Pressure Base Indicator Data	Pressure base unit of measure when the Measurement Basis is volumetric.			
Pressure Base Indicator (Press Base Ind)		C	C	Mandatory when Measurement Basis is volumetric. For EBB, when this condition is met, at least one of Pressure Base Indicator or Pressure Base Indicator Description is required.

Business Name (Abbreviation)	Definition	EBB Usage	EDI/FF Usage	Condition
Pressure Base Indicator Description (Press Base Desc)		C	nu	Mandatory when Measurement Basis is volumetric. For EBB, when this condition is met, at least one of Pressure Base Indicator or Pressure Base Indicator Description is required.
Quantity Available (Qty Avail)	The best estimate, at the time of posting, of the quantity available at a location.	M	M	
Report Type Data	A code indicating the type of report being provided.			
Report Type (Rpt Type)		C	M	For EBB, at least one of Report Type or Report Type Description is required.
Report Type Description (Rpt Type Desc)		C	nu	For EBB, at least one of Report Type or Report Type Description is required.
Total Scheduled Quantity (TSQ)	The net quantity scheduled at the point, segment or zone in the indicated direction of flow.	C	C	Mandatory when 'Report Type' is 'Operational Capacity Data'.
Transportation Service Provider Data	A code which uniquely identifies the transportation service provider.			
Transportation Service Provider * 4 (TSP)		M	M	
Transportation Service Provider Name (TSP Name)		M	nu	
Transportation Service Provider Proprietary Code (TSP Prop)		C	C	Mandatory when Transportation Service Provider is not present.
Unsubscribed Capacity (Unsub Cap)	Unsubscribed firm capacity available from the transportation service provider.	C	C	Mandatory when 'Report Type' is 'Unsubscribed Capacity Data'.

RELEVANT FOOTNOTES:

* Indicates Common Code

** When a Transportation Service Provider's proprietary location code is employed pursuant to this standard, the parties agree that nominations, confirmations, scheduled quantities, and capacity release documents employing such code should be for one gas day at a time, and used only until there is a verified common code for the point associated with the proprietary location code. This would include daily nominations over a weekend. Within two months following the availability of the location the parties should employ the common code and no longer employ the proprietary code for identifying such location in the data sets related to the identified standards.

*** The Transportation Service Provider's version of the name.

⁴ Refer to NAESB WGQ Standard No. 0.3.2

CODE VALUES DICTIONARY

Bidder Affiliate Indicator

Code Value Description	Code Value Definition	Code Value
Bidder is affiliated with the TSP		TSP
Bidder is affiliated with the Releasing Shipper		RS
Bidder is affiliated with the TSP and the Releasing Shipper		Both
Bidder is affiliated with neither the TSP nor the Releasing Shipper		None

Note: This code value table is to be used only in the EBB implementation.

Capacity Type

Code Value Description	Code Value Definition	Code Value
Operationally available unscheduled capacity		4
Unsubscribed capacity available from the pipeline		2

Cycle Indicator (from R99013)

Code Value Description	Code Value Definition	Code Value
Evening Cycle	[no definition necessary]	
Intraday 1	[no definition necessary]	
Intraday 2	[no definition necessary]	
Timely	[no definition necessary]	
TSP Defined 1	TSP defined cycle	
TSP Defined 2	TSP defined cycle	
TSP Defined 3	TSP defined cycle	
TSP Defined 4	TSP defined cycle	
TSP Defined 5	TSP defined cycle	

Flow Indicator

Code Value Description	Code Value Definition	Code Value
Delivery	[no definition necessary]	
Receipt	[no definition necessary]	
Storage Injection	[no definition necessary]	

Code Value Description	Code Value Definition	Code Value
Storage Withdrawal	[no definition necessary]	

IT Indicator

Code Value Description	Code Value Definition	Code Value
Yes, at least a portion of the capacity being utilized at this location is interruptible.	[no definition necessary]	1
No, there is not interruptible transportation service as a portion of the capacity being utilized at this location.	[no definition necessary]	2

Location Purpose

Code Value Description	Code Value Definition	Code Value
Delivery Location	[no definition necessary]	MQ
Injection Point	[no definition necessary]	IJ
Mainline	[no definition necessary]	MV
Pipeline Segment defined by 1 location (or first of 2 locations)	[no definition necessary]	S9
Pipeline Segment defined by 2 locations (or second of 2 locations)	[no definition necessary]	S8
Receipt Location	[no definition necessary]	M2
Storage Area	[no definition necessary]	SB
Withdrawal Point	[no definition necessary]	WR

Location/Quantity Type Indicator

Code Value Description	Code Value Definition	Code Value
Delivery point(s) quantity	[no definition necessary]	2
Mainline quantity	[no definition necessary]	5
Receipt point(s) quantity	[no definition necessary]	1
Receipt point(s) to delivery point(s) quantity	[no definition necessary]	3
Segment(s) quantity	[no definition necessary]	4
Storage injection quantity	[no definition necessary]	7
Storage quantity	[no definition necessary]	6

Code Value Description	Code Value Definition	Code Value
Storage withdrawal quantity	[no definition necessary]	8

Measurement Basis

Code Value Description	Code Value Definition	Code Value
Gigacalories	[no definition necessary]	G8
Gigajoules	[no definition necessary]	GV
Million BTU's	[no definition necessary]	BZ
Thousand Cubic Feet	[no definition necessary]	TZ

Pressure Base Indicator

Code Value Description	Code Value Definition	Code Value
Pounds Per Square Inch Absolute	[no definition necessary]	80
Pounds Per Square Inch Gauge	[no definition necessary]	64

Report Type

Code Value Description	Code Value Definition	Code Value
Operational Capacity Data	Operating capacity, operationally available capacity and total scheduled quantity.	
Unsubscribed Capacity Data	[no definition necessary]	

TECHNICAL IMPLEMENTATION OF BUSINESS PROCESS

The Upload of Request for Download of Posted Datasets document (Request) is sent from the data requester to the transportation service provider and is used to request a download of specific reports from the transportation service provider. The response document to the Request is the Response to Upload of Request for Download of Posted Datasets.

In the Request, the data requester indicates what type(s) of report(s) are being requested by specifying the **data sets requested** field. This may include any or all of offers, bids, awards, operationally—available capacity, unsubscribed capacity, replacement capacity (where applicable), system wide notices, withdrawals, or pre-approved bidders list (where mutually agreed).

For data sets being requested other than the pre-approved bidders list, the requester must specify the time period for which data is being requested. For the pre-approved bidders list the date and time information is not applicable. There are three time period formats from which to choose. The requester can use only the **data begin date**, the **data begin date** and **data begin time**, or the **data begin date** and **data end date**. If no data end date is specified, the end date is essentially the data process date and time, which is included on the response document. The data process date and time is the date and time the transportation service provider processed the request and may be considered a "current to" date and time.

Using only the **data begin date** ensures that the requester will get all of the **data sets requested** that were posted on the **data begin date**. The download data will include all **data sets requested** that were posted from the **data begin date** to the data process date and data process time, inclusive.

The **data begin date** and **data begin time** are used together in order to obtain all **data sets requested** that were posted after the **data begin date** and **data begin time**. This choice would normally be used to obtain the **data sets requested** since the requester's last request was processed. The download data will include the **data sets requested** from the **data begin date** and **data begin time** to the data process date and data process time, inclusive.

The **data begin date** and **data end date** are used to request data that is no longer current. This choice would normally be used when gathering historical data from a time period that is no longer necessary for current operations. The download data will include the **data sets requested** from the **data begin date** to the **data end date**, inclusive.

Upon receiving the request, the transportation service provider then downloads any of the specified reports. These reports would have a posting date and posting time forward from the data begin date and begin time (if supplied). The ending date of the reports would be the data end date, if specified, or if not specified, the data process date and data process time. In those cases where the requester specified data end date is beyond the data process date, the data process date and time will become the ending date and time.

The data requester may specify and assign a **request ID** which is used to delineate the request from others sent by the requester. If supplied, the request ID is sent back to the requester in the response document.

The data requester and transportation service provider are identified in the Request by their entity common code number. Parties should mutually agree to use the Transportation Service Provider's proprietary entity code when the D-U-N-S® Number is not available.

CODE VALUES DICTIONARY

Data Sets Requested

Code Value Description	Code Value Definition	Code Value
Operationally Available and Unsubscribed Capacity	[no definition necessary]	5
Operationally Available Capacity (only)	[no definition necessary]	8
Unsubscribed Capacity (only)	[no definition necessary]	9

TECHNICAL IMPLEMENTATION OF BUSINESS PROCESS

The Response to Upload of Request for Download of Posted Datasets document (Response) is sent by the transportation service provider to the data requester in response to receiving and processing an Upload of Request for Download of Posted Datasets from the data requester. A Response is always sent, either with the reports responsive to the request, or alone if no reports match the parameters of the request.

The **data sets requested** field from the request is echoed back in the Response. The **data availability code**, which is included in the Response for each type of document originally requested, indicates whether there are any documents meeting the date criteria specified in the request when the document being requested is other than the pre-approved bidders list. For the pre-approved bidders list, the data availability code indicates whether the requested data is currently available or the document is supported. The **data process date** and **data process time** are contained in the response. These indicate the date and time the response was processed. In addition, for the documents other than the pre-approved bidders list, the data reported is the best available data as of the data process date and time ~~may be considered a "current to" date and time~~. Where no data end date is specified in the request, the data process date and time also represents the end date and time.

If the data requester supplied a **request ID** in the request, it is sent back to the requester in the Response.

The data requester and the transportation service provider are identified in the Response by their entity common code numbers. Parties should mutually agree to use the Transportation Service Provider's proprietary entity code when the D-U-N-S® Number is not available.

CODE VALUES DICTIONARY

Data Sets Requested

Code Value Description	Code Value Definition	Code Value
Operationally Available and Unsubscribed Capacity	[no definition necessary]	5
Operationally Available Capacity (only)	[no definition necessary]	8
Unsubscribed Capacity (only)	[no definition necessary]	9

**IR Workpaper 08/25/04
R99033 and R96018**

BUSINESS PROCESS DOCUMENTATION (for addition, modification or deletion of business process documentation language)

Standards Book: NAESB WGQ Capacity Release Related Standards

Language: Business Process and Practices
<ul style="list-style-type: none">• Add the 4 standards (S86 – S89) adopted by the Executive Committee on February 10, 2000 after Standard 5.3.60• Add the proposed standard NAESB WGQ Standard 5.3.x from R96018 adopted by BPS on February 3, 2000, as modified [REDACTED], after the above 4 standards.

**Standards Book: NAESB WGQ Capacity Release Related Standards:
NAESB WGQ 5.4.15 – Response to Upload of Request for Download of
Posted Data Sets**

Language: Technical Implementation of Business Processes – Modify the 2nd paragraph as follows:
The data sets requested field from the request is echoed back in the Response. The data availability code , which is included in the Response for each type of document originally requested, indicates whether there are any documents meeting the date criteria specified in the request when the document being requested is other than the pre-approved bidders list. For the pre-approved bidders list, the data availability code indicates whether the requested data is currently available or the document is supported. The data process date and data process time are contained in the response. These indicate the date and time the response was processed. In addition, for the documents other than the pre-approved bidders list, the <u>data reported is the best available data</u> as of the data process date and time may be considered a "current to" date and time . Where no data end date is specified in the request, the data process date and time also represents the end date and time.

**IR Workpaper 08/25/04
R99033 and R96018**

The following levels for the data elements are provided for the Technical Subcommittee's use in mapping the EDI document. This table will not appear in the recommendation form that goes to the Executive Committee for approval.

Business Name (Abbreviation)	EBB Usage	EDI/FF Usage	Level
Available Capacity Effective Date (Avail Cap Eff Date)	M	M	Header and Detail
Available Capacity Effective Time (Avail Cap Eff Time)	M	M	Header and Detail
Available Capacity End Date (Avail Cap End Date)	M	M	Header and Detail
Available Capacity End Time (Avail Cap End Time)	SO	SO	Header and Detail
Capacity Type Data	E	M	Header
Cycle Indicator (Cycle)	C	C	?
Comments and Notes (Comments)	SO	SO	?
Data Effective Date (Data Eff Date)	M	M	?
Data Effective Time (Data Eff Time)	M	M	?
Data End Date (Data End Date)	M	M	?
Data End Time (Data End Time)	SO	SO	?
Flow Indicator (Flow Ind)	C	C	?
IT Indicator Data	C	C	Detail
Location Data	M	M	Sub-detail
Location Purpose Data	M	M	Sub-detail

**IR Workpaper 08/25/04
R99033 and R96018**

Business Name (Abbreviation)	EBB Usage	EDI/FF Usage	Level
Location/Quantity Type Indicator Data	C	M	Detail
Location Zone (Loc Zn)	SO	SO	Sub-detail
Measurement Basis Data	C	M	Detail
<u>Operating Capacity (OPC)</u>	<u>C</u>	<u>C</u>	Sub-detail
<u>Operationally Available Capacity (OAC)</u>	<u>C</u>	<u>C</u>	Sub-detail
Posting Date (Post Date)	M	M	Header
Posting Time (Post Time)	M	M	Header
Pressure Base (Press Base)	C	C	Detail
Pressure Base Indicator Data	C	C	Detail
Quantity Available (Qty Avail)	M	M	Detail and Sub- detail
Report Type Data	<u>C</u>	<u>M</u>	Header
<u>Total Scheduled Quantity (TSQ)</u>	<u>C</u>	<u>C</u>	Sub-detail
Transportation Service Provider Data	M	M	Header
<u>Unsubscribed Capacity (Unsub Cap)</u>	<u>C</u>	<u>C</u>	Sub-detail

NORTH AMERICAN ENERGY STANDARDS BOARD
Executive Committee Meeting - WEQ, REQ, RGQ, WGQ Meeting Materials
August 24-26, 2004

Electronic Delivery Mechanisms Subcommittee

**NORTH AMERICAN ENERGY STANDARDS BOARD
WGQ EDM SUBCOMMITTEE
Thursday, 12 August 2004**

DRAFT MEETING MINUTES

Attendees:

Christopher Burden	Williams Gas Pipeline	In person
Greg Dodson	Dominion	In person
Leigh Spangler	Latitude Technologies	In person
Michael Stender	EPNG	In person

Christopher called the meeting to order at 10:00 am.

The antitrust guidelines were read.

The Agenda was adopted without changes.

The Draft minutes of the July 20, 2004 EDM meeting were reviewed and approved without changes.

The review of Tab 9, which was started at the July 21, 2004 meeting, was completed.

Tab 10 (the Appendices) was reviewed.

It was proposed that a final review of the entire document be done by members of the Subcommittee prior to the next meeting, noting specifically:

- Correct references to Appendices
- Executive Summary and other Tab summaries are complete/correct
- Internal document references are correct
- Headers/footers
- NAESB watermarks and references
- Correct references to Internet ET

All the Tabs/documents that have been reviewed will be posted on the NAESB web site (under meeting minutes for this meeting.)

Prior to the next meeting, Christopher will create "functional cross-reference" of NAESB technical standards. The goal is to group by reference all the standards that pertain to a given EDM topic (e.g. IP sites, CA sites, etc.)

Also prior to the next meeting, Leigh will create listing of all the changes to the Version 1.6 EDM standards that have occurred as a result of the creation of the Internet ET and WGQ QEDM. It was thought that this document would be useful in describing to the WGQ EC the changes that had been made.

The next meeting will be Monday 20 September 2004, 10:00 - 2:00. It will be a webcast.

The meeting was adjourned at 1:00 pm.

NORTH AMERICAN ENERGY STANDARDS BOARD
Executive Committee Meeting - WEQ, REQ, RGQ, WGQ Meeting Materials
August 24-26, 2004

Contracts Subcommittee



North American Energy Standards Board

1301 Fannin, Suite 2350, Houston, Texas 77002
Phone: (713) 356-0060, Fax: (713) 356-0067, E-mail: naesb@aol.com
Home Page: www.naesb.org

August 13, 2004

TO: NAESB WGQ Contracts Subcommittee

FROM: Cynthia Corcoran (Enbridge) & Keith Sappenfield (EnCana Corporation), Co-Chairs WGQ Contracts Subcommittee (ISDA Gas Annex matter), Rae McQuade (NAESB Executive Director)

RE: Agenda for NAESB WGQ Contracts Subcommittee Meeting – August 31, 2004

There is a conference call scheduled for Tuesday, August 31, 2004 to commence discussion of the processing of the ISDA Gas Annex Request (R04019) in accordance with the discussion of the last NAESB WGQ Contracts meeting of July 12, 2004 where it was decided that review and processing of the ISDA Gas Annex would occur at separate meetings. The agenda for the conference call is provided below. Please feel free to call the NAESB office should you have any questions or comments. Conference calling number, password and conference leader information will be available by calling the NAESB Office at 713-356-0060. We look forward to your participation in the WGQ Contracts Subcommittee conference call.

NORTH AMERICAN ENERGY STANDARDS BOARD WGQ CONTRACTS SUBCOMMITTEE MEETING

Location: Conference Call

Tuesday, August 31, 2004 – 1:00 p.m. to 3:00 p.m., Central Time

DRAFT AGENDA

- 1:00 p.m.
1. Welcome & Administrative Items
 - Antitrust Guidelines
 - Agenda Adoption
 2. Review and discuss processing of ISDA Gas Annex request R04019 including discussions of the following items that were requested at the last NAESB WGQ Contracts meeting
 - Latest Version of ISDA Gas Annex is dated August 2, 2004 and is posted on the web site for this meeting
 - ISDA member will attend the meeting to discuss ISDA's interest in NAESB's comments/changes/passage of the Gas Annex request more fully and respond to questions from the participants
 - High level review of comparison of ISDA Gas Annex to NAESB contract. Spreadsheet comparing the documents is posted on the web site for this meeting.
 3. Next Steps
 - Solicit, receive and review comments on ISDA Gas Annex draft
 - Establish meeting dates, time and locations for review of comments and start of NAESB review process.
 4. Other Matters.
 5. Adjourn

Work papers are the documents referenced for the August 31, 2004 Conference Call -- (posted on the NAESB Web Site – <http://www.naesb.org/wgq/contract.asp>):

North American Energy Standards Board

1301 Fannin, Suite 2350, Houston, Texas 77002

Phone: (713) 356-0060, Fax: (713) 356-0067, E-mail: naesb@naesb.org

Home Page: www.naesb.org

via email and posting

TO: NAESB WGQ Contracts Subcommittee Meeting Participants and Posting for Interested Parties
FROM: Todd Oncken, Deputy Director
RE: Meeting Minutes - July 12, 2004
DATE: July 19, 2004

**North American Energy Standards Board
Wholesale Gas Quadrant Contracts Subcommittee
July 12, 2004 in Houston, TX
Draft Minutes**

1. Welcome

Ms. Corcoran called the meeting to order and welcomed participants. Mr. Oncken gave the antitrust advice. Participants introduced themselves. The draft agenda was reviewed. Mr. Scheel moved, seconded by Mr. Austin, to adopt the agenda as written. The motion passed unanimously.

2. Review and discussion of pending requests for standards

Request R03033 (Arbitration): Mr. Ulicne presented the request submitted by the American Arbitration Association (AAA). Mr. Ulicne stated arbitration is cost-efficient and effective and urged the Contracts Subcommittee to include a standard mediation and arbitration provision in the NAESB Base Contract for Purchase and Sale of Natural Gas (Base Contract), as requested. Mr. Ulicne stated that although the request proposes including the AAA rules, discussing use of arbitration in the agreement would be a starting point that could perhaps lead to discussion of the adoption of specific rules.

During discussion there was not support for including language into the Base Contract. Reasons stated included: the arbitration clause is typically a negotiated item; it would be difficult to agree to standard language; some organizations have a policy against including arbitration clauses in agreements; and an arbitration clause might not be appropriate for all uses of the Base Contract (firm and interruptible sales for 1 hour to 10 years). It was also noted that an arbitration provision was discussed during the previous Base Contract revision and there was not support for its inclusion in the contract.

However, the subcommittee discussed whether it would be appropriate to include arbitration language as a model, outline, or annex to the Base Contract. Mr. Novak noted that discussing the arbitration language in that manner would allow the subcommittee to determine how well the language was accepted among the industry while not becoming a mandatory part of the Base Contract. As an alternative, Mr. Novak suggested the subcommittee consider creating an outline that would provide the structure for an arbitration clause, but allow individual organizations to draft the actual language. He noted the Retail Quadrants have used this approach for other agreements. Several participants, including Mr. Scheel and Mr. Novak, supported the concept if the subcommittee moves forward to discuss the request, since this approach would make it an optional element of the Base Contract.

North American Energy Standards Board

1301 Fannin, Suite 2350, Houston, Texas 77002

Phone: (713) 356-0060, Fax: (713) 356-0067, E-mail: naesb@naesb.org

Home Page: www.naesb.org

Request R03033 was slated as an agenda item for the next meeting. Discussions are expected to include whether arbitration language should be included as a model, outline, or annex.

Request R04017 (Trading Partner Agreement): Mr. Novak presented the request, noting that a minor change to the WGQ EDI Trading Partner Agreement (TPA) would make it applicable for use as a NAESB standard in a retail context. He noted that the proposed change, outlined in the request, does not change the substance of the agreement. Mr. Novak stated that since the WGQ, REQ and RGQ have developed, and are in the process of adopting, a joint EDM, it makes sense that the TPA could be adopted as well.

It was noted that the Triage Subcommittee assigned the request jointly to the WGQ Contracts Subcommittee, REQ SUIS and RGQ SUIS. Participants discussed different approaches for working collaboratively. It was decided that the Contracts Subcommittee would make the requested modification, and any other appropriate changes, and forward the modified document to the REQ SUIS and RGQ SUIS for their consideration. All three subcommittees would vote on the final document.

Request R04017 was slated as an agenda item for the next meeting. It was requested that any proposed modifications to the TPA be submitted as work papers prior to the meeting.

Request R04019 (ISDA Gas Annex): Mr. Sappenfield presented the request. Mr. Sappenfield stated ISDA has worked through a first draft of a gas annex to the ISDA agreement and has requested input from NAESB. Mr. Sappenfield volunteered to coordinate future action on the request. Mr. Sappenfield stated the subcommittee needed an understanding of how the ISDA master agreement works to understand the proposed gas annex and will work with Mr. Bunkin to coordinate a presentation on the ISDA for a subsequent meeting.

During discussion Ms. Sager stated ISDA was nearing publication of its first version of the gas annex. Mr. Sappenfield agreed that was likely, but added any comments the subcommittee provided could be considered for the next version of the gas annex. The subcommittee supported making comments that would be considered for inclusion in the document, but did not support rubber-stamping the agreement. Additionally, Mr. Kline suggested that a comparison of the Base Contract provisions against the ISDA and ISDA Gas Annex provisions would be helpful in evaluating the agreement and making comments. Ms. Greenblatt noted that the adequate assurance and confirmation procedures appear to be different. Mr. Sappenfield will follow up with Mr. Bunkin on how ISDA intends to consider the subcommittee's comments and whether a comparison of the two agreements is available.

The subcommittee will work on Request R04019 through single topic meetings. Mr. Sappenfield will submit the most current version of the draft gas annex and ISDA Master Agreements for posting.

3. Review and discussion of pending requests for clarification

Request C03006 (Base Contract): Mr. Novak reviewed the request for clarification, noting that noted the Interpretations Subcommittee referred the request to the Contracts Subcommittee for determination. Mr. Novak stated there have been differing interpretations about whether, pursuant to the Base Contract, disclosing counterparty information was appropriate when price reporting was required. Mr. Novak stated that clarity on the issue was very important in the current environment.

During discussion it was noted that the FERC is currently considering whether counterparty should be identified and disclosed; as well as other instances of litigation on the issue.

North American Energy Standards Board

1301 Fannin, Suite 2350, Houston, Texas 77002

Phone: (713) 356-0060, Fax: (713) 356-0067, E-mail: naesb@naesb.org

Home Page: www.naesb.org

Participants were reluctant to interpret the contract, noting that an interpretation of the contract would not carry any legal weight and could be viewed as an amendment to the contract since it potentially changes the parties' understanding at the time the contract was executed. Pending the outcome of pertinent FERC proceedings, Mr. Novak indicated he would consider filing a request for standards to amend the Base Contract.

4. Discussion of possible activities for a gas annex to the EEI Power Contract

Ms. Sager stated the EEI drafting committee has been working on an annex to the EEI Contract that would allow parties to trade physical gas. Ms. Sager stated the draft includes pertinent sections from the Base Contract that address the gas commodity. She noted the group has been working on the draft for approximately six months. Ms. Sager projected the annex would be published and available in approximately two weeks. As the Contracts Subcommittee's role in regards to this effort was undetermined, Ms. Corcoran will contact Ms. Lauderdale to discuss whether any action on the part of the subcommittee is required and report back to the subcommittee at the next meeting.

5. Other Business

The subcommittee scheduled a conference call for August 19 from 1:30 to 3:30 p.m. Central to discuss Requests R03033, R04017 and have an update on the possible annex to the EEI Power Contract. Request R04019 will be discussed separately, at a meeting TBD.

6. Adjourn

The meeting adjourned at 3:00 p.m. Central.

7. Attendance

Name	Organization	Notes
Jason Austin	Cinergy Marketing & Trading	In Person
Martha Braddy	BG LNG Services, LLC	In Person
Cynthia Corcoran	Enbridge Pipeline	In Person
Mary Francis Edmonds	Williams	Phone
Marcia Greenblatt	Sempra Energy Trading	Phone
Dona Gussow	Florida Power & Light Company	Phone
Tom Heckathorn	Columbia Distribution	Phone
Jason Klein	BG LNG Services, LLC	In Person
Melissa Lauderdale	Edison Electric Institute	Phone
Tracy McLaughlin	American Electric Power	Phone
Ruby Melton	Louis Dreyfus	Phone
Bill Newbold	Detroit Edison	Phone
Michael Novak	National Fuel Distribution	Phone
Todd Oncken	NAESB	In Person
Rochelle Pleasant	Total Gas & Power	In Person
Denise Rager	NAESB	In Person
Mark Russell	Salt River Project	Phone
Elizabeth Sager	UBS	Phone
Keith Sappenfield	EnCana Corp	Phone
Mark Scheel	ChevronTexaco	In Person

North American Energy Standards Board

1301 Fannin, Suite 2350, Houston, Texas 77002

Phone: (713) 356-0060, Fax: (713) 356-0067, E-mail: naesb@naesb.org

Home Page: www.naesb.org

Bobby Shockley	El Paso Production	In Person
Sherry Stofer	Cinergy Marketing & Trading	In Person
Cathy Szasz	American Electric Power	Phone
Anthony Targan	DTE Energy Trading	Phone
Rick Tucker	EnCana	Phone
David Ulicne	American Arbitration Association	Phone
David Webster	Calpine	In Person

NORTH AMERICAN ENERGY STANDARDS BOARD
Executive Committee Meeting – WEQ, REQ, RGQ, WGQ Meeting Materials
August 24-26, 2004

TAB 18

Proposed Standards – Producer Imbalance Statement

- *Proposed Standards*
- *Comments*

NORTH AMERICAN ENERGY STANDARDS BOARD
Executive Committee Meeting - WEQ, REQ, RGQ, WGQ Meeting Materials
August 24-26, 2004

Proposed Standards



North American Energy Standards Board

1301 Fannin, Suite 2350, Houston, Texas 77002

Phone: (713) 356-0060, Fax: (713) 356-0067, E-mail: naesb@naesb.org

Home Page: www.naesb.org

via email and posting

TO: NAESB WGQ Members and Interested Industry Participants
FROM: Denise Rager, Membership and Meeting Administrator
RE: Wholesale Gas Quadrants Request For Comments
DATE: July 23, 2004

An industry comment period begins today, July 23 and ends on August 23, 2004 for the recommendation attached. The Executive Committee will meet on August 26 to review this recommendation and consider it for vote as a NAESB Wholesale Gas Quadrant (WGQ) standard.

The recommendation can be accessed from the NAESB Web site, but is also attached to this request for comment. All comments received by the NAESB office by end of business on August 23 will be posted on the Home Page and forwarded to the WGQ EC members for their consideration. If you have difficulty retrieving this document, please call the NAESB office at (713) 356-0060.

Best Regards,

Denise Rager

cc: Rae McQuade, Executive Director



RECOMMENDATION TO NAESB WGQ EXECUTIVE COMMITTEE

Requester: Exxon Company USA

Request No.: R96056

1. RECOMMENDED ACTION:

- Accept as requested
- Accept as modified below
- Decline

EFFECT OF EC VOTE TO ACCEPT RECOMMENDED ACTION:

- Change to Existing Practice
- Status Quo

2. TYPE OF MAINTENANCE

Per Request:

- Initiation
- Modification
- Interpretation
- Withdrawal

- Principle (x.1.z)
- Definition (x.2.z)
- Business Practice Standard (x.3.z)
- Document (x.4.z)
- Data Element (x.4.z)
- Code Value (x.4.z)
- X12 Implementation Guide
- Business Process Documentation

Per Recommendation:

- Initiation
- Modification
- Interpretation
- Withdrawal

- Principle (x.1.z)
- Definition (x.2.z)
- Business Practice Standard (x.3.z)
- Document (x.4.z)
- Data Element (x.4.z)
- Code Value (x.4.z)
- X12 Implementation Guide
- Business Process Documentation

3. RECOMMENDATION

SUMMARY:

- Add a new data set to the NAESB WGQ Flowing Gas book – Producer Imbalance Statement (2.4.z) – including a Technical Implementation of Business Practices, Sample Paper, Data Dictionary, Code Values Dictionary Data Element Cross Reference to ASC X12, Sample ASC X12 Transaction, EDI Data Set, and Transaction Set Tables.
- Modify the Business Process and Practices section of the NAESB WGQ Flowing Gas book.
- Modify the Executive Summary section of the NAESB WGQ Flowing Gas book.
- Add a new standard to the NAESB WGQ Flowing Gas book – [2.3.z1].

STANDARDS LANGUAGE:

Proposed Standard 2.3.z1

If parties mutually agree to exchange producer imbalance statements, they should do so using the NAESB WGQ Standard No. [2.4.z].

DATA DICTIONARY (for new documents and addition, modification or deletion of data elements)

Document Name and No.: **Producer Imbalance Statement 2.4.z**
(see attached)



RECOMMENDATION TO NAESB WGQ EXECUTIVE COMMITTEE

Requester: Exxon Company USA

Request No.: R96056

CODE VALUES LOG (for addition, modification or deletion of code values)

Document Name and No.: **Producer Imbalance Statement 2.4.z**
(see attached)

BUSINESS PROCESS DOCUMENTATION (for addition, modification or deletion of business process documentation language)

Standards Book: **Flowing Gas**

EXECUTIVE SUMMARY

Modify the first paragraph as follows:

Six~~seven~~ areas of the natural gas business processes are classified within the Flowing Gas area. The ~~six~~seven areas include:

1. **Pre-determined Allocation**
The communications concerning an agreement on the factors that should be used to drive the determination of entitlement rights of flowing gas at a location,
2. **Allocation**
The communications of the entitlement rights of flowing gas at a location,
3. **Shipper Imbalance**
The communications of entitlement rights of flowing gas on a contract level,
4. **Imbalance Netting & Trading**
The communications and management of Imbalance Trading,
5. **Measurement Information**
The communications of the estimated or actual physical flow of gas at a location, ~~and~~
6. **Measured Volume Audit Statement**
The communication of the estimated or actual physical flow of gas at a location along with gas quality information; ~~and~~
7. **Producer Imbalance Statement**
The communication of the actual production deliveries versus the entitlement rights of interest owners at a production location.

Add as the last paragraph the following:

The Producer Imbalance Statement data set contains information at a location informing the interest owners of their entitlement, deliveries and the resulting imbalance.:



RECOMMENDATION TO NAESB WGQ EXECUTIVE COMMITTEE

Requester: Exxon Company USA

Request No.: R96056

Standards Book: Flowing Gas

BUSINESS PROCESSES AND PRACTICES

Add the following as the last paragraph under Section A: Overview

Producer Imbalance

The Producer Imbalance Statement data set is used to report the entitlement, the production deliveries and the current month / ending imbalance quantities for interest owners at a location. Interest owner(s)'s entitlement percentage is used to determine its proportionate share, known as the entitlement quantity, of the total production deliveries. This entitlement quantity is compared to the actual production deliveries allocated to each interest owner. The difference is the current month imbalance. This information is used by the interest owners and the operator of the location for balancing / settlement purposes.

Standards Book: Flowing Gas

Document Name and No: Producer Imbalance Statement (2.4.z)

TECHNICAL IMPLEMENTATION OF BUSINESS PROCESS

(see attached)

TECHNICAL CHANGE LOG (all instructions to accomplish the recommendation)

See attached

Data Element Cross Reference to ASC X12

Sample ASC X12 Transaction

EDI Data Set

Transaction Set Tables

4. SUPPORTING DOCUMENTATION

a. Description of Request:

b. Description of Recommendation:

Business Practices Subcommittee

Instruct the Information Requirements Subcommittee to develop a Producer Imbalance Statement starting with on the proposed data dictionary from existing Gas Flow documents and work papers from Market Settlement Task Force, and regarding implementation issues, implementation should be governed by the following: "If parties mutually agree to exchange



RECOMMENDATION TO NAESB WGQ EXECUTIVE COMMITTEE

Requester: Exxon Company USA

Request No.: R96056

producer imbalance statements, they should do so using the GISB Standard No. [standard number reflected by Request No. R96056].

Motion:

The motion was made, seconded and the above language was adopted as a instruction to the Information Requirements Subcommittee.

Sense of the Room: April 9, 1998 16 In Favor 0 Opposed

Segment Check (if applicable):

In Favor: End-Users LDCs 11Pipelines 1Producers 4Services
Opposed: End-Users LDCs Pipelines Producers Services

Information Requirements Subcommittee

See minutes for the following Information Requirements Subcommittee meetings:

- July 29, 1997
- June 9, 1998
- July 14, 1998
- January 10, 2000
- June 12, 2001
- October 9, 2001
- November 13, 2001
- December 11, 2001
- February 19, 2002
- April 16, 2002
- May 14, 2002
- May 6, 2003
- June 3, 2003
- July 25, 2003

—**Motion:** May 14, 2002

Adopt the attached Producer Imbalance Statements documents as follows:

- Data Dictionary
- Code Values Dictionary
- Technical Implementation Of Business Process
- Sample Paper Transaction
- Modifications to the Executive Summary section of the Flowing Gas book.
- Modifications to the Business Process and Practices section of the Flowing Gas book.



RECOMMENDATION TO NAESB WGQ EXECUTIVE COMMITTEE

Requester: Exxon Company USA

Request No.: R96056

Vote				Balanced	Balanced	Balanced
	For	Against	Total	For	Against	Total
End Users	0	0	0	0.00	0.00	0
LDCs	0	0	0	0.00	0.00	0
Pipelines	3	0	3	2.00	0.00	2
Producers	1	0	1	1.00	0.00	1
Services	1	0	1	1.00	0.00	1
	5	0	5	4.00	0.00	4

Motion Passes

MOTION: (May 6, 2003)

Incorporate the modifications to the TIBP, Sample Paper, Data Dictionary, Code Values Dictionary and the COPAS / NAESB cross reference documents as reflected on the attached workpapers into the previous IR workpapers from the May 14, 2002 meeting.

Vote				Balanced	Balanced	Balanced
	For	Against	Total	For	Against	Total
End Users	0	0	0	0.00	0.00	0
LDCs	0	0	0	0.00	0.00	0
Pipelines	4	0	4	2.00	0.00	2
Producers	1	0	1	1.00	0.00	1
Services	0	0	0	0.00	0.00	0
	5	0	5	3.00	0.00	3

Motion Passes

MOTION: (June 3, 2003)

Adopt the revised workpaper for R96056.

Vote				Balanced	Balanced	Balanced
	For	Against	Total	For	Against	Total
End Users	0	0	0	0.00	0.00	0
LDCs	0	0	0	0.00	0.00	0
Pipelines	8	0	8	2.00	0.00	2
Producers	0	0	0	0.00	0.00	0
Services	0	0	0	0.00	0.00	0
	8	0	8	2.00	0.00	2

Motion Passes



RECOMMENDATION TO NAESB WGQ EXECUTIVE COMMITTEE

Requester: Exxon Company USA

Request No.: R96056

MOTION: (July 25, 2003)

Adopt the revised workpaper for R96056 as reflected in the attached.

Vote			Balanced			
	For	Against	Total	For	Against	Total
End						
Users	0	0	0	0.00	0.00	0
LDCs	0	0	0	0.00	0.00	0
Pipelines	2	0	2	2.00	0.00	2
Producers	0	0	0	0.00	0.00	0
Services	1	0	1	1.00	0.00	1
	3	0	3	3.00	0.00	3

Motion Passes

Technical Subcommittee

See minutes and attachments for the following Technical Subcommittee meetings:

- 05/05/2003
- 06/02/2003
- 07/09/2003
- 08/04/2003
- 03/30/2004
- 05/04/2004
- 06/23/2004 (voting record)

c. Business Purpose:

d. Commentary/Rationale of Subcommittee(s)/Task Force(s):

The purpose of the request is to provide a standardized communication of a producer imbalance statement based on the information currently communicated using COPAS Bulletin 24 10/2000. In order to provide a clear understanding of the data element used in NAESB and the corresponding data elements used in the COPAS Bulletin, attached is a data element cross reference table.

TECHNICAL IMPLEMENTATION OF BUSINESS PROCESS

The Producer Imbalance Statement is a report from the operator of a production facility to its working interest owners (producers) that indicates the difference between the current month **entitlement quantity** and the total **production deliveries**. NAESB WGQ Standard 2.4.3 requires all NAESB reports to be reported on a dry basis. The entitlement quantity, the production deliveries and the imbalance quantity are reported by **interest owner percentage**. The interest owner percentage can be any of the following:

- gross working interest;
- royalty interest;
- Proportionate Production Interest (PPI); or,
- net working interest.

The interest owner percentage can be any of the above for a given interest owner. When all interest owners' percentages are added together, the total must equal 100% of the total gross working interest for the **location**.

The entitlement quantity is calculated by multiplying total production delivery quantities times each producer's interest owner percentage for the subject well or lease facilities, which is the location. For purposes of this document, the location is synonymous with 'Facility Name' as it is used in COPAS Bulletin 24, 10/2000 (see the following COPAS / NAESB Cross Reference). The location should reflect the level of detail (well, lease, field, county, state, etc.) necessary to represent the level at which the data is being reported.

The **imbalance period** refers to a month and a year. The **beginning imbalance quantity** equals the previous month's **cumulative ending imbalance quantity**. The **imbalance quantity** is the imbalance for the current month for an **interest owner** for each **transportation service provider**. The **ending imbalance quantity** is calculated by adding the beginning imbalance quantity and the current month imbalance quantity.

The **cumulative beginning imbalance quantity** is calculated by adding the beginning imbalance quantity for a specified interest owner for the current month. The **cumulative imbalance quantity** is calculated by adding the imbalance quantities for a specified interest owner for the current month. The **cumulative ending imbalance quantity** is calculated by adding the cumulative beginning imbalance quantity, the cumulative imbalance quantity and the **cumulative prior period adjustment** for a specified interest owner.

The cumulative prior period adjustment is reported only on the current month report and should be supported by an accompanying revised statement that reflects the adjustment to the applicable prior imbalance period(s). (For example, if the current month being reported is April and prior period adjustments for January and February are included in April's cumulative prior period adjustment, April's report and revised January and February reports are required, but a revised March report is not required.) The default value for cumulative prior period adjustments is zero.

COPAS / NAESB Cross Reference

Sorted by COPAS Data Element Number (COPAS Bulletin 24 – October 2000)

COPAS Data Elements				NAESB Data Elements				
Data Elem. No.	Business Name	Definition	Usage	Business Name	Definition	EBB Usage	EDI Usage	Condition
HEADER INFORMATION								
1.	For the Month of	The production month that this report represents	R	Imbalance Period	The period during which the imbalance occurred or the cumulative imbalance is reported.			
2.	Operator (preparer) Name	The name of the statement preparer and Operator of the facility covered by this report	R	Preparer Data Preparer ID * Preparer ID Proprietary Code Preparer Name	The name of the business party preparing the report	M	M	
				Location Operator Data Location Operator* Location Operator Name Location Operator Proprietary Code	The party recognized as the operator of record for the location.	M	M	
3.	Facility Name	The name of the facility to which this report applies (When the facility is a well, the API well number should be used in this data element.)	R	Location Data Location* Location Name Location Proprietary Code	Unique identification of a point.	M	M	

COPAS Data Elements				NAESB Data Elements				
Data Elem. No.	Business Name	Definition	Usage	Business Name	Definition	EBB Usage	EDI Usage	Condition
4.	Facility Indicator	Whether the facility is a well, lease, gathering system, or gas plant	R	NONE	Data extractable from Location Data	N/A	N/A	
5.	Reservoir Name	The name of the reservoir for which this statement applies (Required if the facility is a well)	C	NONE	Data extractable from Location Data	N/A	N/A	
6.	Location	The location of the facility (field, county and state)	R	NONE	Data extractable from Location Data	N/A	N/A	
7.	Date Prepared	The date this report was prepared	R	Statement Date/Time	Date and time the statement was produced.	M	M	
8.	Name of Preparer	The name of the person preparing the report	R	Preparer Contact Name	The name of the contact person for questions regarding the statement information.	M	M	
9.	Phone Number	The phone number of the person preparing the report	R	Preparer Contact Phone Number	The phone number of the contact person for questions regarding the statement information.			
	NONE			Preparer Contact E-mail Address	The e-mail address of the contact person for questions regarding the statement information.	SO	SO	

COPAS Data Elements				NAESB Data Elements				
Data Elem. No.	Business Name	Definition	Usage	Business Name	Definition	EBB Usage	EDI Usage	Condition
	NONE			Preparer Contact Fax Number	The fax number of the contact person for questions regarding the statement information.	SO	SO	
10.	Balancing Units (MCF / MMBTU)	The measurement of the quantities reported on this statement	R	Unit of Measure	Specifies the unit or basis for measurement for the corresponding measurement value.	M	M	[Code values = Gigacalories, Gigajoules, Kilopascal, MMBTU PSIA, PSIG and Thousand Cubic Feet]
11.	Pressure Base	The pressure base of volumes reported on this report (Required if balancing units are MCF)	C	Reporting Pressure Base	Pressure base used in reporting volume in MCFs.	C	C	Mandatory when Unit of Measure for associated quantity is 'Thousand Cubic Feet'.
12.	Wet/Dry Basis	The BTU test basis used to determine the MMBTUs recorded on this report (Wet refers to tests taken and results stated on a fully saturated with water basis. Required if the balancing units are MMBTU)	C	NONE	NAESB WGQ Standard 2.4.3 requires all NAESB reports to be reported on a dry basis.	N/A	N/A	

COPAS Data Elements				NAESB Data Elements				
Data Elem. No.	Business Name	Definition	Usage	Business Name	Definition	EBB Usage	EDI Usage	Condition
	NONE			Statement Recipient Data Statement Recipient ID * Statement Recipient Name Statement Recipient Proprietary Code	The intended user of the statement.	M	M	
SUMMARY VOLUME IMBALANCE INFORMATION								
13.	Transporter	The name of the transporter that is transporting or purchasing the gas	R	Transportation Service Provider Data Transportation Service Provider * Transportation Service Provider Name Transportation Service Provider Proprietary Code	A code which uniquely identifies the transportation service provider.	M	M	
14.	Operator/Owner	The name of the taking owner for well and lease reports (The name of either the lease Operator or the taking owner for gathering system or gas plant reports. Owner would also include royalty taking in-kind.)	R	Interest Owner Data Interest Owner * Interest Owner Name Interest Owner Proprietary Code	The entity with ownership interest in the gas.	M	M	At least one of Interest Owner or Interest Owner Proprietary Code is mandatory.

COPAS Data Elements				NAESB Data Elements				
Data Elem. No.	Business Name	Definition	Usage	Business Name	Definition	EBB Usage	EDI Usage	Condition
15.	W. I. %	The working, royalty, or PPI of the taking owner or Operator previously listed in #14 (This percentage would be net of royalty taken in-kind.)	R	Interest Owner Percentage	Percentage of the gas owned by the Interest Owner dedicated to a specified Transportation Service Provider.	M	M	

COPAS Data Elements				NAESB Data Elements				
Data Elem. No.	Business Name	Definition	Usage	Business Name	Definition	EBB Usage	EDI Usage	Condition
16.	Current Month Entitlement	The quantity of gas each Operator/taking owner is entitled to take and its working, royalty, or PPI share of actual gas available for delivery. (This quantity is calculated by multiplying total production delivery quantities (#22) times each taking owner's working, royalty, or PPI (#15) for well or lease facilities. If the Operator/Owner (#14) is delivering to more than one transporter (#13), the total entitlement described herein must be split between the applicable transporters based on contract dedication percentages or some other method in order that the total entitlement listed for the taking owner equals its working, royalty, or PPI percent (#15) times the total delivery quantities (#22) for well or lease facilities.	R	Entitlement Quantity	The quantity of gas each interest owner is entitled to take of the Grand Total – All Transportation Service Providers for a given Transportation Service Provider.	M	M	

COPAS Data Elements				NAESB Data Elements				
Data Elem. No.	Business Name	Definition	Usage	Business Name	Definition	EBB Usage	EDI Usage	Condition
17.	Production Delivery	The quantity of gas delivered to the transporter or used off-lease for the account of each Operator or taking owner based on the facility Operator's or transporter's allocation statement	R	Production Delivery	The quantity of gas delivered to a location for the account of each Interest Owner based on the Location Operator's allocation statement.	M	M	
18.	Est./Act.	An indication of whether the production deliveries reported in item #17 are estimates or actual quantities	R	Statement Basis Data Statement Basis Statement Basis Code Name	Code used to identify statement quantities as estimate, actual or revision. Default value is actual.	C	M	For EBB, at least one of Statement Basis or Statement Basis Code Name is required. [Code Values = Estimated, Actual, Revision]
19.	Current Month Imbalance	The current month imbalance, which is the difference between current month entitlement (#16) and production delivery (#17)	R	Imbalance Quantity	The imbalance quantity for the current period.	M	M	
20.	Cumulative Imbalance	The cumulative imbalance calculated by adding the prior month cumulative imbalance to the current month imbalance (#19)	R	Ending Imbalance Quantity	The imbalance quantity at the end of the period for an interest owner delivered to a Transportation Service Provider.	M	M	

COPAS Data Elements				NAESB Data Elements				
Data Elem. No.	Business Name	Definition	Usage	Business Name	Definition	EBB Usage	EDI Usage	Condition
21.	Total All Deliveries	The total of all quantities delivered to the transporter or used off-lease from the facility (Required if a manual report)	C	Total Production Deliveries	The total of all production deliveries made to a specified Transportation Service Provider from a given location.	M	M	
22.	Grand Total All Transporters	The total of all quantities delivered to all transporters or used off-lease from the facility (Required if a manual report)	C	Grand Total Production Deliveries	The total of all production deliveries made to all Transportation Service Providers from a given location.	M	M	
OWNER IMBALANCE SUMMARY:		This information is needed to aggregate imbalance status by Operator/taking owner when he utilizes more than one transporter.						
	NONE			Beginning Imbalance Quantity	The imbalance quantity at the beginning of the period for an interest owner delivered to a Transportation Service Provider.	M	M	

COPAS Data Elements				NAESB Data Elements				
Data Elem. No.	Business Name	Definition	Usage	Business Name	Definition	EBB Usage	EDI Usage	Condition
23.	Prior Cumulative	The quantity of cumulative imbalance from the previous month's report (Required if a manual report)	C	Cumulative Beginning Imbalance Quantity	The sum of the Beginning Imbalance Quantity for an interest owner delivered to all Transportation Service Providers.	M	M	
24.	Current Month	The total of all current month imbalance quantities for each owner/Operator (Not required if there is only one transporter.)	C	Cumulative Imbalance Quantity	The sum of the Imbalance Quantity for the current period for an interest owner delivered to all Transportation Service Providers.	M	M	
25.	Prior Period Adjustments	Adjustments included in the cumulative imbalance quantities in this report (Required when cumulative imbalance from previous report plus current month imbalance does not equal cumulative imbalance on this report. Each prior period adjustment should be supported by an accompanying revised statement for the applicable period.)	C	Cumulative Prior Period Adjustment	Adjustment(s) included in the Cumulative Ending Imbalance Quantity in this report.	M	M	Default value is zero.

COPAS Data Elements				NAESB Data Elements				
Data Elem. No.	Business Name	Definition	Usage	Business Name	Definition	EBB Usage	EDI Usage	Condition
26.	Cumulative	The sum of all cumulative imbalance quantities for each owner/Operator (Not required if there is only one transporter.)	C	Cumulative Ending Imbalance Quantity	The sum of the Cumulative Beginning Imbalance Quantity, the Cumulative Imbalance Quantity and the Cumulative Prior Period Adjustment Quantity for an interest owner delivered to all Transportation Service Providers.	M	M	
NOTES:		Negative indicates that the imbalance is due (owed) to the Operator/producer.						

* Indicates Common Code

COPAS Usages:

- C = Conditional
- R = Required

NAESB Usages:

- BC = Business conditional - the data element is based on current variations in business practice. The business practice will be described herein, with an example. Over time, NAESB WGQ expects that as business practices are standardized, elements will move out of this category. Business Conditional elements which are not supported/required by the receiver will be acknowledged in the response document with a warning message code indicating that the data elements was ignored by the receiver.
- C = Conditional - the presence of data in a field is determined by the presence or lack of data in another field within the transmittal or related data sets.
- M = Mandatory - the data element (information) must be supplied in the transaction.

MA = Mutually agreeable - the data element is mutually agreed to between trading partners. It must be presented to GISB for technical implementation. It does not, by its definition, create a NAESB WGQ standard business practice. Usage of this element in no way can be mandated for inclusion by either trading partner in order to achieve a level of service.

SO = Sender's option - this element is optional for the sender to send and, if sent, the receiver should receive and process.

SAMPLE PAPER TRANSACTION

See following:

PRODUCER/PRODUCER GAS IMBALANCE STATEMENT
FOR THE MONTH OF: April 2000
Statement Recipient: Producer B

Preparer Name:	<u> Producer A </u>	Preparer Contact Name:	<u> Jane Doe </u>
Location:	<u> XYZ </u>	Preparer Contact Phone Number:	<u> (713) 555-1212 </u>
Location Name:	<u> Platform A </u>	Unit of Measure:	<u> MMBTU </u>
Location Operator Name:	<u> Operator A </u>	Reporting Pressure Base:	<u> 14.73 PSIA </u>
Statement Date/Time:	<u> June 15, 2000 </u>	All quantities are reported on a dry basis.	

(13) <u>TSP</u>	(14) <u>Interest Owner</u>	(15) <u>Interest Owner %</u>	(16) <u>Beg. Imbal Quantity</u>	(17) <u>Entitlement Quantity</u>	(17) <u>Production Delivery</u>	(18) <u>Statement Basis</u>	(19) <u>Imbalance Quantity</u>	(20) <u>Ending Imbalance Quantity</u>
Pipeline A	Producer A	.4167	72,497	145,845	203,315	Act.	57,470	129,967
	Producer B	.3125	(109,371)	109,375	0	Act.	(109,375)	(218,746)
	Producer C	.1041	36,874	36,435	73,315	Act.	36,880	73,754
	MMS RIK	.1667	0	58,345	73,370	Act.	15,025	15,025
Total Pipeline A		1.0000	0	350,000	350,000 (21)		0	0
Pipeline Z	Producer A	.4167	0	42	80	Act.	38	38
	Producer B	.3125	0	31	0	Act.	(31)	(31)
	Producer C	.1041	(500)	10	20	Act.	10	(490)
	MMS RIK	.1667	500	17	0	Act.	(17)	483
Total Pipeline Z		1.0000	0	100	100 (21)		0	0
Grand Total All TSPs			0	350,100	350,100 (22)		0	0

Interest Owner Imbalance Summary

(14) <u>Interest Owner</u>	(23) Cum <u>Beg. Imbal. Quantity</u>	(24) Cum <u>Imbalance Quantity</u>	(25) Cum <u>Prior Period Adjustment</u>	(26) Cum <u>Ending Imbal. Quantity</u>
Producer A	72,497	57,508	10	130,015
Producer B	(109,371)	(109,406)	(5)	(218,782)
Producer C	36,374	36,890	(10)	73,754
MMS RIK	500	15,008	5	15,013
Grand Total	0	0	0	0

Note: Negative indicates that the imbalance is due (owed) to the Interest Owner.

DATA DICTIONARY

Standard 2.4.z

Business Name (Abbreviation)	Definition	EBB Usage	EDI/FF Usage	Condition
Beginning Imbalance Quantity (Beg Imb Qty)	The imbalance quantity at the beginning of the period for an interest owner delivered to a Transportation Service Provider.	M	M	
Cumulative Beginning Imbalance Quantity (Cum Beg Imb Qty)	The sum of the Beginning Imbalance Quantity for an interest owner delivered to all Transportation Service Providers.	M	M	
Cumulative Ending Imbalance Quantity (Cum End Imb Qty)	The sum of the Cumulative Beginning Imbalance Quantity, the Cumulative Imbalance Quantity and the Cumulative Prior Period Adjustment Quantity for an interest owner delivered to all Transportation Service Providers.	M	M	
Cumulative Imbalance Quantity (Cum Imb Qty)	The sum of the Imbalance Quantity for the current period for an interest owner delivered to all Transportation Service Providers.	M	M	
Cumulative Prior Period Adjustment (Cum Prior Per Adj)	Adjustment(s) included in the Cumulative Ending Imbalance Quantity in this report.	M	M	Default value is zero.

Business Name (Abbreviation)	Definition	EBB Usage	EDI/FF Usage	Condition
Ending Imbalance Quantity (End Imb Qty)	The imbalance quantity at the end of the period for an interest owner delivered to a Transportation Service Provider.	M	M	
Entitlement Quantity (Ent Qty)	The quantity of gas each interest owner is entitled to take of the Grand Total – All Transportation Service Providers for a given Transportation Service Provider.	M	M	
Grand Total Production Deliveries (Grnd Tot Prod Del)	The total of all production deliveries made to all Transportation Service Providers from a given location.	M	M	
Imbalance Period (Imb Per)	The period during which the imbalance occurred or the cumulative imbalance is reported.	M	M	
Imbalance Quantity (Imb Qty)	The imbalance quantity for the current period.	M	M	
Interest Owner Data	The entity with ownership interest in the gas.			
Interest Owner * 4 (Int Own)		C	C	At least one of Interest Owner or Interest Owner Proprietary Code is mandatory.
Interest Owner Name (Int Own Name)		M	nu	

Business Name (Abbreviation)	Definition	EBB Usage	EDI/FF Usage	Condition
Interest Owner Proprietary Code (Int Own Prop)		C	C	At least one of Interest Owner or Interest Owner Proprietary Code is mandatory.
Interest Owner Percentage (Int Own Pct)	Percentage of the gas owned by the Interest Owner dedicated to a specified Transportation Service Provider.	M	M	
Location Data	Unique identification of a point.			
Location* (Loc)		M	M	
Location Name (Loc Name)		M	nu	
Location Proprietary Code (Loc Prop)		C	C	Mandatory when Location is not present. .
Location Operator Data	The party recognized as the operator of record for the location.			
Location Operator * 4 (Loc Oper)		M	M	
Location Operator Name (Loc Oper Name)		M	nu	
Location Operator Proprietary Code (Loc Oper Prop)		C	C	Mandatory when Location Operator is not present.
Preparer Contact E-mail Address (Prep E-mail)	The e-mail address of the contact person for questions regarding the statement information.	SO	SO	

Business Name (Abbreviation)	Definition	EBB Usage	EDI/FF Usage	Condition
Preparer Contact Fax Number (Prep Fax)	The fax number of the contact person for questions regarding the statement information.	SO	SO	
Preparer Contact Name (Prep Contact)	The name of the contact person for questions regarding the statement information.	M	M	
Preparer Contact Phone Number (Prep Phone)	The phone number of the contact person for questions regarding the statement information.	M	M	
Preparer Data	The name of the business party preparing the report			
Preparer ID * 4 (Prep ID)		M	M	
Preparer ID Proprietary Code (Prep ID Prop)		C	C	Mandatory when Preparer ID is not present.
Preparer Name (Prep Name)		M	nu	
Production Delivery (Prod Del)	The quantity of gas delivered to a location for the account of each Interest Owner based on the Location Operator's allocation statement.	M	M	
Reporting Pressure Base (Rpt Press Base)	Pressure base used in reporting volume in MCFs.	C	C	Mandatory when Unit of Measure for associated quantity is 'Thousand Cubic Feet'.

Business Name (Abbreviation)	Definition	EBB Usage	EDI/FF Usage	Condition
Statement Basis Data	Code used to identify statement quantities as estimate, actual or revision. Default value is actual.			
Statement Basis (Stmnt Basis)		C	M	For EBB, at least one of Statement Basis or Statement Basis Code Name is required.
Statement Basis Code Name (Stmnt Basis Name)		C	nu	For EBB, at least one of Statement Basis or Statement Basis Code Name is required.
Statement Date/Time (Stmnt D/T)	Date and time the statement was produced.	M	M	
Statement Recipient Data	The intended user of the statement.			
Statement Recipient ID * 4 (Recipient)		M	M	
Statement Recipient ID Proprietary Code (Recipient Prop)		C	C	Mandatory when Statement Recipient ID is not present.
Statement Recipient Name (Recipient Name)		M	nu	
Total Production Deliveries (Tot Prod Del)	The total of all production deliveries made to a specified Transportation Service Provider from a given location.	M	M	
Transportation Service Provider Data	A code which uniquely identifies the transportation service provider.			

Business Name (Abbreviation)	Definition	EBB Usage	EDI/FF Usage	Condition
Transportation Service Provider * ⁴ (TSP)		M	M	
Transportation Service Provider Name (TSP Name)		M	nu	
Transportation Service Provider Proprietary Code (TSP Prop)		C	C	Mandatory when Transportation Service Provider is not present.
Unit of Measure (U/Meas)	Specifies the unit or basis for measurement for the corresponding measurement value.	M	M	

RELEVANT FOOTNOTES

* Indicates Common Code

⁴ Refer to NAESB Standard No. [S4 – from R97058B]

CODE VALUES DICTIONARY

Statement Basis

Code Value Description	Code Value Definition	Code Value
Actual	Quantity based upon the best available data.	A
Estimate	Quantity based upon the best available data, which is recognized as preliminary.	E
Revision	Change to a quantity based upon a prior period adjustment.	R

Unit of Measure

Code Value Description	Code Value Definition	Code Value
Gigacalories	[no definition necessary]	G8
Gigajoules	[no definition necessary]	GV
Kilopascal	[no definition necessary]	KQ
MMBTU	[no definition necessary]	BZ
PSIA	[no definition necessary]	80
PSIG	[no definition necessary]	64
Thousand Cubic Feet	[no definition necessary]	TZ

DATA ELEMENT CROSS REFERENCE TO ASC X12

Usage Codes: M - Mandatory, C - Conditional, SO – Sender's Option, BC - Business Conditional, MA - Mutually Agreeable, nu - not used

Heading:

Segment	Usage	Segment Name/NAESB Data Element Name
ST	M	Transaction Set Header segment
BIG	M	Beginning Segment for Invoice (Producer Imbalance) segment
REF	M	Statement Basis
DTM	M	Imbalance Period
DTM	M	Statement Date/Time
N1	M	Statement Recipient ID/Statement Recipient ID Proprietary Code
N1	M	Preparer ID/Preparer ID Proprietary Code
PER	M	Preparer Contact Name
	M	Preparer Contact Phone Number
	SO	Preparer Contact Fax Number
	SO	Preparer Contact E-mail Address

Detail:

Segment	Usage	Segment Name/NAESB Data Element Name
HL	M	Hierarchical Level segment (Location)
IT1	M	Baseline Item Data segment
MEA	C	Reporting Pressure Base
	C	Unit of Measure
QTY	M	Grand Total Production Deliveries
	M	Unit of Measure
NM1	M	Location Operator/Location Operator Proprietary Code
LCD	M	Location/Location Proprietary Code

Sub-detail:

Segment	Usage	Segment Name/NAESB Data Element Name
HL	M	Hierarchical Level segment (Transportation Service Provider)
IT1	M	Baseline Item Data segment
QTY	M	Total Production Deliveries
NM1	M	Transportation Service Provider/ Transportation Service Provider Proprietary Code

Sub-sub-detail:

Segment	Usage	Segment Name/NAESB Data Element Name
HL	M	Hierarchical Level segment (Interest Owner Quantities)
IT1	M	Baseline Item Data segment
MEA	M	Interest Owner Percentage
QTY	M	Beginning Imbalance Quantity
QTY	M	Entitlement Quantity
QTY	M	Production Delivery
QTY	M	Imbalance Quantity
QTY	M	Ending Imbalance Quantity
NM1	M	Interest Owner/Interest Owner Proprietary Code

Sub-detail:

Segment	Usage	Segment Name/NAESB Data Element Name
HL	M	Hierarchical Level segment (Interest Owner Cumulative Quantities)
IT1	M	Baseline Item Data segment
QTY	M	Cumulative Beginning Imbalance Quantity
QTY	M	Cumulative Imbalance Quantity
QTY	M	Cumulative Prior Period Adjustment
QTY	M	Cumulative Ending Imbalance Quantity
NM1	M	Interest Owner/Interest Owner Proprietary Code

Summary:

Segment	Usage	Segment Name/NAESB Data Element Name
TDS	M	Total Monetary Value Summary segment
SE	M	Transaction Set Trailer

SAMPLE ASC X12 TRANSACTION

ST*811*0001
BIG*20000615*1****F7
REF*V0*A
DTM*102****DT*200006151507
DTM*582****CM*200004
N1*40**1*123456789
N1*41**1*987654321
PER*IC*Jane Doe*TE*7135551212

HL*34-134**
IT1*1
MEA**PU*14.73*80
QTY*TO*350100*BZ
NM1*OP*3*****1*246808642
LCD**LCN***SV*XYZ

HL*19-1*34-1*19
IT1*1
QTY*TT*350000
NM1*SJ*3*****SV*Pipeline A

HL*PP-1*19-1*PP
IT1*1
MEA**OX*.4167
QTY*B9*72497
QTY*BP*129967
QTY*BX*57470
QTY*BY*203315
QTY*BZ*145845
NM1*HA*3*****SV*Producer A

IT1*2
MEA**OX*.3125
QTY*B9*-109371
QTY*BP*-218746
QTY*BX*-109375
QTY*BY*0
QTY*BZ*109375
NM1*HA*3*****SV*Producer B

IT1*3
MEA**OX*.1041
QTY*B9*36874
QTY*BP*73754
QTY*BX*36880
QTY*BY*73315
QTY*BZ*36435
NM1*HA*3*****SV*Producer C

IT1*4
MEA**OX*.1667
QTY*B9*0
QTY*BP*15025
QTY*BX*15025
QTY*BY*73370
QTY*BZ*58345
NM1*HA*3*****SV*MMS RIK

HL*19-2*34-1*19

IT1*1

QTY*TT*100

NM1*SJ*3*****SV*Pipeline Z

HL*PP-1*19-2*PP

IT1*1

MEA**OX*.4167

QTY*B9*0

QTY*BP*38

QTY*BX*38

QTY*BY*80

QTY*BZ*42

NM1*HA*3*****SV*Producer A

IT1*2

MEA**OX*.3125

QTY*B9*0

QTY*BP*-.31

QTY*BX*-.31

QTY*BY*0

QTY*BZ*31

NM1*HA*3*****SV*Producer B

IT1*3

MEA**OX*.1041

QTY*B9*-500

QTY*BP*-490

QTY*BX*10

QTY*BY*20

QTY*BZ*10

NM1*HA*3*****SV*Producer C

IT1*4

MEA**OX*.1667

QTY*B9*500

QTY*BP*483

QTY*BX*-17

QTY*BY*0

QTY*BZ*17

NM1*HA*3*****SV*MMS RIK

HL*R-1*34-1*R*0

IT1*1

QTY*BS*72497

QTY*BT*57508

QTY*BU*10

QTY*BV*130015

NM1*HA*3*****SV*Producer A

IT1*2

QTY*BS*-109371

QTY*BT*-109406

QTY*BU*-5

QTY*BV*-218782

NM1*HA*3*****SV*Producer B

IT1*3

QTY*BS*36374

QTY*BT*36890

QTY*BU*-10
QTY*BV*73754
NM1*HA*3*****SV*Producer C
IT1*4
QTY*BS*500
QTY*BT*15008
QTY*BU*5
QTY*BV*15013
NM1*HA*3*****SV*MMS RIK
TDS*0
SE*115*0001



811 Consolidated Service Invoice/Statement

Functional Group ID=**CI**

Heading:

	<u>Pos. No.</u>	<u>Seg. ID</u>	<u>Name</u>	<u>Req. Des.</u>	<u>Max.Use</u>	<u>Loop Repeat</u>
Must Use	0100	ST	Transaction Set Header	M	1	
Must Use	0200	BIG	Beginning Segment for Invoice	M	1	
Must Use	0500	REF	Reference Information	O	>1	
Must Use	0800	DTM	Date/Time Reference	O	10	
LOOP ID - N1						>1
Must Use	1000	N1	Party Identification	O	1	
Must Use	1500	PER	Administrative Communications Contact	O	3	

Detail:

	<u>Pos. No.</u>	<u>Seg. ID</u>	<u>Name</u>	<u>Req. Des.</u>	<u>Max.Use</u>	<u>Loop Repeat</u>
LOOP ID - HL						>1
Must Use	0100	HL	Hierarchical Level (Location level loop)	M	1	
LOOP ID - IT1						1
Must Use	2100	IT1	Baseline Item Data (Invoice)	O	1	
	2350	MEA	Measurements	O	1	
LOOP ID - QTY						1
Must Use	2900	QTY	Quantity Information	O	1	
LOOP ID - NM1						1
Must Use	3400	NM1	Individual or Organizational Name	O	1	
Must Use	3890	LCD	Place/Location Description	O	1	
LOOP ID - HL						>1
Must Use	7600	HL	Hierarchical Level (Transportation Service Provider level loop)	O	1	
LOOP ID - IT1						1
Must Use	7700	IT1	Baseline Item Data (Invoice)	O	1	
LOOP ID - QTY						1
Must Use	7800	QTY	Quantity Information	O	1	
LOOP ID - NM1						1
Must Use	7900	NM1	Individual or Organizational Name	O	1	
LOOP ID - HL						>1
Must Use	8000	HL	Hierarchical Level (Interest Owner Quantities level loop)	O	1	
LOOP ID - IT1						999999
Must Use	8100	IT1	Baseline Item Data (Invoice)	O	1	

NAESB WGQ Producer Imbalance Statement

Recommendation Attachment R96056

Must Use	8200	MEA	Measurements	O	1	
			LOOP ID - QTY			>1
Must Use	8300	QTY	Quantity Information	O	1	
			LOOP ID - NM1			1
Must Use	8400	NM1	Individual or Organizational Name	O	1	
			LOOP ID - HL			>1
Must Use	8500	HL	Hierarchical Level (Interest Owner Cumulative Quantities level loop)	O	1	
			LOOP ID - IT1			1
Must Use	8600	IT1	Baseline Item Data (Invoice)	O	1	
			LOOP ID - QTY			>1
Must Use	8700	QTY	Quantity Information	O	1	
			LOOP ID - NM1			1
Must Use	8800	NM1	Individual or Organizational Name	O	1	

Summary:

	<u>Pos. No.</u>	<u>Seg. ID</u>	<u>Name</u>	<u>Req. Des.</u>	<u>Max.Use</u>	<u>Loop Repeat</u>
Must Use	0100	TDS	Total Monetary Value Summary	M	1	
Must Use	1200	SE	Transaction Set Trailer	M	1	

Segment: **ST** Transaction Set Header
Position: 0100
Loop:
Level: Heading
Usage: Mandatory
Max Use: 1

Data Element Summary

	Ref.	Data	Name	Attributes
	Des.	Element		
Must Use	ST01	143	Transaction Set Identifier Code	M 1 ID 3/3
			811 Consolidated Service Invoice/Statement	
Must Use	ST02	329	Transaction Set Control Number	M 1 AN 4/9

Segment: **BIG** Beginning Segment for Invoice
 Position: 0200
 Loop:
 Level: Heading
 Usage: Mandatory
 Max Use: 1

Data Element Summary

	<u>Ref.</u> <u>Des.</u>	<u>Data</u> <u>Element</u>	<u>Name</u>	<u>Attributes</u>
Must Use	BIG01	373	Date <i>The date the statement was generated.</i>	M 1 DT 8/8
Must Use	BIG02	76	Invoice Number <i>The statement number assigned by the statement preparer.</i>	M 1 AN 1/22
Must Use	BIG07	640	Transaction Type Code F7 Producer Imbalance	O 1 ID 2/2

Segment: **REF** Reference Information
Position: 0500
Loop:
Level: Heading
Usage: Optional (Must Use)
Max Use: >1
Notes: *For NAESB WGQ, this segment is mandatory.*

Data Element Summary

	<u>Ref.</u> <u>Des.</u>	<u>Data</u> <u>Element</u>	<u>Name</u>	<u>Attributes</u>
Must Use	REF01	128	Reference Identification Qualifier V0 Version	M 1 ID 2/3
Must Use	REF02	127	Reference Identification Statement Basis A Actual E Estimate R Revision	X 1 AN 1/50

Segment: **DTM** Date/Time Reference
Position: 0800
Loop:
Level: Heading
Usage: Optional (Must Use)
Max Use: 10
Notes: For NAESB WGQ, this segment is mandatory and should occur once for each value in the DTM01 element.

Data Element Summary

	Ref.	Data	Name	Attributes
	Des.	Element		
Must Use	DTM01	374	Date/Time Qualifier <i>Refer to "DTM Segments (Heading)" table for usage and values.</i>	M 1 ID 3/3
Must Use	DTM05	1250	Date Time Period Format Qualifier <i>Refer to "DTM Segments (Heading)" table for usage and values.</i>	X 1 ID 2/3
			CM Date in Format CCYYMM	
			DT Date and Time Expressed in Format CCYYMMDDHHMM	
Must Use	DTM06	1251	Date Time Period <i>Refer to "DTM Segments (Heading)" table for usage and values.</i>	X 1 AN 1/35
			<i>Imbalance Period, Statement Date/Time</i>	

Segment: **N1 Party Identification**
Position: 1000
Loop: N1 Optional (Must Use)
Level: Heading
Usage: Optional (Must Use)
Max Use: 1
Notes: *For NAESB WGQ, this segment is mandatory and should occur once for each value in the N101 element.*

Data Element Summary

	<u>Ref. Des.</u>	<u>Data Element</u>	<u>Name</u>	<u>Attributes</u>
Must Use	N101	98	Entity Identifier Code 40 Receiver <i>Statement Recipient ID</i> 41 Submitter <i>Preparer ID</i>	M 1 ID 2/3
Must Use	N103	66	Identification Code Qualifier <i>Parties should mutually agree to use the Transportation Service Provider's proprietary entity code when the D-U-N-S® Number is not available.</i> 1 D-U-N-S Number, Dun & Bradstreet <i>For NAESB WGQ, this code value may only be used when sending the Statement Recipient ID or Preparer ID.</i> SV Service Provider Number <i>For NAESB WGQ, this code value may only be used when sending the Statement Recipient ID Proprietary Code or Preparer ID Proprietary Code.</i>	X 1 ID 1/2
Must Use	N104	67	Identification Code <i>Statement Recipient ID/Statement Recipient ID Proprietary Code, Preparer ID/Preparer ID Proprietary Code</i> <i>The data element maximum length indicated is reduced from that which is specified in the ASC X12 standards.</i>	X 1 AN 2/17

Segment: PER Administrative Communications Contact

Position: 1500

Loop: N1 Optional (Must Use)

Level: Heading

Usage: Optional (Must Use)

Max Use: 3

Notes: For NAESB WGQ, this segment is mandatory. It may only be sent with the Preparer ID N1 loop (N101 = '41').

Data Element Summary

	<u>Ref.</u>	<u>Data</u>	<u>Attributes</u>
	<u>Des.</u>	<u>Element Name</u>	
Must Use	PER01	366 Contact Function Code IC Information Contact	M 1 ID 2/2
Must Use	PER02	93 Name Preparer Contact Name <i>The data element maximum length indicated is reduced from that which is specified in the ASC X12 standards.</i>	O 1 AN 1/35
Must Use	PER03	365 Communication Number Qualifier TE Telephone	X 1 ID 2/2
Must Use	PER04	364 Communication Number Preparer Contact Phone Number <i>The data element maximum length indicated is reduced from that which is specified in the ASC X12 standards.</i>	X 1 AN 1/80
	PER05	365 Communication Number Qualifier FX Facsimile	X 1 ID 2/2
	PER06	364 Communication Number Preparer Contact Fax Number <i>For NAESB WGQ, this element is sender's option.</i>	X 1 AN 1/80
	PER07	365 Communication Number Qualifier EM Electronic Mail	X 1 ID 2/2
	PER08	364 Communication Number Preparer Contact E-mail Address <i>The data element maximum length indicated is reduced from that which is specified in the ASC X12 standards.</i>	X 1 AN 1/80

Segment: **HL** Hierarchical Level (Location level loop)
Position: 0100
Loop: HL Mandatory
Level: Detail
Usage: Mandatory
Max Use: 1
Notes: *Location level loop*

Data Element Summary

	<u>Ref.</u>	<u>Data</u>	<u>Attributes</u>
	<u>Des.</u>	<u>Element</u> <u>Name</u>	
Must Use	HL01	628 Hierarchical ID Number <i>sequential line item number</i>	M 1 AN 1/12
Must Use	HL03	735 Hierarchical Level Code 34 Location Record <i>Location level loop</i>	M 1 ID 1/2

Segment: **IT1** **Baseline Item Data (Invoice)**
Position: 2100
Loop: IT1 Optional (Must Use)
Level: Detail
Usage: Optional (Must Use)
Max Use: 1
Notes: *For NAESB WGQ, this segment is mandatory.*

Data Element Summary

	<u>Ref.</u>	<u>Data</u>		<u>Attributes</u>
	<u>Des.</u>	<u>Element</u>	<u>Name</u>	
Must Use	IT101	350	Assigned Identification	O 1 AN 1/20

Segment: **MEA** Measurements
Position: 2350
Loop: IT1 Optional (Must Use)
Level: Detail
Usage: Optional
Max Use: 1
Notes: *For NAESB WGQ, this segment is conditional.*

Data Element Summary

	Ref.	Data		Attributes
	<u>Des.</u>	<u>Element</u>	<u>Name</u>	
Must Use	MEA02	738	Measurement Qualifier	O 1 ID 1/3
			PU Pressure Base	
Must Use	MEA03	739	Measurement Value	X 1 R 1/20
			<i>Reporting Pressure Base</i>	
Must Use	MEA04	C001	Composite Unit of Measure	X 1
Must Use	C00101	355	Unit or Basis for Measurement Code	M ID 2/2
			<i>Unit of Measure</i>	
			64 Pounds Per Square Inch Gauge	
			80 Pounds Per Square Inch Absolute	
			KQ Kilopascal	

Segment: **QTY** **Quantity Information**
Position: 2900
Loop: QTY Optional (Must Use)
Level: Detail
Usage: Optional (Must Use)
Max Use: 1
Notes: *For NAESB WGQ, this segment is mandatory.*

Data Element Summary

	Ref.	Data		Attributes
	Des.	Element	Name	
Must Use	QTY01	673	Quantity Qualifier	M 1 ID 2/2
			TO Total	
Must Use	QTY02	380	Quantity	X 1 R 1/15
			<i>Grand Total Production Deliveries</i>	
Must Use	QTY03	C001	Composite Unit of Measure	O 1
Must Use	C00101	355	Unit or Basis for Measurement Code	M ID 2/2
			<i>Unit of Measure</i>	
			BZ Million BTU's	
			G8 Gigacalories	
			GV Gigajoules	
			TZ Thousand Cubic Feet	

Segment: **NM1** Individual or Organizational Name
Position: 3400
Loop: NM1 Optional (Must Use)
Level: Detail
Usage: Optional (Must Use)
Max Use: 1
Notes: For NAESB WGQ, this segment is mandatory.

Data Element Summary

	Ref.	Data	Attributes					
			Des.	Element	Name	M	1	ID
Must Use	NM101	98	Entity Identifier Code	M	1	ID 2/3		
			OP Operator of property or unit					
Must Use	NM102	1065	Entity Type Qualifier	M	1	ID 1/1		
			3 Unknown					
Must Use	NM108	66	Identification Code Qualifier	X	1	ID 1/2		
			<i>Parties should mutually agree to use the Transportation Service Provider's proprietary entity code when the D-U-N-S® Number is not available.</i>					
			1 D-U-N-S Number, Dun & Bradstreet					
			<i>For NAESB WGQ, this code value may only be used when sending the Location Operator.</i>					
			SV Service Provider Number					
			<i>For NAESB WGQ, this code value may only be used when sending the Location Operator Proprietary Code.</i>					
Must Use	NM109	67	Identification Code	X	1	AN 2/17		
			<i>Location Operator/Location Operator Proprietary Code</i>					

The data element maximum length indicated is reduced from that which is specified in the ASC X12 standards.

Segment: **LCD** **Place/Location Description**
Position: 3890
Loop: NM1 Optional (Must Use)
Level: Detail
Usage: Optional (Must Use)
Max Use: 1
Notes: *For NAESB WGQ, this segment is mandatory.*

Data Element Summary

	<u>Ref.</u>	<u>Data</u>	<u>Name</u>	<u>Attributes</u>
	<u>Des.</u>	<u>Element</u>		
Must Use	LCD02	98	Entity Identifier Code LCN Gas Nomination Location	O 1 ID 2/3
Must Use	LCD05	66	Identification Code Qualifier <i>When a Transportation Service Provider's proprietary location code is employed pursuant to this standard, the parties agree that nominations, confirmations, scheduled quantities, and capacity release documents employing such code should be for one gas day at a time, and used only until there is a verified common code for the point associated with the proprietary location code. This would include daily nominations over a weekend. Within two months following the availability of the location the parties should employ the common code and no longer employ the proprietary code for identifying such location in the datasets related to the identified standards.</i> DR Gas Industry Standards Board (GISB) Data Reference Number (DRN) <i>For NAESB WGQ, this code value may only be used when sending the Location.</i> SV Service Provider Number <i>For NAESB WGQ, this code value may only be used when sending the Location Proprietary Code.</i>	X 1 ID 1/2
Must Use	LCD06	67	Identification Code Location/Location Proprietary Code <i>The data element maximum length indicated is reduced from that which is specified in the ASC X12 standards.</i>	X 1 AN 2/17

Segment: **HL** Hierarchical Level (Transportation Service Provider level loop)
Position: 7600
Loop: HL Optional (Must Use)
Level: Detail
Usage: Optional (Must Use)
Max Use: 1
Notes: For NAESB WGQ, this segment is mandatory.

Data Element Summary

	Ref.	Data	Attributes
	Des.	Element Name	
Must Use	HL01	628 Hierarchical ID Number <i>sequential line item number</i>	M 1 AN 1/12
Must Use	HL02	734 Hierarchical Parent ID Number <i>This element contains the sequential line item number (HL01) of the Location level loop (HL03 = '34') to which this detail loop is subordinate.</i>	O 1 AN 1/12
Must Use	HL03	735 Hierarchical Level Code 19 Provider of Service <i>Transportation Service Provider level loop</i>	M 1 ID 1/2

Segment: **IT1** **Baseline Item Data (Invoice)**
Position: 7700
Loop: IT1 Optional (Must Use)
Level: Detail
Usage: Optional (Must Use)
Max Use: 1
Notes: *For NAESB WGQ, this segment is mandatory.*

Data Element Summary

	<u>Ref.</u>	<u>Data</u>		<u>Attributes</u>
	<u>Des.</u>	<u>Element</u>	<u>Name</u>	
Must Use	IT101	350	Assigned Identification	O 1 AN 1/20

Segment: **QTY** **Quantity Information**
Position: 7800
Loop: QTY Optional (Must Use)
Level: Detail
Usage: Optional (Must Use)
Max Use: 1
Notes: *For NAESB WGQ, this segment is mandatory.*

Data Element Summary

	<u>Ref.</u>	<u>Data</u>	<u>Name</u>	<u>Attributes</u>
	<u>Des.</u>	<u>Element</u>		
Must Use	QTY01	673	Quantity Qualifier	M 1 ID 2/2
			TT Total Production Volume	
Must Use	QTY02	380	Quantity	X 1 R 1/15
			Total Production Deliveries	

Segment: **NM1** Individual or Organizational Name
Position: 7900
Loop: NM1 Optional (Must Use)
Level: Detail
Usage: Optional (Must Use)
Max Use: 1
Notes: For NAESB WGQ, this segment is mandatory.

Data Element Summary

	<u>Ref.</u>	<u>Data</u>	<u>Attributes</u>
	<u>Des.</u>	<u>Element</u> <u>Name</u>	
Must Use	NM101	98 Entity Identifier Code SJ Service Provider	M 1 ID 2/3
Must Use	NM102	1065 Entity Type Qualifier 3 Unknown	M 1 ID 1/1
Must Use	NM108	66 Identification Code Qualifier <i>Parties should mutually agree to use the Transportation Service Provider's proprietary entity code when the D-U-N-S® Number is not available.</i> 1 D-U-N-S Number, Dun & Bradstreet <i>For NAESB WGQ, this code value may only be used when sending the Transportation Service Provider.</i> SV Service Provider Number <i>For NAESB WGQ, this code value may only be used when sending the Transportation Service Provider Proprietary Code.</i>	X 1 ID 1/2
Must Use	NM109	67 Identification Code <i>Transportation Service Provider/Transportation Service Provider Proprietary Code</i> <i>The data element maximum length indicated is reduced from that which is specified in the ASC X12 standards.</i>	X 1 AN 2/17

Segment: **HL Hierarchical Level (Interest Owner Quantities level loop)**
Position: 8000
Loop: HL Optional (Must Use)
Level: Detail
Usage: Optional (Must Use)
Max Use: 1
Notes: *For NAESB WGQ, this segment is mandatory.*

Data Element Summary

	Ref.	Data		Attributes
	Des.	Element	Name	
Must Use	HL01	628	Hierarchical ID Number <i>sequential line item number</i>	M 1 AN 1/12
Must Use	HL02	734	Hierarchical Parent ID Number <i>This element contains the sequential line item number (HL01) of the Transportation Service Provider level loop (HL03 = '19') to which this detail loop is subordinate.</i>	O 1 AN 1/12
Must Use	HL03	735	Hierarchical Level Code PP Related Parties <i>Interest Owner Quantities level loop</i>	M 1 ID 1/2

Segment: **IT1** **Baseline Item Data (Invoice)**
Position: 8100
Loop: IT1 Optional (Must Use)
Level: Detail
Usage: Optional (Must Use)
Max Use: 1
Notes: *For NAESB WGQ, this segment is mandatory.*

Data Element Summary

	<u>Ref.</u>	<u>Data</u>		<u>Attributes</u>
	<u>Des.</u>	<u>Element</u>	<u>Name</u>	
Must Use	IT101	350	Assigned Identification	O 1 AN 1/20

Segment: **MEA** Measurements
Position: 8200
Loop: IT1 Optional (Must Use)
Level: Detail
Usage: Optional (Must Use)
Max Use: 1
Notes: *For NAESB WGQ, this segment is mandatory.*

Data Element Summary

	<u>Ref.</u>	<u>Data</u>	<u>Attributes</u>
	<u>Des.</u>	<u>Element</u> <u>Name</u>	
Must Use	MEA02	738 Measurement Qualifier OX Ownership Share	O 1 ID 1/3
Must Use	MEA03	739 Measurement Value <i>Interest Owner Percentage</i>	X 1 R 1/20

Segment: **QTY** **Quantity Information**
Position: 8300
Loop: QTY Optional (Must Use)
Level: Detail
Usage: Optional (Must Use)
Max Use: 1
Notes: *For NAESB WGQ, this segment is mandatory and should occur once for each value in the QTY01 element.*

Data Element Summary

Ref.	Data			Attributes
<u>Des.</u>	<u>Element</u>	<u>Name</u>		
Must Use	QTY01	673	Quantity Qualifier	M 1 ID 2/2
		B9	Period Beginning Imbalance Quantity <i>Beginning Imbalance Quantity</i>	
		BP	Period Ending Imbalance Quantity <i>Ending Imbalance Quantity</i>	
		BX	Current Period Imbalance Quantity <i>Imbalance Quantity</i>	
		BY	Production Delivery Quantity <i>Production Delivery</i>	
		BZ	Entitlement Quantity <i>Entitlement Quantity</i>	
Must Use	QTY02	380	Quantity <i>Beginning Imbalance Quantity, Ending Imbalance Quantity, Imbalance Quantity, Production Delivery, Entitlement Quantity</i>	X 1 R 1/15

Segment: **NM1 Individual or Organizational Name**
Position: 8400
Loop: NM1 Optional (Must Use)
Level: Detail
Usage: Optional (Must Use)
Max Use: 1
Notes: *For NAESB WGQ, this segment is mandatory.*

Data Element Summary

	<u>Ref.</u>	<u>Data</u>	<u>Name</u>	<u>Attributes</u>
	<u>Des.</u>	<u>Element</u>		
Must Use	NM101	98	Entity Identifier Code HA Owner	M 1 ID 2/3
Must Use	NM102	1065	Entity Type Qualifier 3 Unknown	M 1 ID 1/1
Must Use	NM108	66	Identification Code Qualifier <i>Parties should mutually agree to use the Interest Owner's proprietary entity code when the D-U-N-S® Number is not available.</i> 1 D-U-N-S Number, Dun & Bradstreet <i>For NAESB WGQ, this code value may only be used when sending the Interest Owner.</i> SV Service Provider Number <i>For NAESB WGQ, this code value may only be used when sending the Interest Owner Proprietary Code.</i>	X 1 ID 1/2
Must Use	NM109	67	Identification Code <i>Interest Owner/Interest Owner Proprietary Code</i>	X 1 AN 2/17

The data element maximum length indicated is reduced from that which is specified in the ASC X12 standards.

Segment: **HL** Hierarchical Level (Interest Owner Cumulative Quantities level loop)
Position: 8500
Loop: HL Optional (Must Use)
Level: Detail
Usage: Optional (Must Use)
Max Use: 1
Notes: For NAESB WGQ, this segment is mandatory.

Data Element Summary

	Ref.	Data	Attributes
	Des.	Element Name	
Must Use	HL01	628 Hierarchical ID Number <i>sequential line item number</i>	M 1 AN 1/12
Must Use	HL02	734 Hierarchical Parent ID Number <i>This element contains the sequential line item number (HL01) of the Location level loop (HL03 = '34') to which this detail loop is subordinate.</i>	O 1 AN 1/12
Must Use	HL03	735 Hierarchical Level Code R Quantity <i>Interest Owner Cumulative Quantities level loop</i>	M 1 ID 1/2
Must Use	HL04	736 Hierarchical Child Code 0 No Subordinate HL Segment in This Hierarchical Structure.	O 1 ID 1/1

Segment: **IT1** **Baseline Item Data (Invoice)**
Position: 8600
Loop: IT1 Optional (Must Use)
Level: Detail
Usage: Optional (Must Use)
Max Use: 1
Notes: *For NAESB WGQ, this segment is mandatory.*

Data Element Summary

	<u>Ref.</u>	<u>Data</u>		<u>Attributes</u>
	<u>Des.</u>	<u>Element</u>	<u>Name</u>	
Must Use	IT101	350	Assigned Identification	O 1 AN 1/20

Segment: **QTY** **Quantity Information**
Position: 8700
Loop: QTY Optional (Must Use)
Level: Detail
Usage: Optional (Must Use)
Max Use: 1
Notes: *For NAESB WGQ, this segment is mandatory and should occur once for each value in the QTY01 element.*

Data Element Summary

Ref.	Data				<u>Attributes</u>
<u>Des.</u>	<u>Element</u>	<u>Name</u>			
Must Use	QTY01	673	Quantity Qualifier		M 1 ID 2/2
			BS	Cumulative Beginning Imbalance Quantity <i>Cumulative Beginning Imbalance Quantity</i>	
			BT	Cumulative Current Period Imbalance Quantity <i>Cumulative Imbalance Quantity</i>	
			BU	Cumulative Prior Period Adjustment <i>Cumulative Prior Period Adjustment</i>	
			BV	Cumulative Ending Imbalance Quantity <i>Cumulative Ending Imbalance Quantity</i>	
Must Use	QTY02	380	Quantity		X 1 R 1/15
				<i>Cumulative Beginning Imbalance Quantity, Cumulative Imbalance Quantity, Cumulative Prior Period Adjustment, Cumulative Ending Imbalance Quantity</i>	

Segment: **NM1** Individual or Organizational Name
Position: 8800
Loop: NM1 Optional (Must Use)
Level: Detail
Usage: Optional (Must Use)
Max Use: 1
Notes: For NAESB WGQ, this segment is mandatory.

Data Element Summary

	<u>Ref.</u>	<u>Data</u>	<u>Attributes</u>
	<u>Des.</u>	<u>Element</u> <u>Name</u>	
Must Use	NM101	98 Entity Identifier Code HA Owner	M 1 ID 2/3
Must Use	NM102	1065 Entity Type Qualifier 3 Unknown	M 1 ID 1/1
Must Use	NM108	66 Identification Code Qualifier <i>Parties should mutually agree to use the Interest Owner's proprietary entity code when the D-U-N-S® Number is not available.</i> 1 D-U-N-S Number, Dun & Bradstreet <i>For NAESB WGQ, this code value may only be used when sending the Interest Owner.</i> SV Service Provider Number <i>For NAESB WGQ, this code value may only be used when sending the Interest Owner Proprietary Code.</i>	X 1 ID 1/2
Must Use	NM109	67 Identification Code <i>Interest Owner/Interest Owner Proprietary Code</i>	X 1 AN 2/17

The data element maximum length indicated is reduced from that which is specified in the ASC X12 standards.

Segment: **TDS** Total Monetary Value Summary
Position: 0100
Loop:
Level: Summary
Usage: Mandatory
Max Use: 1

Data Element Summary

	<u>Ref.</u>	<u>Data</u>	<u>Name</u>	<u>Attributes</u>
	<u>Des.</u>	<u>Element</u>		
Must Use	TDS01	610	Amount	M 1 N2 1/15
			<i>For NAESB WGQ, send zero.</i>	

Segment: **SE** Transaction Set Trailer
Position: 1200
Loop:
Level: Summary
Usage: Mandatory
Max Use: 1

Data Element Summary

	<u>Ref.</u>	<u>Data</u>		<u>Attributes</u>
	<u>Des.</u>	<u>Element</u>	<u>Name</u>	
Must Use	SE01	96	Number of Included Segments	M 1 N0 1/10
Must Use	SE02	329	Transaction Set Control Number	M 1 AN 4/9

TRANSACTION SET TABLES

DTM Segments (Heading)

Element Name (DTM06)	Usage	DTM01	DTM05
Imbalance Period	M	582	CM
Statement Date/Time	M	102	DT



811 Consolidated Service Invoice/Statement

Functional Group ID=**CI**

Heading:

	<u>Pos. No.</u>	<u>Seg. ID</u>	<u>Name</u>	<u>Req. Des.</u>	<u>Max.Use</u>	<u>Loop Repeat</u>
Must Use	0100	ST	Transaction Set Header	M	1	
Must Use	0200	BIG	Beginning Segment for Invoice	M	1	
Must Use	0500	REF	Reference Information	O	>1	
Must Use	0800	DTM	Date/Time Reference	O	10	
LOOP ID - N1						>1
Must Use	1000	N1	Party Identification	O	1	
Must Use	1500	PER	Administrative Communications Contact	O	3	

Detail:

	<u>Pos. No.</u>	<u>Seg. ID</u>	<u>Name</u>	<u>Req. Des.</u>	<u>Max.Use</u>	<u>Loop Repeat</u>
LOOP ID - HL						>1
Must Use	0100	HL	Hierarchical Level (Location level loop)	M	1	
LOOP ID - IT1						1
Must Use	2100	IT1	Baseline Item Data (Invoice)	O	1	
	2350	MEA	Measurements	O	1	
LOOP ID - QTY						1
Must Use	2900	QTY	Quantity Information	O	1	
LOOP ID - NM1						1
Must Use	3400	NM1	Individual or Organizational Name	O	1	
Must Use	3890	LCD	Place/Location Description	O	1	
LOOP ID - HL						>1
Must Use	7600	HL	Hierarchical Level (Transportation Service Provider level loop)	O	1	
LOOP ID - IT1						1
Must Use	7700	IT1	Baseline Item Data (Invoice)	O	1	
LOOP ID - QTY						1
Must Use	7800	QTY	Quantity Information	O	1	
LOOP ID - NM1						1
Must Use	7900	NM1	Individual or Organizational Name	O	1	
LOOP ID - HL						>1
Must Use	8000	HL	Hierarchical Level (Interest Owner Quantities level loop)	O	1	
LOOP ID - IT1						999999
Must Use	8100	IT1	Baseline Item Data (Invoice)	O	1	

NAESB WGQ Producer Imbalance Statement

Recommendation Attachment R96056

Must Use	8200	MEA	Measurements	O	1	
			LOOP ID - QTY			>1
Must Use	8300	QTY	Quantity Information	O	1	
			LOOP ID - NM1			1
Must Use	8400	NM1	Individual or Organizational Name	O	1	
			LOOP ID - HL			>1
Must Use	8500	HL	Hierarchical Level (Interest Owner Cumulative Quantities level loop)	O	1	
			LOOP ID - IT1			1
Must Use	8600	IT1	Baseline Item Data (Invoice)	O	1	
			LOOP ID - QTY			>1
Must Use	8700	QTY	Quantity Information	O	1	
			LOOP ID - NM1			1
Must Use	8800	NM1	Individual or Organizational Name	O	1	

Summary:

	<u>Pos. No.</u>	<u>Seg. ID</u>	<u>Name</u>	<u>Req. Des.</u>	<u>Max.Use</u>	<u>Loop Repeat</u>
Must Use	0100	TDS	Total Monetary Value Summary	M	1	
Must Use	1200	SE	Transaction Set Trailer	M	1	

Segment: **ST** Transaction Set Header
Position: 0100
Loop:
Level: Heading
Usage: Mandatory
Max Use: 1

Data Element Summary

	<u>Ref.</u>	<u>Data</u>	<u>Name</u>	<u>Attributes</u>
	<u>Des.</u>	<u>Element</u>		
Must Use	ST01	143	Transaction Set Identifier Code	M 1 ID 3/3
			811 Consolidated Service Invoice/Statement	
Must Use	ST02	329	Transaction Set Control Number	M 1 AN 4/9

Segment: **BIG** Beginning Segment for Invoice
 Position: 0200
 Loop:
 Level: Heading
 Usage: Mandatory
 Max Use: 1

Data Element Summary

	<u>Ref.</u>	<u>Data</u>	<u>Name</u>	<u>Attributes</u>
	<u>Des.</u>	<u>Element</u>		
Must Use	BIG01	373	Date <i>The date the statement was generated.</i>	M 1 DT 8/8
Must Use	BIG02	76	Invoice Number <i>The statement number assigned by the statement preparer.</i>	M 1 AN 1/22
Must Use	BIG07	640	Transaction Type Code F7 Producer Imbalance	O 1 ID 2/2

Segment: **REF** Reference Information
Position: 0500
Loop:
Level: Heading
Usage: Optional (Must Use)
Max Use: >1
Notes: *For NAESB WGQ, this segment is mandatory.*

Data Element Summary

	Ref.	Data		Attributes
	Des.	Element	Name	
Must Use	REF01	128	Reference Identification Qualifier	M 1 ID 2/3
			V0 Version	
Must Use	REF02	127	Reference Identification	X 1 AN 1/50
			<i>Statement Basis</i>	
			A Actual	
			E Estimate	
			R Revision	

Segment: **DTM** Date/Time Reference
Position: 0800
Loop:
Level: Heading
Usage: Optional (Must Use)
Max Use: 10
Notes: For NAESB WGQ, this segment is mandatory and should occur once for each value in the DTM01 element.

Data Element Summary

	Ref.	Data	Name	Attributes
	Des.	Element		
Must Use	DTM01	374	Date/Time Qualifier <i>Refer to "DTM Segments (Heading)" table for usage and values.</i>	M 1 ID 3/3
Must Use	DTM05	1250	Date Time Period Format Qualifier <i>Refer to "DTM Segments (Heading)" table for usage and values.</i>	X 1 ID 2/3
			CM Date in Format CCYYMM	
			DT Date and Time Expressed in Format CCYYMMDDHHMM	
Must Use	DTM06	1251	Date Time Period <i>Refer to "DTM Segments (Heading)" table for usage and values.</i>	X 1 AN 1/35
			<i>Imbalance Period, Statement Date/Time</i>	

Segment: **N1 Party Identification**
Position: 1000
Loop: N1 Optional (Must Use)
Level: Heading
Usage: Optional (Must Use)
Max Use: 1
Notes: *For NAESB WGQ, this segment is mandatory and should occur once for each value in the N101 element.*

Data Element Summary

	<u>Ref. Des.</u>	<u>Data Element</u>	<u>Name</u>	<u>Attributes</u>
Must Use	N101	98	Entity Identifier Code 40 Receiver <i>Statement Recipient ID</i> 41 Submitter <i>Preparer ID</i>	M 1 ID 2/3
Must Use	N103	66	Identification Code Qualifier <i>Parties should mutually agree to use the Transportation Service Provider's proprietary entity code when the D-U-N-S® Number is not available.</i> 1 D-U-N-S Number, Dun & Bradstreet <i>For NAESB WGQ, this code value may only be used when sending the Statement Recipient ID or Preparer ID.</i> SV Service Provider Number <i>For NAESB WGQ, this code value may only be used when sending the Statement Recipient ID Proprietary Code or Preparer ID Proprietary Code.</i>	X 1 ID 1/2
Must Use	N104	67	Identification Code <i>Statement Recipient ID/Statement Recipient ID Proprietary Code, Preparer ID/Preparer ID Proprietary Code</i> <i>The data element maximum length indicated is reduced from that which is specified in the ASC X12 standards.</i>	X 1 AN 2/17

Segment: **PER Administrative Communications Contact**

Position: 1500

Loop: N1 Optional (Must Use)

Level: Heading

Usage: Optional (Must Use)

Max Use: 3

Notes: *For NAESB WGQ, this segment is mandatory. It may only be sent with the Preparer ID N1 loop (N101 = '41').*

Data Element Summary

	<u>Ref.</u>	<u>Data</u>	<u>Attributes</u>
	<u>Des.</u>	<u>Element Name</u>	
Must Use	PER01	366 Contact Function Code IC Information Contact	M 1 ID 2/2
Must Use	PER02	93 Name <i>Preparer Contact Name</i>	O 1 AN 1/35
		<i>The data element maximum length indicated is reduced from that which is specified in the ASC X12 standards.</i>	
Must Use	PER03	365 Communication Number Qualifier TE Telephone	X 1 ID 2/2
Must Use	PER04	364 Communication Number <i>Preparer Contact Phone Number</i>	X 1 AN 1/80
		<i>The data element maximum length indicated is reduced from that which is specified in the ASC X12 standards.</i>	
	PER05	365 Communication Number Qualifier FX Facsimile	X 1 ID 2/2
	PER06	364 Communication Number <i>Preparer Contact Fax Number</i>	X 1 AN 1/80
		<i>For NAESB WGQ, this element is sender's option.</i>	
		<i>The data element maximum length indicated is reduced from that which is specified in the ASC X12 standards.</i>	
	PER07	365 Communication Number Qualifier EM Electronic Mail	X 1 ID 2/2
	PER08	364 Communication Number <i>Preparer Contact E-mail Address</i>	X 1 AN 1/80
		<i>For NAESB WGQ, this element is sender's option.</i>	
		<i>The data element maximum length indicated is reduced from that which is specified in the ASC X12 standards.</i>	

Segment: **HL** Hierarchical Level (Location level loop)
Position: 0100
Loop: HL Mandatory
Level: Detail
Usage: Mandatory
Max Use: 1
Notes: *Location level loop*

Data Element Summary

	<u>Ref.</u>	<u>Data</u>	<u>Attributes</u>
	<u>Des.</u>	<u>Element</u> <u>Name</u>	
Must Use	HL01	628 Hierarchical ID Number <i>sequential line item number</i>	M 1 AN 1/12
Must Use	HL03	735 Hierarchical Level Code 34 Location Record <i>Location level loop</i>	M 1 ID 1/2

Segment: **IT1** **Baseline Item Data (Invoice)**
Position: 2100
Loop: IT1 Optional (Must Use)
Level: Detail
Usage: Optional (Must Use)
Max Use: 1
Notes: *For NAESB WGQ, this segment is mandatory.*

Data Element Summary

	<u>Ref.</u>	<u>Data</u>		<u>Attributes</u>
	<u>Des.</u>	<u>Element</u>	<u>Name</u>	
Must Use	IT101	350	Assigned Identification	O 1 AN 1/20

Segment: **MEA** Measurements
Position: 2350
Loop: IT1 Optional (Must Use)
Level: Detail
Usage: Optional
Max Use: 1
Notes: *For NAESB WGQ, this segment is conditional.*

Data Element Summary

	<u>Ref.</u>	<u>Data</u>	<u>Attributes</u>
	<u>Des.</u>	<u>Element</u> <u>Name</u>	
Must Use	MEA02	738 Measurement Qualifier PU Pressure Base	O 1 ID 1/3
Must Use	MEA03	739 Measurement Value <i>Reporting Pressure Base</i>	X 1 R 1/20
Must Use	MEA04	C001 Composite Unit of Measure	X 1
Must Use	C00101	355 Unit or Basis for Measurement Code <i>Unit of Measure</i> 64 Pounds Per Square Inch Gauge 80 Pounds Per Square Inch Absolute KQ Kilopascal	M ID 2/2

Segment: **QTY** **Quantity Information**
Position: 2900
Loop: QTY Optional (Must Use)
Level: Detail
Usage: Optional (Must Use)
Max Use: 1
Notes: *For NAESB WGQ, this segment is mandatory.*

Data Element Summary

	Ref.	Data		Attributes
	Des.	Element	Name	
Must Use	QTY01	673	Quantity Qualifier	M 1 ID 2/2
			TO Total	
Must Use	QTY02	380	Quantity	X 1 R 1/15
			<i>Grand Total Production Deliveries</i>	
Must Use	QTY03	C001	Composite Unit of Measure	O 1
Must Use	C00101	355	Unit or Basis for Measurement Code	M ID 2/2
			<i>Unit of Measure</i>	
			BZ Million BTU's	
			G8 Gigacalories	
			GV Gigajoules	
			TZ Thousand Cubic Feet	

Segment: **NM1 Individual or Organizational Name**
Position: 3400
Loop: NM1 Optional (Must Use)
Level: Detail
Usage: Optional (Must Use)
Max Use: 1
Notes: *For NAESB WGQ, this segment is mandatory.*

Data Element Summary

	<u>Ref.</u>	<u>Data</u>	<u>Element</u>	<u>Name</u>	<u>Attributes</u>		
Must Use	NM101	98	Entity Identifier Code		M	1	ID 2/3
			OP	Operator of property or unit			
Must Use	NM102	1065	Entity Type Qualifier		M	1	ID 1/1
			3	Unknown			
Must Use	NM108	66	Identification Code Qualifier		X	1	ID 1/2
				<i>Parties should mutually agree to use the Transportation Service Provider's proprietary entity code when the D-U-N-S® Number is not available.</i>			
			1	D-U-N-S Number, Dun & Bradstreet <i>For NAESB WGQ, this code value may only be used when sending the Location Operator.</i>			
			SV	Service Provider Number <i>For NAESB WGQ, this code value may only be used when sending the Location Operator Proprietary Code.</i>			
Must Use	NM109	67	Identification Code		X	1	AN 2/17
				<i>Location Operator/Location Operator Proprietary Code</i>			

The data element maximum length indicated is reduced from that which is specified in the ASC X12 standards.

Segment: **LCD** **Place/Location Description**
Position: 3890
Loop: NM1 Optional (Must Use)
Level: Detail
Usage: Optional (Must Use)
Max Use: 1
Notes: *For NAESB WGQ, this segment is mandatory.*

Data Element Summary

	<u>Ref.</u>	<u>Data</u>	<u>Name</u>	<u>Attributes</u>
	<u>Des.</u>	<u>Element</u>		
Must Use	LCD02	98	Entity Identifier Code LCN Gas Nomination Location	O 1 ID 2/3
Must Use	LCD05	66	Identification Code Qualifier <i>When a Transportation Service Provider's proprietary location code is employed pursuant to this standard, the parties agree that nominations, confirmations, scheduled quantities, and capacity release documents employing such code should be for one gas day at a time, and used only until there is a verified common code for the point associated with the proprietary location code. This would include daily nominations over a weekend. Within two months following the availability of the location the parties should employ the common code and no longer employ the proprietary code for identifying such location in the datasets related to the identified standards.</i> DR Gas Industry Standards Board (GISB) Data Reference Number (DRN) <i>For NAESB WGQ, this code value may only be used when sending the Location.</i> SV Service Provider Number <i>For NAESB WGQ, this code value may only be used when sending the Location Proprietary Code.</i>	X 1 ID 1/2
Must Use	LCD06	67	Identification Code Location/Location Proprietary Code <i>The data element maximum length indicated is reduced from that which is specified in the ASC X12 standards.</i>	X 1 AN 2/17

Segment: **HL** Hierarchical Level (Transportation Service Provider level loop)
Position: 7600
Loop: HL Optional (Must Use)
Level: Detail
Usage: Optional (Must Use)
Max Use: 1
Notes: For NAESB WGQ, this segment is mandatory.

Data Element Summary

	Ref.	Data	Attributes
	Des.	Element Name	
Must Use	HL01	628 Hierarchical ID Number <i>sequential line item number</i>	M 1 AN 1/12
Must Use	HL02	734 Hierarchical Parent ID Number <i>This element contains the sequential line item number (HL01) of the Location level loop (HL03 = '34') to which this detail loop is subordinate.</i>	O 1 AN 1/12
Must Use	HL03	735 Hierarchical Level Code 19 Provider of Service <i>Transportation Service Provider level loop</i>	M 1 ID 1/2

Segment: **IT1** **Baseline Item Data (Invoice)**
Position: 7700
Loop: IT1 Optional (Must Use)
Level: Detail
Usage: Optional (Must Use)
Max Use: 1
Notes: *For NAESB WGQ, this segment is mandatory.*

Data Element Summary

	<u>Ref.</u>	<u>Data</u>		<u>Attributes</u>
	<u>Des.</u>	<u>Element</u>	<u>Name</u>	
Must Use	IT101	350	Assigned Identification	O 1 AN 1/20

Segment: **QTY** **Quantity Information**
Position: 7800
Loop: QTY Optional (Must Use)
Level: Detail
Usage: Optional (Must Use)
Max Use: 1
Notes: *For NAESB WGQ, this segment is mandatory.*

Data Element Summary

	<u>Ref.</u>	<u>Data</u>	<u>Name</u>	<u>Attributes</u>
	<u>Des.</u>	<u>Element</u>		
Must Use	QTY01	673	Quantity Qualifier	M 1 ID 2/2
			TT Total Production Volume	
Must Use	QTY02	380	Quantity	X 1 R 1/15
			<i>Total Production Deliveries</i>	

Segment: **NM1** Individual or Organizational Name
Position: 7900
Loop: NM1 Optional (Must Use)
Level: Detail
Usage: Optional (Must Use)
Max Use: 1
Notes: For NAESB WGQ, this segment is mandatory.

Data Element Summary

	Ref.	Data	Data Element Summary		
			<u>Des.</u>	<u>Element</u>	<u>Name</u>
Must Use	NM101	98	Entity Identifier Code		M 1 ID 2/3
			SJ Service Provider		
Must Use	NM102	1065	Entity Type Qualifier		M 1 ID 1/1
			3 Unknown		
Must Use	NM108	66	Identification Code Qualifier		X 1 ID 1/2
			<i>Parties should mutually agree to use the Transportation Service Provider's proprietary entity code when the D-U-N-S® Number is not available.</i>		
			1 D-U-N-S Number, Dun & Bradstreet		
			<i>For NAESB WGQ, this code value may only be used when sending the Transportation Service Provider.</i>		
			SV Service Provider Number		
			<i>For NAESB WGQ, this code value may only be used when sending the Transportation Service Provider Proprietary Code.</i>		
Must Use	NM109	67	Identification Code		X 1 AN 2/17
			<i>Transportation Service Provider/Transportation Service Provider Proprietary Code</i>		

The data element maximum length indicated is reduced from that which is specified in the ASC X12 standards.

Segment: **HL** Hierarchical Level (Interest Owner Quantities level loop)
Position: 8000
Loop: HL Optional (Must Use)
Level: Detail
Usage: Optional (Must Use)
Max Use: 1
Notes: For NAESB WGQ, this segment is mandatory.

Data Element Summary

	Ref.	Data		Attributes
	Des.	Element	Name	
Must Use	HL01	628	Hierarchical ID Number <i>sequential line item number</i>	M 1 AN 1/12
Must Use	HL02	734	Hierarchical Parent ID Number <i>This element contains the sequential line item number (HL01) of the Transportation Service Provider level loop (HL03 = '19') to which this detail loop is subordinate.</i>	O 1 AN 1/12
Must Use	HL03	735	Hierarchical Level Code PP Related Parties <i>Interest Owner Quantities level loop</i>	M 1 ID 1/2

Segment: **IT1** **Baseline Item Data (Invoice)**
Position: 8100
Loop: IT1 Optional (Must Use)
Level: Detail
Usage: Optional (Must Use)
Max Use: 1
Notes: *For NAESB WGQ, this segment is mandatory.*

Data Element Summary

	<u>Ref.</u>	<u>Data</u>		<u>Attributes</u>
	<u>Des.</u>	<u>Element</u>	<u>Name</u>	
Must Use	IT101	350	Assigned Identification	O 1 AN 1/20

Segment: **MEA** Measurements
Position: 8200
Loop: IT1 Optional (Must Use)
Level: Detail
Usage: Optional (Must Use)
Max Use: 1
Notes: *For NAESB WGQ, this segment is mandatory.*

Data Element Summary

	<u>Ref.</u>	<u>Data</u>	<u>Attributes</u>
	<u>Des.</u>	<u>Element</u> <u>Name</u>	
Must Use	MEA02	738 Measurement Qualifier OX Ownership Share	O 1 ID 1/3
Must Use	MEA03	739 Measurement Value <i>Interest Owner Percentage</i>	X 1 R 1/20

Segment: **QTY** **Quantity Information**
Position: 8300
Loop: QTY Optional (Must Use)
Level: Detail
Usage: Optional (Must Use)
Max Use: 1
Notes: *For NAESB WGQ, this segment is mandatory and should occur once for each value in the QTY01 element.*

Data Element Summary

Ref.	Data			Attributes
<u>Des.</u>	<u>Element</u>	<u>Name</u>		
Must Use	QTY01	673	Quantity Qualifier	M 1 ID 2/2
		B9	Period Beginning Imbalance Quantity <i>Beginning Imbalance Quantity</i>	
		BP	Period Ending Imbalance Quantity <i>Ending Imbalance Quantity</i>	
		BX	Current Period Imbalance Quantity <i>Imbalance Quantity</i>	
		BY	Production Delivery Quantity <i>Production Delivery</i>	
		BZ	Entitlement Quantity <i>Entitlement Quantity</i>	
Must Use	QTY02	380	Quantity <i>Beginning Imbalance Quantity, Ending Imbalance Quantity, Imbalance Quantity, Production Delivery, Entitlement Quantity</i>	X 1 R 1/15

Segment: **NM1 Individual or Organizational Name**
Position: 8400
Loop: NM1 Optional (Must Use)
Level: Detail
Usage: Optional (Must Use)
Max Use: 1
Notes: *For NAESB WGQ, this segment is mandatory.*

Data Element Summary

	<u>Ref.</u>	<u>Data</u>	<u>Name</u>	<u>Attributes</u>
	<u>Des.</u>	<u>Element</u>		
Must Use	NM101	98	Entity Identifier Code	M 1 ID 2/3
			HA Owner	
Must Use	NM102	1065	Entity Type Qualifier	M 1 ID 1/1
			3 Unknown	
Must Use	NM108	66	Identification Code Qualifier	X 1 ID 1/2
			<i>Parties should mutually agree to use the Interest Owner's proprietary entity code when the D-U-N-S® Number is not available.</i>	
			1 D-U-N-S Number, Dun & Bradstreet	
			<i>For NAESB WGQ, this code value may only be used when sending the Interest Owner.</i>	
			SV Service Provider Number	
			<i>For NAESB WGQ, this code value may only be used when sending the Interest Owner Proprietary Code.</i>	
Must Use	NM109	67	Identification Code	X 1 AN 2/17
			<i>Interest Owner/Interest Owner Proprietary Code</i>	

The data element maximum length indicated is reduced from that which is specified in the ASC X12 standards.

Segment: **HL** Hierarchical Level (Interest Owner Cumulative Quantities level loop)
Position: 8500
Loop: HL Optional (Must Use)
Level: Detail
Usage: Optional (Must Use)
Max Use: 1
Notes: For NAESB WGQ, this segment is mandatory.

Data Element Summary

	Ref.	Data	Attributes
	<u>Des.</u>	<u>Element</u> <u>Name</u>	
Must Use	HL01	628 Hierarchical ID Number <i>sequential line item number</i>	M 1 AN 1/12
Must Use	HL02	734 Hierarchical Parent ID Number <i>This element contains the sequential line item number (HL01) of the Location level loop (HL03 = '34') to which this detail loop is subordinate.</i>	O 1 AN 1/12
Must Use	HL03	735 Hierarchical Level Code R Quantity <i>Interest Owner Cumulative Quantities level loop</i>	M 1 ID 1/2
Must Use	HL04	736 Hierarchical Child Code 0 No Subordinate HL Segment in This Hierarchical Structure.	O 1 ID 1/1

Segment: **IT1** **Baseline Item Data (Invoice)**
Position: 8600
Loop: IT1 Optional (Must Use)
Level: Detail
Usage: Optional (Must Use)
Max Use: 1
Notes: *For NAESB WGQ, this segment is mandatory.*

Data Element Summary

	<u>Ref.</u>	<u>Data</u>		<u>Attributes</u>
	<u>Des.</u>	<u>Element</u>	<u>Name</u>	
Must Use	IT101	350	Assigned Identification	O 1 AN 1/20

Segment: **QTY** **Quantity Information**
Position: 8700
Loop: QTY Optional (Must Use)
Level: Detail
Usage: Optional (Must Use)
Max Use: 1
Notes: *For NAESB WGQ, this segment is mandatory and should occur once for each value in the QTY01 element.*

Data Element Summary

Ref.	Data				<u>Attributes</u>
<u>Des.</u>	<u>Element</u>	<u>Name</u>			
Must Use	QTY01	673	Quantity Qualifier		M 1 ID 2/2
			BS	Cumulative Beginning Imbalance Quantity <i>Cumulative Beginning Imbalance Quantity</i>	
			BT	Cumulative Current Period Imbalance Quantity <i>Cumulative Imbalance Quantity</i>	
			BU	Cumulative Prior Period Adjustment <i>Cumulative Prior Period Adjustment</i>	
			BV	Cumulative Ending Imbalance Quantity <i>Cumulative Ending Imbalance Quantity</i>	
Must Use	QTY02	380	Quantity		X 1 R 1/15
				<i>Cumulative Beginning Imbalance Quantity, Cumulative Imbalance Quantity, Cumulative Prior Period Adjustment, Cumulative Ending Imbalance Quantity</i>	

Segment: **NM1 Individual or Organizational Name**
Position: 8800
Loop: NM1 Optional (Must Use)
Level: Detail
Usage: Optional (Must Use)
Max Use: 1
Notes: *For NAESB WGQ, this segment is mandatory.*

Data Element Summary

	Ref.	Data	Attributes
	Des.	Element Name	
Must Use	NM101	98 Entity Identifier Code HA Owner	M 1 ID 2/3
Must Use	NM102	1065 Entity Type Qualifier 3 Unknown	M 1 ID 1/1
Must Use	NM108	66 Identification Code Qualifier <i>Parties should mutually agree to use the Interest Owner's proprietary entity code when the D-U-N-S® Number is not available.</i> 1 D-U-N-S Number, Dun & Bradstreet <i>For NAESB WGQ, this code value may only be used when sending the Interest Owner.</i> SV Service Provider Number <i>For NAESB WGQ, this code value may only be used when sending the Interest Owner Proprietary Code.</i>	X 1 ID 1/2
Must Use	NM109	67 Identification Code <i>Interest Owner/Interest Owner Proprietary Code</i>	X 1 AN 2/17

The data element maximum length indicated is reduced from that which is specified in the ASC X12 standards.

Segment: **TDS** Total Monetary Value Summary
Position: 0100
Loop:
Level: Summary
Usage: Mandatory
Max Use: 1

Data Element Summary

	<u>Ref.</u>	<u>Data</u>	<u>Name</u>	<u>Attributes</u>
	<u>Des.</u>	<u>Element</u>		
Must Use	TDS01	610	Amount	M 1 N2 1/15
			<i>For NAESB WGQ, send zero.</i>	

Segment: **SE** Transaction Set Trailer
Position: 1200
Loop:
Level: Summary
Usage: Mandatory
Max Use: 1

Data Element Summary

	Ref.	Data		Attributes
	Des.	Element	Name	
Must Use	SE01	96	Number of Included Segments	M 1 N0 1/10
Must Use	SE02	329	Transaction Set Control Number	M 1 AN 4/9

NORTH AMERICAN ENERGY STANDARDS BOARD
Executive Committee Meeting – WEQ, REQ, RGQ, WGQ Meeting Materials
August 24-26, 2004

TAB 19

Minor Corrections

- *Minor Corrections*
- *Procedures*

NORTH AMERICAN ENERGY STANDARDS BOARD
Executive Committee Meeting - WEQ, REQ, RGQ, WGQ Meeting Materials
August 24-26, 2004

Minor Corrections

To: NAESB Office, WGQ Executive Committee Chairs
From: Kim Van Pelt, WGQ Technical Subcommittee Chair
Subject: Minor Correction
Date: August 10, 2004

The following minor correction should be made for the Transaction Status Code data element in the Code Values Dictionary of the NAESB WGQ Standard 1.4.2 Nomination Quick Response data set:

Code Values Dictionary

Transaction Status Code

Code Value Description	Code Value Definition	Code Value
Errors or warnings occurred in the Transaction. Transaction has been acknowledged. Errors and warnings follow.	[no definition necessary]	AE <u>EZ</u>
The entire Transaction and all Nominations were accepted.	[no definition necessary]	AF <u>WQ</u>
The entire transaction was rejected due to header level errors.	[no definition necessary]	RD <u>RZ</u>

Note that the EDI implementation is correct.

To: NAESB Office, WGQ Executive Committee Chairs

From: Dale Davis – Williams Gas Pipeline

Subject: Minor Correction – NAESB WGQ Standard 5.4.13 - Operationally Available and Unsubscribed Capacity

Date: August 11, 2004

On July 14, 2004 the Information Requirements Subcommittee was working on Request R99033 and R96018 dealing with NAESB WGQ Standard 5.4.13 - Operationally Available and Unsubscribed Capacity. At that time, it was discovered that in the Code Values Dictionary there is a table of codes for the data element Bidder Affiliate. Bidder Affiliate is not a data element in this data set and never has been, therefore there should not be any code values for it. Upon investigation, the first time this appeared in the implementation guides was with Version 1.5 and it has been erroneously carried through in Versions 1.6 and 1.7. The following research indicates that this was an inadvertent error in the publication of Version 1.5 and not corrected in the subsequent versions.

The Version Notes for Version 1.5 indicate that in addition to other changes to the Capacity Release data sets, code values were added for the data element Bidder Affiliate in NAESB WGQ Standards 5.4.1; 5.4.2; 5.4.3; 5.4.7; 5.4.9; and 5.4.18 as prescribed in the EIITF January 2001 revision. The associated recommendation form that was adopted by the Executive Committee at its February 22, 2001 meeting, as ratified April 1, 2001, indicates the same thing. In neither the recommendation form, the member ratification ballot, nor the version notes, does it indicate that the addition of the data element or code values for Bidder Affiliate are to be added to the Operationally Available and Unsubscribed Capacity. In addition, no modifications have been made to Versions 1.6 or 1.7 that included the addition of the data element Bidder Affiliate and the corresponding code values to this data set.

Therefore, the table of code values for Bidder Affiliate should be removed from the NAESB WGQ Standard 5.4.13 - Operationally Available and Unsubscribed Capacity.

**Minor Corrections
Revealed through Compilation of Version 1.7 user manuals**

1. R97058B Missing footnote reference

Dictionary changes for 2.4.2 - Pre-determined Allocation

Recommendation says:

Business Name	Definition	Data Group	EBB Usage	EDI/FF Usage	Condition
Service Requester Data	Identifies the party requesting the service.	TSDG			
Service Requester ID * (Svc Req)		TSDG	C	C	Based upon the usage as defined by the PDA transaction type. See PDA Transaction Type Matrix below.

Recommendation should read:

Business Name	Definition	Data Group	EBB Usage	EDI/FF Usage	Condition
Service Requester Data	Identifies the party requesting the service.	TSDG			
Service Requester ID * ⁴ (Svc Req)		TSDG	C	C	Based upon the usage as defined by the PDA transaction type. See PDA Transaction Type Matrix below.

2. R97058B Superfluous footnote reference

Dictionary changes for 2.4.8 – Response to Request for Information

Recommendation says:

| **RELEVANT FOOTNOTES:**

* Indicates Common Code

** When a Transportation Service Provider's proprietary location code is employed pursuant to this standard, the parties agree that nominations, confirmations, scheduled quantities, and capacity release documents employing such code should be for one gas day at a time, and used only until there is a verified common code for the point associated with the proprietary location code. This would include daily nominations over a weekend. Within two months following the availability of the location the parties should employ the common code and no longer employ the proprietary code for identifying such location in the datasets related to the identified standards.

| ⁴ [Refer to NAESB Standard No. \[S4 – from R97058B\]](#)

Recommendation should read:

| **RELEVANT FOOTNOTES:**

* Indicates Common Code

| ⁴ [Refer to NAESB Standard No. \[S4 – from R97058B\]](#)

3. R97058B Typo in recommendation

PDA Transaction type Matrix for 2.4.2 - Pre-determined Allocation – usage C11:

Recommendation says:

C11 Mandatory when Upstream Identified Code is not present.

Recommendation should read:

| C11 Mandatory when Upstream ~~Identified~~ Identifier Code is not present.

4. R97058B Data Elements referenced should not be included in dataset

Dictionary Changes for 2.4.11

Recommendation says:

Business Name	Definition	Data Group	EBB Usage	EDI/FF Usage	Condition
Service Requester Data	Identifies the party requesting the service, or their agent.	CDG			
Service Requester * 4 (Svc Req)		CDG	M	M	
Service Requester Name (Svc Req Name)		CDG	M	nu	
Service Requester Proprietary Code (Svc Req Prop)		CDG	C	C	Mandatory when Service Requester is not present.

Recommendation should read:

This data element does not exist for this dataset.

5. R97058B Superfluous footnote reference

Dictionary Changes for 3.4.3 – Statement of Account

Recommendation says:

RELEVANT FOOTNOTES:

* Indicates Common Code

** When a Transportation Service Provider's proprietary location code is employed pursuant to this standard, the parties agree that nomination, confirmations, scheduled quantities, and capacity release documents employing such code should be for one gas day at a time, and used only until there is a verified common code for the point associated with the proprietary location code. This would include daily nominations over a weekend. Within two months following the availability of the location the parties should employ the common code and no longer employ the proprietary code for identifying such location in the data sets related to the identified standards.

⁴ [Refer to NAESB Standard No. \[S4 – from R97058B\]](#)

Recommendation should read:

RELEVANT FOOTNOTES:

* Indicates Common Code

⁴ [Refer to NAESB Standard No. \[S4 – from R97058B\]](#)

6. R97058B Data Elements referenced for change is different than reference

Dictionary Changes for 3.4.4 – Service Requester/Charge Allowance Invoice

Recommendation says:

Business Name	Definition	Data Group	EDI/FF Usage	Condition
Service Requester Data	Identifies the party requesting the service, or their agent.	BEDG	MA	
Service Requester * 4 (Svc Req)		BEDG	MA	
Service Requester Proprietary Code (Svc Req Prop)		BEDG	MA	

Recommendation should read:

Business Name	Definition	Data Group	EDI/FF Usage	Condition
Service Requester Data	Identifies the party requesting the service, or their agent.	BEDG	M	
Service Requester * 4 (Svc Req)		BEDG	MA	
Service Requester Proprietary Code (Svc Req Prop)		BEDG	MA	

7. R97058B Superfluous footnote reference

Dictionary Changes for 3.4.4 – Service Requester/Charge Allowance Invoice

Recommendation says:

| **RELEVANT FOOTNOTES:**

* Indicates Common Code

** When a Transportation Service Provider's proprietary location code is employed pursuant to this standard, the parties agree that nomination, confirmations, scheduled quantities, and capacity release documents employing such code should be for one gas day at a time, and used only until there is a verified common code for the point associated with the proprietary location code. This would include daily nominations over a weekend. Within two months following the availability of the location the parties should employ the common code and no longer employ the proprietary code for identifying such location in the data sets related to the identified standards.

| ⁴ [Refer to NAESB Standard No. \[S4 – from R97058B\]](#)

Recommendation should read:

| **RELEVANT FOOTNOTES:**

* Indicates Common Code

| ⁴ [Refer to NAESB Standard No. \[S4 – from R97058B\]](#)

8. R97058B Data Element Usage column should be left blank

Dictionary Changes for 5.4.20 – Transactional Reporting – Capacity Release

Recommendation says:

Business Name	Definition	Data Group	EBB Usage	EDI/FF Usage	Condition
Contract Holder Proprietary Code (K Holder Prop)		BEDG	C	C	Mandatory when Contract Holder is not present and one of the following conditions is met: <ul style="list-style-type: none"> Contract Status is 'New', or Contract Status is 'Amended' and Amendment Reporting is 'All Data'.
Releaser Company Proprietary Code (Releaser Prop)		BEDG	C	C	Mandatory when Releaser Company Code is not present and one of the following conditions is met: <ul style="list-style-type: none"> Contract Status is 'New', or Contract Status is 'Amended' and Amendment Reporting is 'All Data'.
Transportation Service Provider Proprietary Code (TSP Prop)		TSPDG	C	C	Mandatory when Transportation Service Provider is not present.

Recommendation should read:

Business Name	Definition	Data Group	EBB Usage	EDI/FF Usage	Condition
Contract Holder Proprietary Code (K Holder Prop)		BEDG	C		Mandatory when Contract Holder is not present and one of the following conditions is met: <ul style="list-style-type: none"> • Contract Status is 'New', or • Contract Status is 'Amended' and Amendment Reporting is 'All Data'.
Releaser Company Proprietary Code (Releaser Prop)		BEDG	C		Mandatory when Releaser Company Code is not present and one of the following conditions is met: <ul style="list-style-type: none"> • Contract Status is 'New', or • Contract Status is 'Amended' and Amendment Reporting is 'All Data'.
Transportation Service Provider Proprietary Code (TSP Prop)		TSPDG	C		Mandatory when Transportation Service Provider is not present.

9. R97058B Data Element Usage column should be left blank

Dictionary Changes for 5.3.21 – Transactional Reporting – Firm Transportation

Recommendation says:

Business Name	Definition	Data Group	EBB Usage	EDI/FF Usage	Condition
Contract Holder Proprietary Code (K Holder Prop)		BEDG	C	C	Mandatory when Contract Holder is not present and one of the following conditions is met: <ul style="list-style-type: none"> Contract Status is 'New', or Contract Status is 'Amended' and Amendment Reporting is 'All Data'.
Transportation Service Provider Proprietary Code (TSP Prop)		TSPDG	C	C	Mandatory when Transportation Service Provider is not present.

Recommendation should read:

Business Name	Definition	Data Group	EBB Usage	EDI/FF Usage	Condition
Contract Holder Proprietary Code (K Holder Prop)		BEDG	C		Mandatory when Contract Holder is not present and one of the following conditions is met: <ul style="list-style-type: none"> Contract Status is 'New', or Contract Status is 'Amended' and Amendment Reporting is 'All Data'.
Transportation Service Provider Proprietary Code (TSP Prop)		TSPDG	C		Mandatory when Transportation Service Provider is not present.

10. R97058B Data Element Usage column should be left blank

Dictionary Changes for 5.3.22 – Transactional Reporting – Interruptible Transportation

Recommendation says:

Business Name	Definition	Data Group	EBB Usage	EDI/FF Usage	Condition
Contract Holder Proprietary Code (K Holder Prop)		BEDG	C	C	Mandatory when Contract Holder is not present and one of the following conditions is met: <ul style="list-style-type: none"> Contract Status is 'New', or Contract Status is 'Amended' and Amendment Reporting is 'All Data'.
Transportation Service Provider Proprietary Code (TSP Prop)		TSPDG	C	C	Mandatory when Transportation Service Provider is not present.

Recommendation should read:

Business Name	Definition	Data Group	EBB Usage	EDI/FF Usage	Condition
Contract Holder Proprietary Code (K Holder Prop)		BEDG	C		Mandatory when Contract Holder is not present and one of the following conditions is met: <ul style="list-style-type: none"> Contract Status is 'New', or Contract Status is 'Amended' and Amendment Reporting is 'All Data'.
Transportation Service Provider Proprietary Code (TSP Prop)		TSPDG	C		Mandatory when Transportation Service Provider is not present.

11. R97058B Typo in recommendation

Dictionary Changes for 3.4.2 – Payment Remittance

Recommendation says:

Payment Remittance (3.4.2)
X12 Mapping
Heading N1 segment (position 0700): N104: Replace data element list in the element note with “Remitting Party/Remitting Party Proprietary Code, Payee/Payee Proprietary Code, Remit to Party/Remit to Party Proprietary”.

Recommendation should read:

Payment Remittance (3.4.2)
X12 Mapping
Heading N1 segment (position 0700): N104: Replace data element list in the element note with “Remitting Party/Remitting Party Proprietary Code, Payee/Payee Proprietary Code, Remit to Party/Remit to Party Proprietary Code ”.

12. R97058B Typo in recommendation

Dictionary Changes for 3.4.2 – Payment Remittance

Recommendation says:

Payment Remittance (3.4.2)
X12 Mapping
Detail ENT segment (position 0100): ENT03: code value 1: Add code value note “For NAESB WGQ, this code value may only be used when sending the “Billable Party (Payer).”

Recommendation should read:

Payment Remittance (3.4.2)
X12 Mapping
Detail ENT segment (position 0100): ENT03: code value 1: Add code value note “For NAESB WGQ, this code value may only be used when sending the “Billable Party (Payer).”

(remove opening quotation mark in mid sentence)

13. R97058B Typo in recommendation

Dictionary Changes for 3.4.3 – Statement of Account

Recommendation says:

Statement of Account (3.4.3)
X12 Mapping
Detail ENT segment (position 0100): ENT03: code value 1: Add code value note “For NAESB WGQ, this code value may only be used when sending the “Billable Party (Payer).”

Recommendation should read:

Statement of Account (3.4.3)
X12 Mapping
Detail ENT segment (position 0100): ENT03: code value 1: Add code value note “For NAESB WGQ, this code value may only be used when sending the “Billable Party (Payer).”

(remove opening quotation mark in mid sentence)

14. R98011/R98012 Incorrect Reference to GISB, not NAESB (this recommendation was written in 1999)

New & Modified Standards for Flowing Gas

Recommendation says:

2.1.A (new standard 2.1.6)

The Transportation Service Provider (TSP) should provide allocations to a Service Requester (SR) at the nomination detail level either in the Allocation (GISB Standard 2.4.3) or the Shipper Imbalance (GISB Standard 2.4.4). The sending of the Allocation or the Shipper Imbalance to the SR would be dependent upon the TSP's business practices. In either case, the level of detail would only be to the package ID level where mutually agreed between the TSP and the SR.

2.3.A.1 (new standard 2.3.54)

At a location, the total quantity measured or estimated for the period should be used to provide allocations to parties' scheduled transactions (or otherwise identified transactions consistent with GISB Standard No. 2.3.F).

Modify Standard 2.3.21

The timing for reporting daily operational allocations after the gas has flowed is within one business day after the end of gas day. If the best available data for reporting daily operational allocations is the scheduled quantity, that quantity should be used for the daily operational allocation.

This standard applies to the daily provision of operational allocated quantities whether they are provided pursuant to GISB standard 2.4.3 or GISB standard 2.4.4.

Upon request to its Transportation Service Provider (TSP), a Service Requester (SR) should be provided operational allocated quantities pursuant to Standard 2.4.3 or 2.4.4 for the transaction(s) which have been scheduled by such TSP for the SR.

A TSP can agree to send the operational allocated quantities on a daily basis to a SR rather than accept the Upload of Request for Download for operational allocated quantities.

A TSP is not required to support requests for operational allocated quantities other than on an "all locations for a SR basis." Where a TSP has determined to support this standard in a manner other than:

- a) providing specific operational allocated quantities in response to a request for same, or
- b) providing operational allocated quantities on an "all locations for an SR basis," then the SR can rely on the absence of a line item(s) provided by a TSP as indicative that the particular line item(s)' scheduled quantities are operational allocated quantities.

Recommendation should read:

2.1.A (new standard number 2.1.6)

The Transportation Service Provider (TSP) should provide allocations to a Service Requester (SR) at the nomination detail level either in the Allocation ([GISB NAESB WGQ](#) Standard 2.4.3) or the Shipper Imbalance ([GISB-NAESB WGQ](#) Standard 2.4.4). The sending of the Allocation or the Shipper Imbalance to the SR

would be dependent upon the TSP's business practices. In either case, the level of detail would only be to the package ID level where mutually agreed between the TSP and the SR.

2.3.A.1

At a location, the total quantity measured or estimated for the period should be used to provide allocations to parties' scheduled transactions (or otherwise identified transactions consistent with [GISB-NAESB WGQ Standard No. 2.3.F](#)).

Modify Standard 2.3.21

The timing for reporting daily operational allocations after the gas has flowed is- within one business day after the end of gas day. If the best available data for reporting daily operational allocations is the scheduled quantity, that quantity should be used for the daily operational allocation.

This standard applies to the daily provision of operational allocated quantities whether they are provided pursuant to [GISB-NAESB WGQ standard 2.4.3](#) or [GISB NAESB WGQ standard 2.4.4](#).

Upon request to its Transportation Service Provider (TSP), a Service Requester (SR) should be provided operational allocated quantities pursuant to [NAESB WGQ Standard 2.4.3](#) or [2.4.4](#) for the transaction(s) which have been scheduled by such TSP for the SR.

A TSP can agree to send the operational allocated quantities on a daily basis to a SR rather than accept the ~~Upload of Request for Download~~[Request for Information](#) for operational allocated quantities.

A TSP is not required to support requests for operational allocated quantities other than on an "all locations for a SR basis." Where a TSP has determined to support this standard in a manner other than:

- a) providing specific operational allocated quantities in response to a request for same, or
- b) providing operational allocated quantities on an "all locations for an SR basis," then the SR can rely on the absence of a line item(s) provided by a TSP as indicative that the particular line item(s)' scheduled quantities are operational allocated quantities.

Note: When the recommendation was written, the expectation was that the Capacity Release – Upload of Request for Download dataset would be used to meet the requirements of 2.3.21. Once processed through IR and Technical, it was determined that the Capacity Release dataset did not meet the needs and a new dataset – Standard 2.4.7 - Request for Information – was created.

15. R98011/R98012 Typo in text

New Standards for Flowing Gas

Recommendation says:

2.3.B.1.e

At a location which is not covered by an OBA, an Allocating Party should receive Pre-determined Allocations and calculate the allocations for the location and provide these allocations to the appropriate parties for their use.

Recommendation should read:

2.3.B.1.e

At a location which is not covered by an OBA, an Allocating Party should receive Pre-~~determined~~ determined Allocations and calculate the allocations for the location and provide these allocations to the appropriate parties for their use.

16. R99020/R99032/R01001/R02005 Typo in recommendation

Dictionary Changes for 5.4.8 – Offer Upload Quick Response

Recommendation says:

Validation Code (Sub-detail)

Code Value	Code Value Description	Code Value Definition
E538	Invalid Right to Amend Primary Points Indicator	[no definition necessary]
E539	Missing Right to Amend Primary Points Indicator	[no definition necessary]
E540	Missing Right to Amend Primary Points Terms	[no definition necessary]
W823	Right to Amend Primary Points Indicator not used	[no definition necessary]
W824	Right to Amend Primary Points Terms not used	[no definition necessary]

Recommendation should read:

Validation Code (~~Sub-detail~~)(Heading)

Code Value	Code Value Description	Code Value Definition
E538	Invalid Right to Amend Primary Points Indicator	[no definition necessary]
E539	Missing Right to Amend Primary Points Indicator	[no definition necessary]
E540	Missing Right to Amend Primary Points Terms	[no definition necessary]
W823	Right to Amend Primary Points Indicator not used	[no definition necessary]
W824	Right to Amend Primary Points Terms not used	[no definition necessary]

17. R99024 Typo in recommendation

Dictionary Changes for 5.4.11 – Offer Upload Bidder Confirmation Quick Response

Recommendation says:

Standard 5.4.11

Business Name	Definition	Usage	Condition
Bidder Company Data	The unique company code number for the legal entity which is the bidder.		
Bidder Company Code * 4		M	
Bidder Company Proprietary Code		C	Mandatory when Bidder Company Code is not present.

Recommendation should read:

Standard 5.4.11

Business Name	Definition	Usage	Condition
Bidder Company Data	The unique company code number for the legal entity which is the bidder.		
Bidder Company Code * 4		M	
Bidder Company Proprietary Code		C	Mandatory when Bidder Company Code is not present.

18. R99024 Typo in recommendation

Data Dictionary for the following:

- o 5.4.3 Award Download
- o 5.4.4 Replacement Capacity
- o 5.4.7 Offer Upload
- o 5.4.9 Offer Upload Notification
- o 5.4.13 Operationally Available & Unsubscribed Capacity

Recommendation says:

Business Name	Definition	EBB Usage	EDI/FF Usage	Condition
<u>Location Proprietary Code Code (Loc Prop)</u>		<u>C</u>	<u>C</u>	<u>Mandatory when Location is not present. When this field uniquely identifies the segment, a proprietary segment identifier may be used.</u>

Recommendation should read:

Business Name	Definition	EBB Usage	EDI/FF Usage	Condition
<u>Location Proprietary Code Code (Loc Prop)</u>		<u>C</u>	<u>C</u>	<u>Mandatory when Location is not present. When this field uniquely identifies the segment, a proprietary segment identifier may be used.</u>

19. R99024 Typo in recommendation

Data Dictionary for the 5.4.8 Offer Upload Quick Response

Recommendation says:

Business Name	Definition	EDI/FF Usage	Condition
<u>Location Proprietary Code Code</u> (Loc Prop)		C	Mandatory when Location is not present. When this field uniquely identifies the segment, a proprietary segment identifier may be used.

Recommendation should read:

Business Name	Definition	EDI/FF Usage	Condition
<u>Location Proprietary Code</u> Code (Loc Prop)		C	Mandatory when Location is not present. When this field uniquely identifies the segment, a proprietary segment identifier may be used.

20. R99024 Typo in recommendation

Change Log for 5.4.1 – Offer Download

Recommendation says:

Offer Download (5.4.1)
Transaction Set Tables
N1 Segments (Heading) table: For the “Releaser Company Code/Releaser Company Proprietary Code” row, modify the Element Name column to “Releaser/Releaser Proprietary Code”
N1 Segments (Heading) table: For the “Bidder Company Code/Bidder Company Proprietary Code” row, modify the Element Name column to “Bidder/Bidder Proprietary Code”

Recommendation should read:

Offer Download (5.4.1)
Transaction Set Tables
N1 Segments (Heading) table: For the “Releaser Company Code/Releaser Company Proprietary Code” row, modify the Element Name column to “Releaser/Releaser Proprietary Code”
N1 Segments (Heading) table: For the “Releaser Company Code/Releaser Company Proprietary Code” row, modify the Element Name (N102) column to “Releaser Name”
N1 Segments (Heading) table: For the “Bidder Company Code/Bidder Company Proprietary Code” row, modify the Element Name column to “Bidder/Bidder Proprietary Code”
N1 Segments (Heading) table: For the “Bidder Company Code/Bidder Company Proprietary Code” row, modify the Element Name (N102) column to “Bidder Name”

21. R99024 Typo in recommendation

Change Log for 5.4.2 – Award Download

Recommendation says:

Award Download (5.4.2)
Transaction Set Tables
N1 Segments (Heading) table: For the “Releaser Company Code/Releaser Company Proprietary Code” row, modify the Element Name column to “Releaser/Releaser Proprietary Code”

Recommendation should read:

Award Download (5.4.2)
Transaction Set Tables
N1 Segments (Heading) table: For the “Releaser Company Code/Releaser Company Proprietary Code” row, modify the Element Name column to “Releaser/Releaser Proprietary Code”
N1 Segments (Heading) table: For the “Releaser Company Code/Releaser Company Proprietary Code” row, modify the Element Name (N102) column to “Releaser Name”

22. R00016 Typo in recommendation

Change Log for 1.4.3 – Confirmation Response, 1.4.5 – Scheduled Quantity

Recommendation says:

Document Name and No.: Confirmation Response, NAESB WGQ Standard 1.4.3
Scheduled Quantity, NAESB WGQ Standard 1.4.5

Description of Change:
Confirmation Response
Transaction Set Tables
LQ Segments (Detail) table: For the Reduction Reason data element, add the reduction reason codes and their descriptions (in alphabetical order) in the LQ02 and LQ02 Description columns, respectively, as follows: LPI Loop In LPO Loop Out
Scheduled Quantity
Transaction Set Tables
LQ Segments (Sub-detail) table: For the Reduction Reason data element, add the reduction reason codes and their descriptions (in alphabetical order) in the LQ02 and LQ02 Description columns, respectively, as follows: LPI Loop In LPO Loop Out

Recommendation should read:

Document Name and No.: Confirmation Response, NAESB WGQ Standard 1.4.3
Scheduled Quantity, NAESB WGQ Standard 1.4.5

Description of Change:
Confirmation Response
Transaction Set Tables
LQ Segments (Detail) table: For the Reduction Reason data element, add the reduction reason codes and their descriptions (in alphabetical order) in the LQ02 and LQ02 Description columns, respectively, as follows: LPI Loop In LPO Loop Out

LQ Segments (Sub-detail) table: For the Reduction Reason data element, add the reduction reason codes and their descriptions (in alphabetical order) in the LQ02 and LQ02 Description columns, respectively, as follows:

 LPI Loop In
 LPO Loop Out

Scheduled Quantity

Transaction Set Tables

LQ Segments (Sub-detail) table: For the Reduction Reason data element = RED, add the reduction reason codes and their descriptions (in alphabetical order) in the LQ02 and LQ02 Description columns, respectively, as follows:

 LPI Loop In
 LPO Loop Out

LQ Segments (Sub-detail) table: For the Reduction Reason data element = REE, add the reduction reason codes and their descriptions (in alphabetical order) in the LQ02 and LQ02 Description columns, respectively, as follows:

 LPI Loop In
 LPO Loop Out

23. C03004 Incorrect Document Reference

Recommendation says:

C03004 Request from Caminus Regarding the Data Dictionary for:

In the data dictionaries for the Request for Confirmation – NEASB WGQ Standard 1.4.3 (document G85RQCF) and the Confirmation Response – NAESB WGQ Standard G850RQCF) and the Confirmation Response – NEASB WGQ Standard 1.4.4 (document G855RRFC) it is required that an upstream/downstream identifier code be sent depending on the contractual flow indicator. At a pipeline interconnect the usual confirmation process is by upstream/downstream contract identifier. Shouldn't the upstream/downstream identifier code between the two pipelines be a business conditional process? Here is one reason why. At an interconnect there could be several buy/sale transactions. The transport contract may be communicated through the chain but the entity may not due to confidentiality reasons. Please justify your position on this required element.

Proposed Draft Language:

The Mandatory usage of upstream and downstream identifiers (entities) in the confirmation process, specifically as used in the Request for Confirmation – NEASB WGQ Standard 1.4.3 (document G850RQCF) and the Confirmation Response – NEASB WGQ Standard 1.4.4 (document G855RRFC), dates back to GISB version 1.0. In requesting that NAESB “justify” it’s position in requiring these data elements,(the rest remains as in the recommendation)

Recommendation should read:

C03004 Request from Caminus Regarding the Data Dictionary for ~~G855RRFC~~ G873RRFC and ~~G850RQCF~~ G873RQCF:

In the data dictionaries for the Request for Confirmation – NEASB WGQ Standard 1.4.3 (document ~~G850RQCF~~ G873RQCF) and the Confirmation Response – NEASB WGQ Standard 1.4.4 (document ~~G855RRFC~~ G873RRFC),) it is required that an upstream/downstream identifier code be sent depending on the contractual flow indicator. At a pipeline interconnect the usual confirmation process is by upstream/downstream contract identifier. Shouldn't the upstream/downstream identifier code between the two pipelines be a business conditional process? Here is one reason why. At an interconnect there could be several buy/sale transactions. The transport contract may be communicated through the chain but the entity may not due to confidentiality reasons. Please justify your position on this required element.

Proposed Draft Language:

The Mandatory usage of upstream and downstream identifiers (entities) in the confirmation process, specifically as used in the Request for Confirmation – NEASB WGQ Standard 1.4.3 (document [G850RQCF](#)~~G873RQCF~~) and the Confirmation Response – NEASB WGQ Standard 1.4.4 (document [G855RRFC](#)~~G873RRFC~~), dates back to GISB version 1.0. In requesting that NAESB “justify” it’s position in requiring these data elements,(the rest remains as in the recommendation).....

Minor Corrections and Clarifications
 Revealed through Compilation of Version 1.7 implementation into the user manuals

1. R97058B Missing footnote reference

Dictionary changes for 2.4.2 - Pre-determined Allocation

Recommendation says:

<u>Business Name</u>	<u>Definition</u>	<u>Data Group</u>	<u>EBB Usage</u>	<u>EDI/FF Usage</u>	<u>Condition</u>
Service Requester Data	Identifies the party requesting the service.	TSDG			
Service Requester ID * (Svc Req)		TSDG	C	C	Based upon the usage as defined by the PDA transaction type. See PDA Transaction Type Matrix below.

Recommendation should read:

<u>Business Name</u>	<u>Definition</u>	<u>Data Group</u>	<u>EBB Usage</u>	<u>EDI/FF Usage</u>	<u>Condition</u>
Service Requester Data	Identifies the party requesting the service.	TSDG			
Service Requester ID * ⁴ (Svc Req)		TSDG	C	C	Based upon the usage as defined by the PDA transaction type. See PDA Transaction Type Matrix below.

2. R97058B Superfluous footnote reference

Dictionary changes for 2.4.8 – Response to Request for Information

Recommendation says:

RELEVANT FOOTNOTES:

* Indicates Common Code

** When a Transportation Service Provider's proprietary location code is employed pursuant to this standard, the parties agree that nominations, confirmations, scheduled quantities, and capacity release documents employing such code should be for one gas day at a time, and used only until there is a verified common code for the point associated with the proprietary location code. This would include daily nominations over a weekend. Within two months following the availability of the location the parties should employ the common code and no longer employ the proprietary code for identifying such location in the datasets related to the identified standards.

⁴ [Refer to NAESB Standard No. \[S4 – from R97058B\]](#)

Recommendation should read:

RELEVANT FOOTNOTES:

* Indicates Common Code

⁴ [Refer to NAESB Standard No. \[S4 – from R97058B\]](#)

3. R97058B Typo in recommendation

PDA Transaction type Matrix for 2.4.2 - Pre-determined Allocation – usage C11:

Recommendation says:

C11 Mandatory when Upstream Identified Code is not present.

Recommendation should read:

C11 Mandatory when Upstream ~~Identified~~ Identifier Code is not present.

34. R97058B Data Elements referenced should not be included in dataset

Dictionary Changes for 2.4.11

Recommendation says:

<u>Business Name</u>	<u>Definition</u>	<u>Data Group</u>	<u>EBB Usage</u>	<u>EDI/FF Usage</u>	<u>Condition</u>
Contract Holder Data	The entity with the contractual relationship with the transportation service provider.	CTDG			
Contract Holder *⁴ (K Holder)		CDG	M	M	
Contract Holder Name (K Holder Name)		CDG	M	nu	
Contract Holder Proprietary Code (K Holder Prop)		CDG	C	C	Mandatory when Contract Holder is not present.
Service Requester Data	Identifies the party requesting the service, or their agent.	CDG			
Service Requester * ⁴ (Svc Req)		CDG	M	M	
Service Requester Name (Svc Req Name)		CDG	M	nu	
Service Requester Proprietary Code (Svc Req Prop)		CDG	C	C	Mandatory when Service Requester is not present.

Recommendation should read:

~~These Thistwo~~ data elements ~~does~~ not exist for this dataset.

45. R97058B Superfluous footnote reference

Dictionary Changes for 3.4.3 – Statement of Account

Recommendation says:

RELEVANT FOOTNOTES:

* Indicates Common Code

** When a Transportation Service Provider’s proprietary location code is employed pursuant to this standard, the parties agree that nomination, confirmations, scheduled quantities, and capacity release documents employing such code should be for one gas day at a time, and used only until there is a verified common code for the point associated with the proprietary location code. This would include daily nominations over a weekend. Within two months following the availability of the location the parties should employ the common code and no longer employ the proprietary code for identifying such location in the data sets related to the identified standards.

⁴ [Refer to NAESB Standard No. \[S4 – from R97058B\]](#)

Recommendation should read:

RELEVANT FOOTNOTES:

* Indicates Common Code

⁴ [Refer to NAESB Standard No. \[S4 – from R97058B\]](#)

56. R97058B Data Elements referenced for change is different than reference

Dictionary Changes for 3.4.4 – Service Requester/Charge Allowance Invoice

Recommendation says:

<u>Business Name</u>	<u>Definition</u>	<u>Data Group</u>	<u>EDI/FF Usage</u>	<u>Condition</u>
----------------------	-------------------	-------------------	---------------------	------------------

<u>Business Name</u>	<u>Definition</u>	<u>Data Group</u>	<u>EDI/FF Usage</u>	<u>Condition</u>
Service Requester Data	Identifies the party requesting the service, or their agent.	BEDG	MA	
Service Requester * 4 (Svc Req)		BEDG	MA	
Service Requester Proprietary Code (Svc Req Prop)		BEDG	MA	

Recommendation should read:

<u>Business Name</u>	<u>Definition</u>	<u>Data Group</u>	<u>EDI/FF Usage</u>	<u>Condition</u>
Service Requester Data	Identifies the party requesting the service, or their agent.	BEDG	MA	
Service Requester * 4 (Svc Req)		BEDG	MA	
Service Requester Proprietary Code (Svc Req Prop)		BEDG	MA	

67. R97058B Superfluous footnote reference

Dictionary Changes for 3.4.4 – Service Requester/Charge Allowance Invoice

Recommendation says:

RELEVANT FOOTNOTES:

* Indicates Common Code

** When a Transportation Service Provider's proprietary location code is employed pursuant to this standard, the parties agree that nomination, confirmations, scheduled quantities, and capacity release documents employing such code should be for one gas day at a time, and used only until there is a verified common code for the point associated with the proprietary location code. This would include daily nominations over a weekend. Within two months following the availability of the location the parties should employ the common code and no longer employ the proprietary code for identifying such location in the data sets related to the identified standards.

⁴ [Refer to NAESB Standard No. \[S4 – from R97058B\]](#)

Recommendation should read:

RELEVANT FOOTNOTES:

* Indicates Common Code

⁴ [Refer to NAESB Standard No. \[S4 – from R97058B\]](#)

78. R97058B Data Element Usage column should be left blank

Dictionary Changes for 5.34.20 – Transactional Reporting – Capacity Release

Recommendation says:

<u>Business Name</u>	<u>Definition</u>	<u>Data Group</u>	<u>EBB Usage</u>	<u>EDI/FF Usage</u>	<u>Condition</u>
Contract Holder Proprietary Code (K Holder Prop)		BEDG	C	C	Mandatory when Contract Holder is not present and one of the following conditions is met: <ul style="list-style-type: none"> Contract Status is 'New', or Contract Status is 'Amended' and Amendment Reporting is 'All Data'.
Releaser Company Proprietary Code (Releaser Prop)		BEDG	C	C	Mandatory when Releaser Company Code is not present and one of the following conditions is met: <ul style="list-style-type: none"> Contract Status is 'New', or Contract Status is 'Amended' and Amendment Reporting is 'All Data'.

<u>Business Name</u>	<u>Definition</u>	<u>Data Group</u>	<u>EBB Usage</u>	<u>EDI/FF Usage</u>	<u>Condition</u>
Transportation Service Provider Proprietary Code (TSP Prop)		TSPDG	C	C	Mandatory when Transportation Service Provider is not present.

Recommendation should read:

Business Name	Definition	Data Group	EBB Usage	EDI/FF Usage	Condition
Contract Holder Proprietary Code (K Holder Prop)		BEDG	C		Mandatory when Contract Holder is not present and one of the following conditions is met: <ul style="list-style-type: none"> Contract Status is 'New', or Contract Status is 'Amended' and Amendment Reporting is 'All Data'.
Releaser Company Proprietary Code (Releaser Prop)		BEDG	C		Mandatory when Releaser Company Code is not present and one of the following conditions is met: <ul style="list-style-type: none"> Contract Status is 'New', or Contract Status is 'Amended' and Amendment Reporting is 'All Data'.
Transportation Service Provider Proprietary Code (TSP Prop)		TSPDG	C		Mandatory when Transportation Service Provider is not present.

89. R97058B Data Element Usage column should be left blank

Dictionary Changes for 5.3.21 – Transactional Reporting – Firm Transportation

Recommendation says:

<u>Business Name</u>	<u>Definition</u>	<u>Data Group</u>	<u>EBB Usage</u>	<u>EDI/FF Usage</u>	<u>Condition</u>
Contract Holder Proprietary Code (K Holder Prop)		BEDG	C	C	Mandatory when Contract Holder is not present and one of the following conditions is met: <ul style="list-style-type: none"> Contract Status is 'New', or Contract Status is 'Amended' and Amendment Reporting is 'All Data'.
Transportation Service Provider Proprietary Code (TSP Prop)		TSPDG	C	C	Mandatory when Transportation Service Provider is not present.

Recommendation should read:

<u>Business Name</u>	<u>Definition</u>	<u>Data Group</u>	<u>EBB Usage</u>	<u>EDI/FF Usage</u>	<u>Condition</u>
Contract Holder Proprietary Code (K Holder Prop)		BEDG	C		Mandatory when Contract Holder is not present and one of the following conditions is met: <ul style="list-style-type: none"> Contract Status is 'New', or Contract Status is 'Amended' and Amendment Reporting is 'All Data'.
Transportation Service Provider Proprietary Code (TSP Prop)		TSPDG	C		Mandatory when Transportation Service Provider is not present.

910. R97058B Data Element Usage column should be left blank

Dictionary Changes for 5.3.22 – Transactional Reporting – Interruptible Transportation

Recommendation says:

<u>Business Name</u>	<u>Definition</u>	<u>Data Group</u>	<u>EBB Usage</u>	<u>EDI/FF Usage</u>	<u>Condition</u>
Contract Holder Proprietary Code (K Holder Prop)		BEDG	C	C	Mandatory when Contract Holder is not present and one of the following conditions is met: <ul style="list-style-type: none"> Contract Status is 'New', or Contract Status is 'Amended' and Amendment Reporting is 'All Data'.
Transportation Service Provider Proprietary Code (TSP Prop)		TSPDG	C	C	Mandatory when Transportation Service Provider is not present.

Recommendation should read:

<u>Business Name</u>	<u>Definition</u>	<u>Data Group</u>	<u>EBB Usage</u>	<u>EDI/FF Usage</u>	<u>Condition</u>
Contract Holder Proprietary Code (K Holder Prop)		BEDG	C		Mandatory when Contract Holder is not present and one of the following conditions is met: <ul style="list-style-type: none"> Contract Status is 'New', or Contract Status is 'Amended' and Amendment Reporting is 'All Data'.
Transportation Service Provider Proprietary Code (TSP Prop)		TSPDG	C		Mandatory when Transportation Service Provider is not present.

4011. R97058B Typo in recommendation

Dictionary Changes for 3.4.2 – Payment Remittance

Recommendation says:

Payment Remittance (3.4.2)
X12 Mapping
Heading N1 segment (position 0700): N104: Replace data element list in the element note with "Remitting Party/Remitting Party Proprietary Code, Payee/Payee Proprietary Code, Remit to Party/Remit to Party Proprietary".

Recommendation should read:

Payment Remittance (3.4.2)
X12 Mapping
Heading N1 segment (position 0700): N104: Replace data element list in the element note with "Remitting Party/Remitting Party Proprietary Code, Payee/Payee Proprietary Code, Remit to Party/Remit to Party Proprietary Code".

124. R97058B Typo in recommendation

Dictionary Changes for 3.4.2 – Payment Remittance

Recommendation says:

Payment Remittance (3.4.2)
X12 Mapping
Detail ENT segment (position 0100): ENT03: code value 1: Add code value note "For NAESB WGQ, this code value may only be used when sending the "Billable Party (Payer)."

Recommendation should read:

Payment Remittance (3.4.2)
X12 Mapping
Detail ENT segment (position 0100): ENT03: code value 1: Add code value note "For NAESB WGQ, this code value may only be used when sending the "Billable Party (Payer)."

(remove opening quotation mark in mid sentence)

1213. R97058B Typo in recommendation

Dictionary Changes for 3.4.3 – Statement of Account

Recommendation says:

Statement of Account (3.4.3)
X12 Mapping
Detail ENT segment (position 0100): ENT03: code value 1: Add code value note “For NAESB WGQ, this code value may only be used when sending the “Billable Party (Payer).”

Recommendation should read:

Statement of Account (3.4.3)
X12 Mapping
Detail ENT segment (position 0100): ENT03: code value 1: Add code value note “For NAESB WGQ, this code value may only be used when sending the Billable Party (Payer).”

(remove opening quotation mark in mid sentence)

1314. R98011/R98012 Incorrect Reference to GISB, not NAESB (this recommendation was written in 1999)

New & Modified Standards for Flowing Gas

Recommendation says:

2.1.A (new standard 2.1.6)

The Transportation Service Provider (TSP) should provide allocations to a Service Requester (SR) at the nomination detail level either in the Allocation (GISB Standard 2.4.3) or the Shipper Imbalance (GISB Standard 2.4.4). The sending of the Allocation or the Shipper Imbalance to the SR would be dependent upon the TSP’s business practices. In either case, the level of detail would only be to the package ID level where mutually agreed between the TSP and the SR.

2.3.A.1 (new standard 2.3.54)

At a location, the total quantity measured or estimated for the period should be used to provide allocations to parties’ scheduled transactions (or otherwise identified transactions consistent with GISB Standard No. 2.3.F).

Modify Standard 2.3.21

The timing for reporting daily operational allocations after the gas has flowed is within one business day after the end of gas day. If the best available data for reporting daily operational allocations is the scheduled quantity, that quantity should be used for the daily operational allocation.

This standard applies to the daily provision of operational allocated quantities whether they are provided pursuant to GISB standard 2.4.3 or GISB standard 2.4.4.

Upon request to its Transportation Service Provider (TSP), a Service Requester (SR) should be provided operational allocated quantities pursuant to Standard 2.4.3 or 2.4.4 for the transaction(s) which have been scheduled by such TSP for the SR.

A TSP can agree to send the operational allocated quantities on a daily basis to a SR rather than accept the Upload of Request for Download for operational allocated quantities.

A TSP is not required to support requests for operational allocated quantities other than on an "all locations for a SR basis." Where a TSP has determined to support this standard in a manner other than:

- a) providing specific operational allocated quantities in response to a request for same, or
- b) providing operational allocated quantities on an "all locations for an SR basis," then the SR can rely on the absence of a line item(s) provided by a TSP as indicative that the particular line item(s)' scheduled quantities are operational allocated quantities.

Recommendation should read:

2.1.A (new standard number 2.1.6)

The Transportation Service Provider (TSP) should provide allocations to a Service Requester (SR) at the nomination detail level either in the Allocation ([GISB NAESB WGQ Standard 2.4.3](#)) or the Shipper Imbalance ([GISB NAESB WGQ Standard 2.4.4](#)). The sending of the Allocation or the Shipper Imbalance to the SR would be dependent upon the TSP's business practices. In either case, the level of detail would only be to the package ID level where mutually agreed between the TSP and the SR.

2.3.A.1

At a location, the total quantity measured or estimated for the period should be used to provide allocations to parties' scheduled transactions (or otherwise identified transactions consistent with [GISB NAESB WGQ Standard No. 2.3.F](#)).

Modify Standard 2.3.21

The timing for reporting daily operational allocations after the gas has flowed is within one business day after the end of gas day. If the best available data for reporting daily operational allocations is the scheduled quantity, that quantity should be used for the daily operational allocation.

This standard applies to the daily provision of operational allocated quantities whether they are provided pursuant to [GISB NAESB WGQ standard 2.4.3](#) or [GISB NAESB WGQ standard 2.4.4](#).

Upon request to its Transportation Service Provider (TSP), a Service Requester (SR) should be provided operational allocated quantities pursuant to [NAESB WGQ Standard 2.4.3](#) or [2.4.4](#) for the transaction(s) which have been scheduled by such TSP for the SR.

A TSP can agree to send the operational allocated quantities on a daily basis to a SR rather than accept the [Upload of Request for Download Request for Information](#) for operational allocated quantities.

A TSP is not required to support requests for operational allocated quantities other than on an “all locations for a SR basis.” Where a TSP has determined to support this standard in a manner other than:

- a) providing specific operational allocated quantities in response to a request for same, or
- b) providing operational allocated quantities on an “all locations for an SR basis,” then the SR can rely on the absence of a line item(s) provided by a TSP as indicative that the particular line item(s) scheduled quantities are operational allocated quantities.

Note: When the recommendation was written, the expectation was that the Capacity Release – Upload of Request for Download dataset would be used to meet the requirements of 2.3.21. Once processed through IR and Technical, it was determined that the Capacity Release dataset did not meet the needs and a new dataset – Standard 2.4.7 - Request for Information – was created.

1415. R98011/R98012 Typo in text

New Standards for Flowing Gas

Recommendation says:

2.3.B.1.e

At a location which is not covered by an OBA, an Allocating Party should receive Pre-determined Allocations and calculate the allocations for the location and provide these allocations to the appropriate parties for their use.

Recommendation should read:

2.3.B.1.e

At a location which is not covered by an OBA, an Allocating Party should receive Pre-~~determined~~[determined](#) Allocations and calculate the allocations for the location and provide these allocations to the appropriate parties for their use.

1516. R99020/R99032/R01001/R02005 Typo in recommendation

Dictionary Changes for 5.4.8 – Offer Upload Quick Response

Recommendation says:

Validation Code (Sub-detail)

Code Value	Code Value Description	Code Value Definition
E538	Invalid Right to Amend Primary Points Indicator	[no definition necessary]
E539	Missing Right to Amend Primary Points Indicator	[no definition necessary]
E540	Missing Right to Amend Primary Points Terms	[no definition necessary]
W823	Right to Amend Primary Points Indicator not used	[no definition necessary]
W824	Right to Amend Primary Points Terms not used	[no definition necessary]

Recommendation should read:

Validation Code (~~Sub-detail~~)(Heading)

Code Value	Code Value Description	Code Value Definition
E538	Invalid Right to Amend Primary Points Indicator	[no definition necessary]
E539	Missing Right to Amend Primary Points Indicator	[no definition necessary]
E540	Missing Right to Amend Primary Points Terms	[no definition necessary]
W823	Right to Amend Primary Points Indicator not used	[no definition necessary]
W824	Right to Amend Primary Points Terms not used	[no definition necessary]

1617. R99024 Typo in recommendation

Dictionary Changes for 5.4.11 – Offer Upload Bidder Confirmation Quick Response

Recommendation says:

Standard 5.4.11

Business Name	Definition	Usage	Condition
Bidder Company -Data	The unique company code number for the legal entity which is the bidder.		
Bidder Company Code * 4		M	
Bidder Company Proprietary Code		C	Mandatory when Bidder Company Code is not present.

Recommendation should read:

Standard 5.4.11

Business Name	Definition	Usage	Condition
Bidder Company -Data	The unique company code number for the legal entity which is the bidder.		
Bidder Company Code * 4		M	
Bidder Company Proprietary Code		C	Mandatory when Bidder Company Code is not present.

18. R99024 Typo in recommendation

Data Dictionary for the following:

- o 5.4.3 Award Download
- o 5.4.4 Replacement Capacity

- o 5.4.7 Offer Upload
- o 5.4.9 Offer Upload Notification
- o 5.4.13 Operationally Available & Unsubscribed Capacity

Recommendation says:

Business Name	Definition	EBB Usage	EDI/FF Usage	Condition
<u>Location Proprietary Code Code (Loc Prop)</u>		<u>C</u>	<u>C</u>	Mandatory when Location is not present. When this field uniquely identifies the segment, a proprietary segment identifier may be used.

Recommendation should read:

Business Name	Definition	EBB Usage	EDI/FF Usage	Condition
<u>Location Proprietary Cede Code (Loc Prop)</u>		<u>C</u>	<u>C</u>	Mandatory when Location is not present. When this field uniquely identifies the segment, a proprietary segment identifier may be used.

19. R99024 Typo in recommendation

Data Dictionary for the 5.4.8 Offer Upload Quick Response

Recommendation says:

Business Name	Definition	EDI/FF Usage	Condition
<u>Location Proprietary Code Code</u> (Loc Prop)		<u>C</u>	<u>Mandatory when Location is not present. When this field uniquely identifies the segment, a proprietary segment identifier may be used.</u>

Recommendation should read:

Business Name	Definition	EDI/FF Usage	Condition
<u>Location Proprietary Code</u> Code (Loc Prop)		<u>C</u>	<u>Mandatory when Location is not present. When this field uniquely identifies the segment, a proprietary segment identifier may be used.</u>

1720. R99024 Typo in recommendation

Change Log for 5.4.1 – Offer Download

Recommendation says:

Offer Download (5.4.1)
Transaction Set Tables
N1 Segments (Heading) table: For the “Releaser Company Code/Releaser Company Proprietary Code” row, modify the Element Name column to “Releaser/Releaser Proprietary Code”
N1 Segments (Heading) table: For the “Bidder Company Code/Bidder Company Proprietary Code” row, modify the Element Name column to “Bidder/Bidder Proprietary Code”

Recommendation should read:

Offer Download (5.4.1)
Transaction Set Tables
N1 Segments (Heading) table: For the "Releaser Company Code/Releaser Company Proprietary Code" row, modify the Element Name column to "Releaser/Releaser Proprietary Code"
N1 Segments (Heading) table: For the "Releaser Company Code/Releaser Company Proprietary Code" row, modify the Element Name (N102) column to "Releaser Name"
N1 Segments (Heading) table: For the "Bidder Company Code/Bidder Company Proprietary Code" row, modify the Element Name column to "Bidder/Bidder Proprietary Code"
N1 Segments (Heading) table: For the "Bidder Company Code/Bidder Company Proprietary Code" row, modify the Element Name (N102) column to "Bidder Name"

1821. R99024 Typo in recommendation

Change Log for 5.4.2 – Award Download

Recommendation says:

Award Download (5.4.2)
Transaction Set Tables
N1 Segments (Heading) table: For the "Releaser Company Code/Releaser Company Proprietary Code" row, modify the Element Name column to "Releaser/Releaser Proprietary Code"

Recommendation should read:

Award Download (5.4.2)
Transaction Set Tables
N1 Segments (Heading) table: For the "Releaser Company Code/Releaser Company Proprietary Code" row, modify the Element Name column to "Releaser/Releaser Proprietary Code"
N1 Segments (Heading) table: For the "Releaser Company Code/Releaser Company Proprietary Code" row, modify the Element Name (N102) column to "Releaser Name"

1922. R00016 Typo in recommendation

Change Log for 1.4.3 – Confirmation Response, 1.4.5 – Scheduled Quantity

Recommendation says:

Document Name and No.: Confirmation Response, NAESB WGQ Standard 1.4.3
Scheduled Quantity, NAESB WGQ Standard 1.4.5

Description of Change:
Confirmation Response
Transaction Set Tables
LQ Segments (Detail) table: For the Reduction Reason data element, add the reduction reason codes and their descriptions (in alphabetical order) in the LQ02 and LQ02 Description columns, respectively, as follows: LPI Loop In LPO Loop Out
Scheduled Quantity
Transaction Set Tables
LQ Segments (Sub-detail) table: For the Reduction Reason data element, add the reduction reason codes and their descriptions (in alphabetical order) in the LQ02 and LQ02 Description columns, respectively, as follows: LPI Loop In LPO Loop Out

Recommendation should read:

Document Name and No.: Confirmation Response, NAESB WGQ Standard 1.4.3
Scheduled Quantity, NAESB WGQ Standard 1.4.5

Description of Change:
Confirmation Response
Transaction Set Tables
LQ Segments (Detail) table: For the Reduction Reason data element, add the reduction reason codes and their descriptions (in alphabetical order) in the LQ02 and LQ02 Description columns, respectively, as follows: LPI Loop In LPO Loop Out

LQ Segments (Sub-detail) table: For the Reduction Reason data element, add the reduction reason codes and their descriptions (in alphabetical order) in the LQ02 and LQ02 Description columns, respectively, as follows:

LPI Loop In
LPO Loop Out

Scheduled Quantity

Transaction Set Tables

LQ Segments (Sub-detail) table: For the Reduction Reason data element = RED, add the reduction reason codes and their descriptions (in alphabetical order) in the LQ02 and LQ02 Description columns, respectively, as follows:

LPI Loop In
LPO Loop Out

LQ Segments (Sub-detail) table: For the Reduction Reason data element = REE, add the reduction reason codes and their descriptions (in alphabetical order) in the LQ02 and LQ02 Description columns, respectively, as follows:

LPI Loop In
LPO Loop Out

23. C03004 Incorrect Document Reference

Recommendation says:

C03004 Request from Caminus Regarding the Data Dictionary for:

In the data dictionaries for the Request for Confirmation – NEASB WGQ Standard 1.4.3 (document G85RQCF) and the Confirmation Response – NAESB WGQ Standard G850RQCF) and the Confirmation Response – NEASB WGQ Standard. 1.4.4 (document G855RRFC) it is required that an upstream/downstream identifier code be sent depending on the contractual flow indicator. At a pipeline interconnect the usual confirmation process is by upstream/downstream contract identifier. Shouldn't the upstream/downstream identifier code between the two pipelines be a business conditional process? Here is one reason why. At an interconnect there could be several buy/sale transactions. The transport contract may be communicated through the chain but the entity may not due to confidentiality reasons. Please justify your position on this required element.

Proposed Draft Language:

The Mandatory usage of upstream and downstream identifiers (entities) in the confirmation process, specifically as used in the Request for Confirmation – NEASB WGQ Standard 1.4.3 (document G850RQCF) and the Confirmation Response – NEASB WGQ Standard 1.4.4 (document G855RRFC), dates back to GISB version 1.0. In requesting that NAESB “justify” it’s position in requiring these data elements,(the rest remains as in the recommendation)

Recommendation should read:

C03004 Request from Caminus Regarding the Data Dictionary for [G855RRFC-G873RRFC](#) and [G850RQCF-G873RQCF](#):

In the data dictionaries for the Request for Confirmation – NEASB WGQ Standard 1.4.3 (document [G850RQCF-G873RQCF](#)) and the Confirmation Response – NEASB WGQ Standard 1.4.4 (document [G855RRFC-G873RRFC](#)),) it is required that an upstream/downstream identifier code be sent depending on the contractual flow indicator. At a pipeline interconnect the usual confirmation process is by upstream/downstream contract identifier. Shouldn't the upstream/downstream identifier code between the two pipelines be a business conditional process? Here is one reason why. At an interconnect there could be several buy/sale transactions. The transport contract may be communicated through the chain but the entity may not due to confidentiality reasons. Please justify your position on this required element.

Proposed Draft Language:

The Mandatory usage of upstream and downstream identifiers (entities) in the confirmation process, specifically as used in the Request for Confirmation – NEASB WGQ Standard 1.4.3 (document [G850RQCF-G873RQCF](#)) and the Confirmation Response – NEASB WGQ Standard 1.4.4 (document [G855RRFC-G873RRFC](#)), dates back to GISB version 1.0. In requesting that NAESB “justify” it’s position in requiring these data elements,(the rest remains as in the recommendation).....

NORTH AMERICAN ENERGY STANDARDS BOARD
Executive Committee Meeting - WEQ, REQ, RGQ, WGQ Meeting Materials
August 24-26, 2004

Procedures

609

610 D. Minor Clarifications and Corrections to Standards

611 Minor clarifications and corrections to existing standards include: (a)
612 clarifications or corrections made by a regulatory agency to standards that are of
613 a jurisdictional nature, or by the American National Standards Institute or its
614 successor; (b) clarifications or corrections to the format, appearance, or
615 descriptions of standards in standards documentation; (c) clarifications or
616 corrections to add code values to tables; and (d) clarifications and corrections
617 that do not materially change a standard.

618 Any request for a minor clarification or correction to an existing standard
619 should be submitted in writing to the executive director. This request shall
620 include a description of the minor clarification or correction and the reason the
621 clarification or correction should be implemented.

622

623 1. Processing of Requests

624 The executive director shall promptly notify the EC and any appropriate
625 subcommittee(s) of the receipt of the request. The members of the applicable
626 quadrant's EC shall promptly determine whether the request meets the
627 definition of a minor clarification or correction. Through the decision of the vice
628 chair of the applicable quadrant, this determination may be delegated to one of
629 the quadrant's subcommittees, with the concurrence of the subcommittee chair,
630 in which case the subcommittee shall make a prompt decision.

631 If the request is determined to meet the definition of minor clarification or
632 correction, the applicable quadrant's EC, with input from any subcommittee(s)
633 to which the request has been forwarded, shall act on the request within one
634 month of its receipt. A meeting to discuss the request is not required; the
635 decision may be made by notational vote. A simple majority of the votes received
636 shall determine the outcome. The members of the applicable quadrant's EC shall
637 be given at least three working days to consider and vote on the request.

638

639 2. Public Notice

640 The results of the vote on the request for a minor clarification or correction
641 shall be posted on the NAESB website and the members of the applicable
642 quadrant shall be notified of the request by e-mail. If the request has been
643 approved by the applicable quadrant's EC, the notification shall include a brief
644 description of the request, the contact name and number of the requester so
645 that further information can be obtained, and the proposed effective date of the
646 clarification or correction. The proposed effective date of the minor clarification
647 or correction shall normally be one month from the date of the public notice.
648 Any interested party shall have an opportunity to comment on the request, and
649 the comments shall be posted on the NAESB website. The comment period is
650 two weeks.

651

652 3. Final Disposition of Approved Requests

653 If no comments are received on an approved request, the standard shall be
654 clarified or corrected as specified in the approved request on the effective date
655 proposed. If comments are received, they shall be forwarded to the members of
656 the applicable quadrant's EC for consideration. Each comment requires a public

657 written response from the applicable quadrant's EC. The applicable quadrant's
658 EC shall determine whether changes are necessary as a result of the comments.
659 Members of the applicable quadrant's EC shall be given three working days to
660 consider the comments and determine the outcome, which shall be decided by a
661 simple majority of the votes received. A meeting to discuss the request is not
662 required; the decision may be made by notational vote. The standard shall be
663 clarified or corrected in accordance with the outcome of the vote, effective with
664 the completion of voting, and notice thereof shall be posted on the NAESB
665 website.